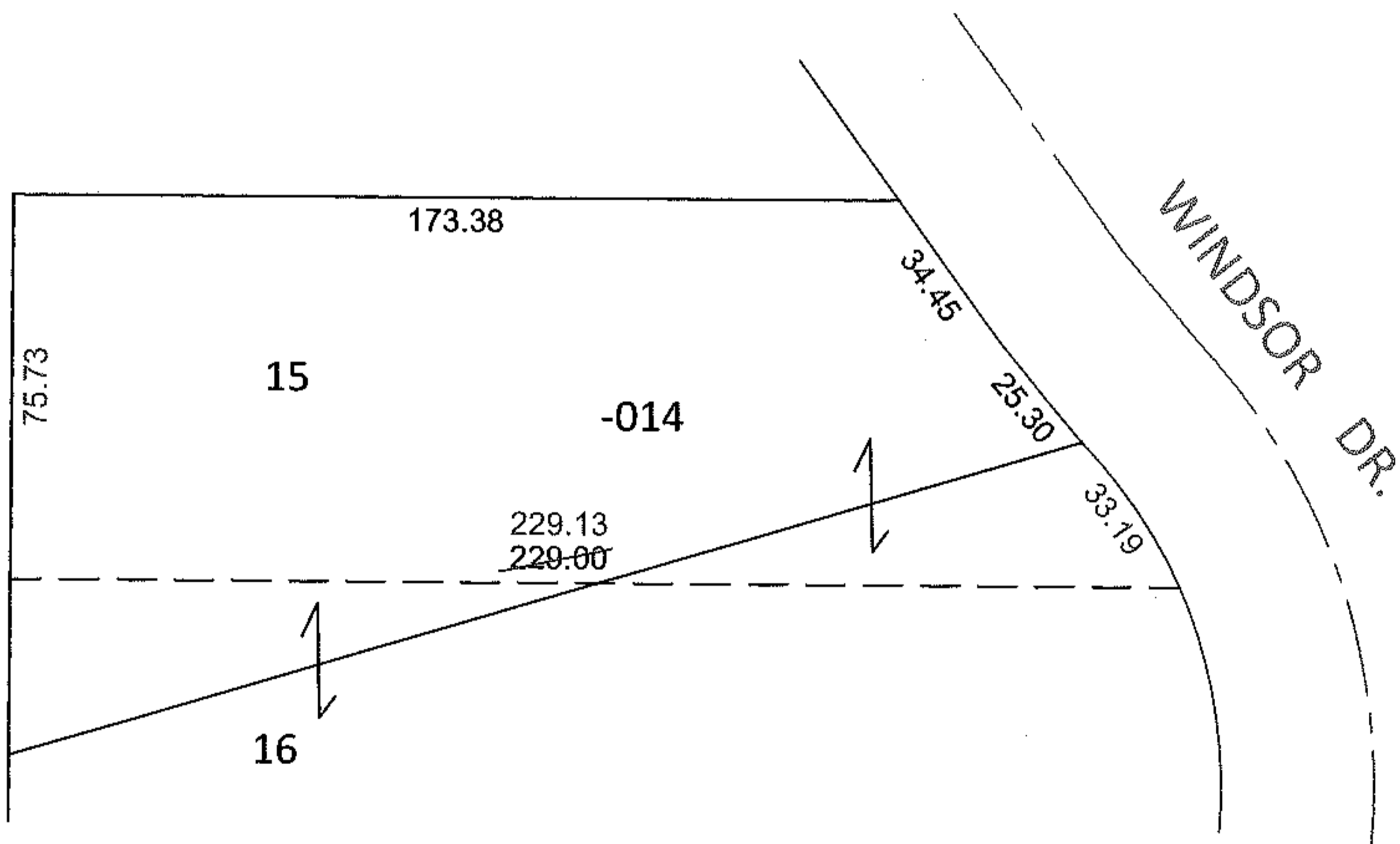
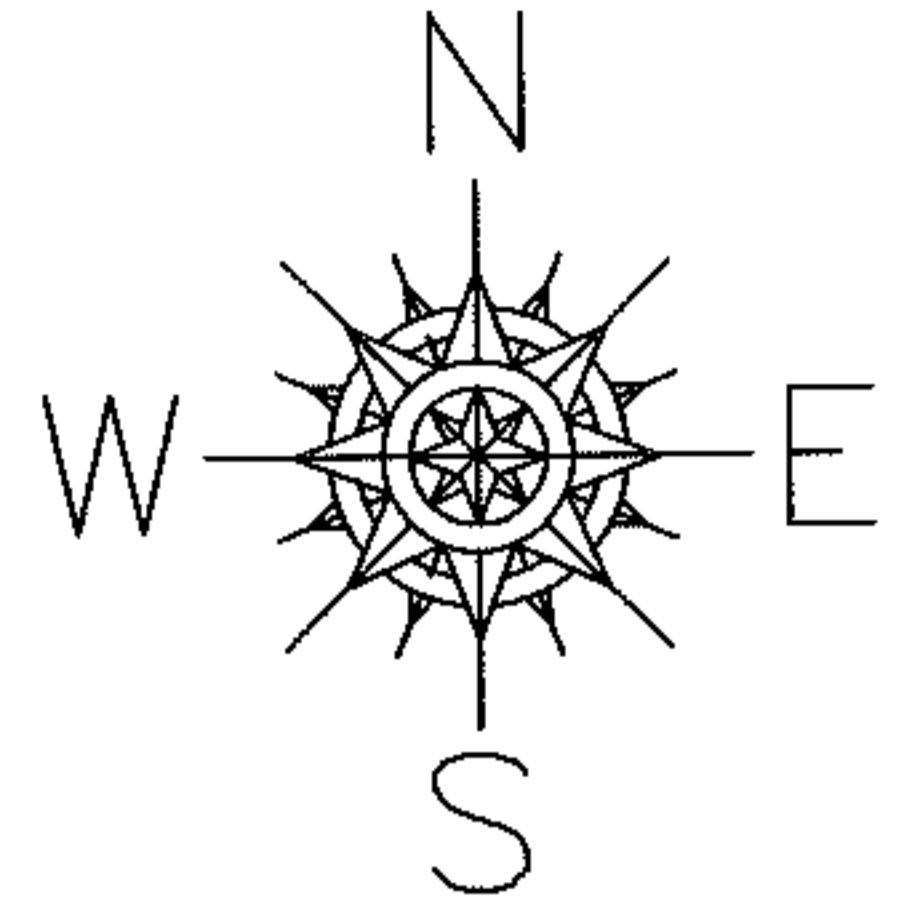


PARENT PARCEL: 06-25-029-102-014

CHILD PARCEL: _____

STARTING POINT: SOUTHEAST CORNER OF S/L 14 IN ROBINDALE PARK SUB. NO.1(VOL.22 PG.73)

10-02153-C



DEPTH CORRECTION

06-25-029-102-014

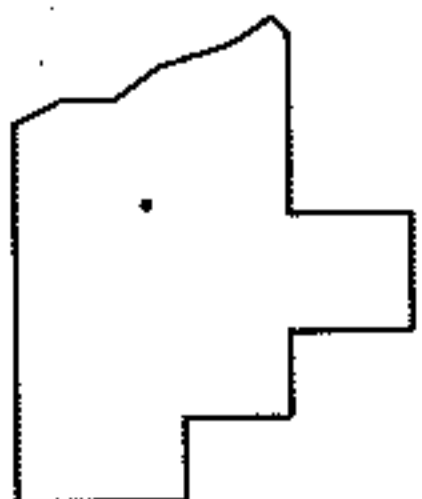
229.13

92.94 X ~~229.00~~

PER PRIOR DEEDS

DV 789/411

20080265173



SPLITS/DEEDS PROCESSED

LORAIN COUNTY TAX MAP DEPARTMENT
226 MIDDLE AVE. ELYRIA, OHIO

SURVEYED BY: N/A

CLOSURE: N/A

MAP PAGE(S): 6-51

APPROVED BY: RRM DATE: 12-13-10

SCALE: 1"= 50' PRIOR INST.: 20080265173