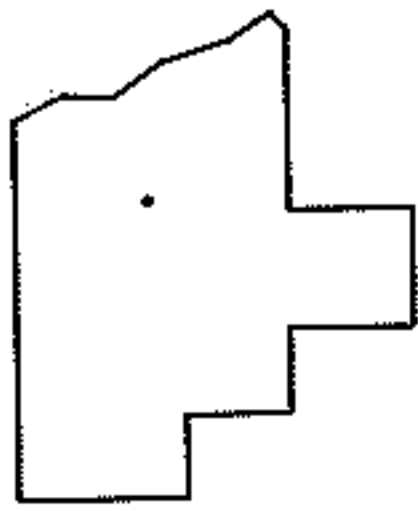
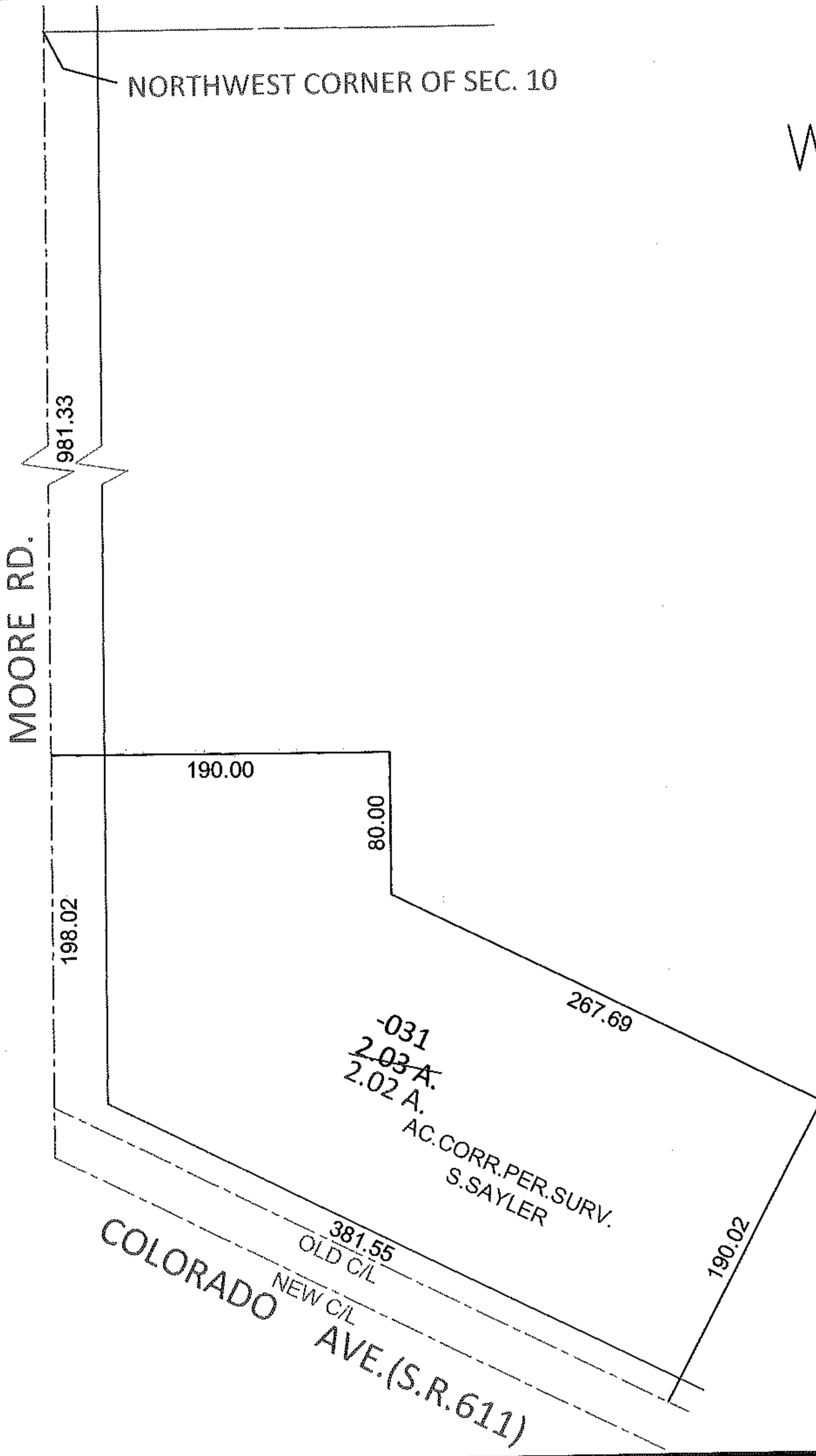
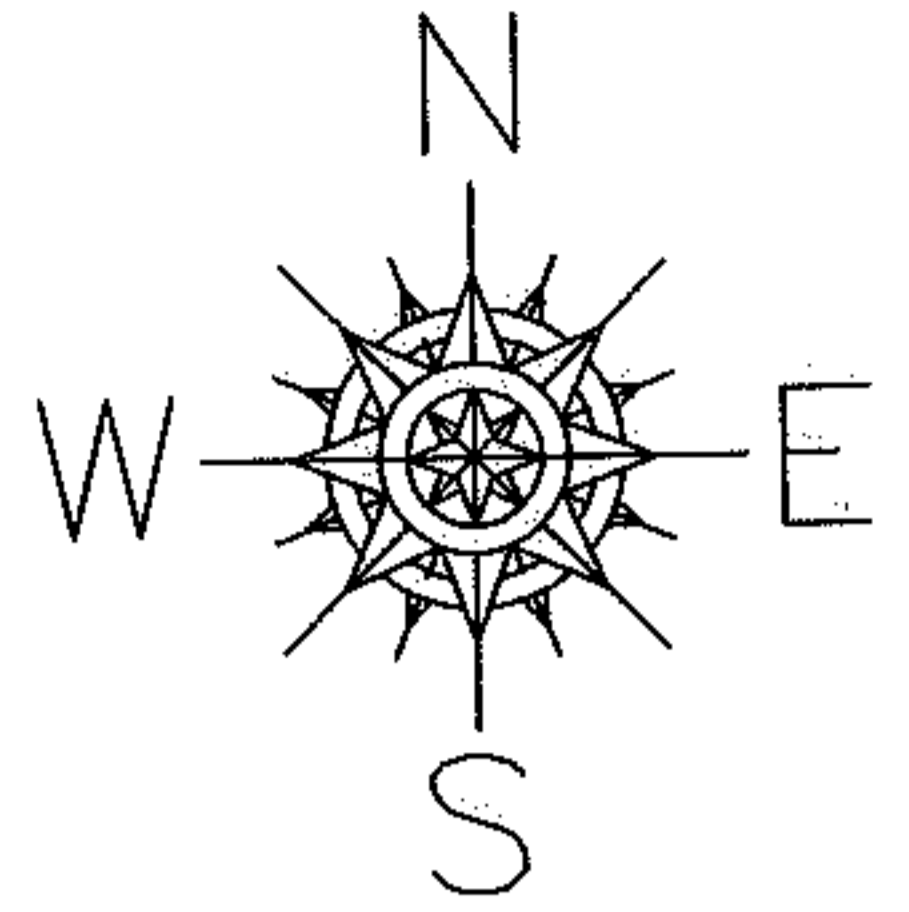


PARENT PARCEL: 04-00-010-101-031

10-02152-D

CHILD PARCEL:

STARTING POINT: NORTHWEST CORNER OF SEC. 10



**SPLITS/DEEDS PROCESSED**

LORAIN COUNTY TAX MAP DEPARTMENT  
226 MIDDLE AVE. ELYRIA, OHIO

SURVEYED BY: STUART W. SAYLER

CLOSURE: .01:10,000

MAP PAGE(S): 4-00-010-A

APPROVED BY: RRM DATE: 12-14-10

SCALE: 1"= 100 PRIOR INST.: 20050051192