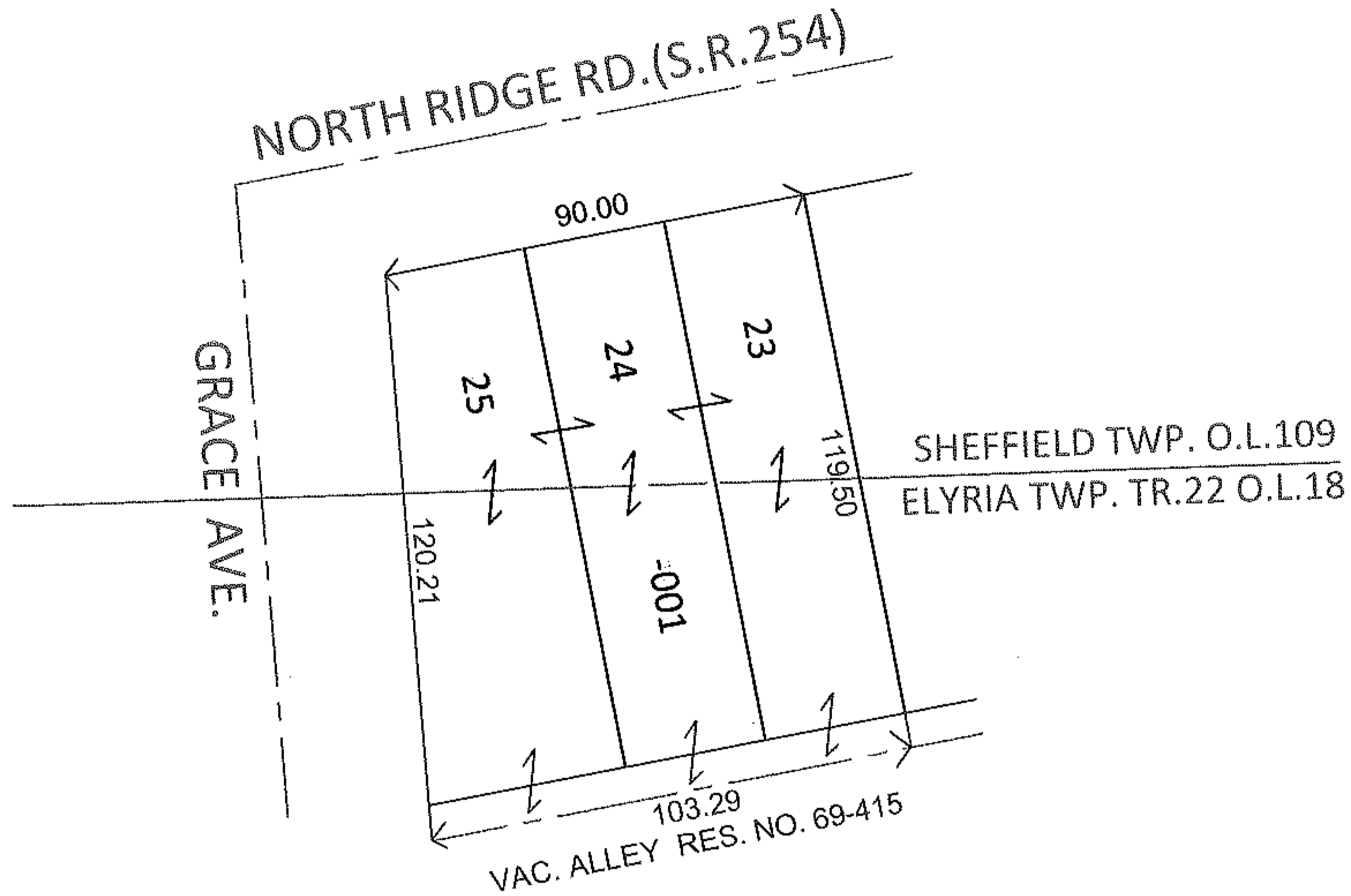
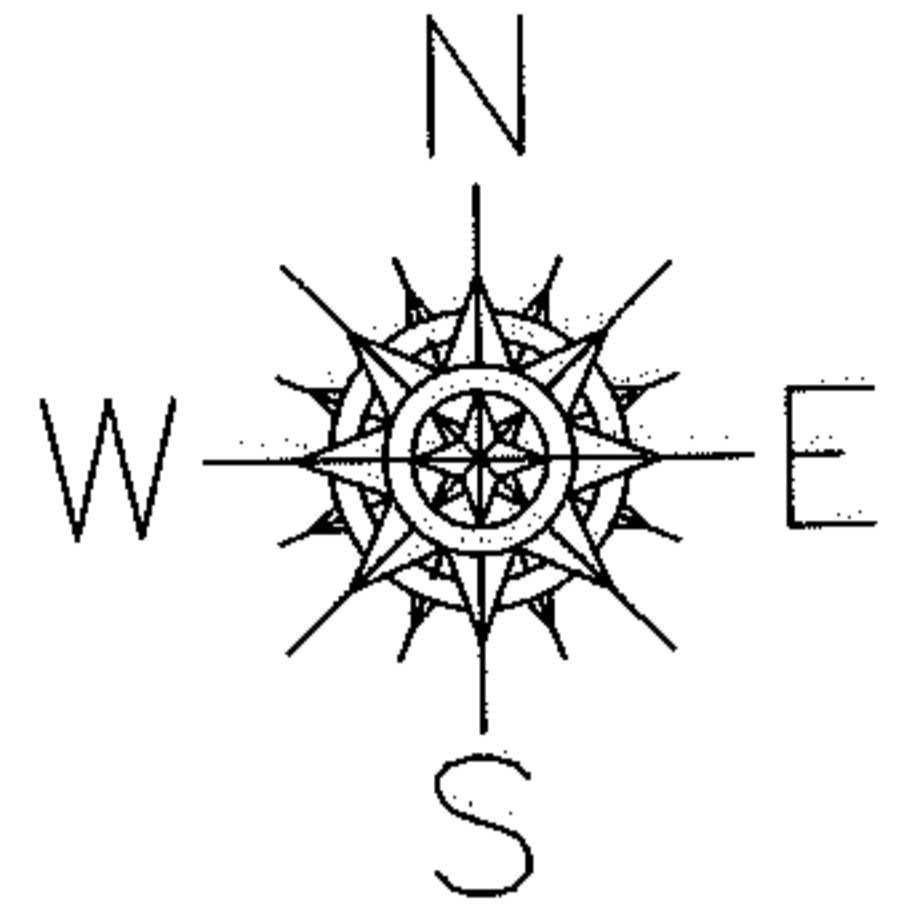


PARENT PARCEL: 03-00-109-109-001

CHILD PARCEL:

STARTING POINT: SUBLOTS 23 THRU 25 IN CLEARVIEW SUB. (VOL.10 PG.8)

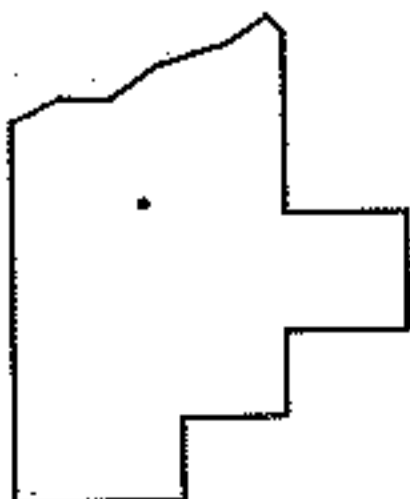
10-02151-D



DEPTH CORRECTION

03-00-109-109-001

120.21 PER DEED
90 X ~~119.50~~



SPLITS/DEEDS PROCESSED

LORAIN COUNTY TAX MAP DEPARTMENT
226 MIDDLE AVE. ELYRIA, OHIO

SURVEYED BY: N/A

CLOSURE: N/A

MAP PAGE(S): 3-00-109-A

APPROVED BY: RRM DATE: 12-14-10

SCALE: 1" = 50' PRIOR INST.: 20000722533