

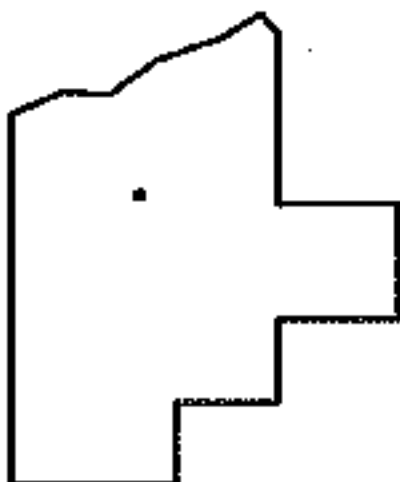
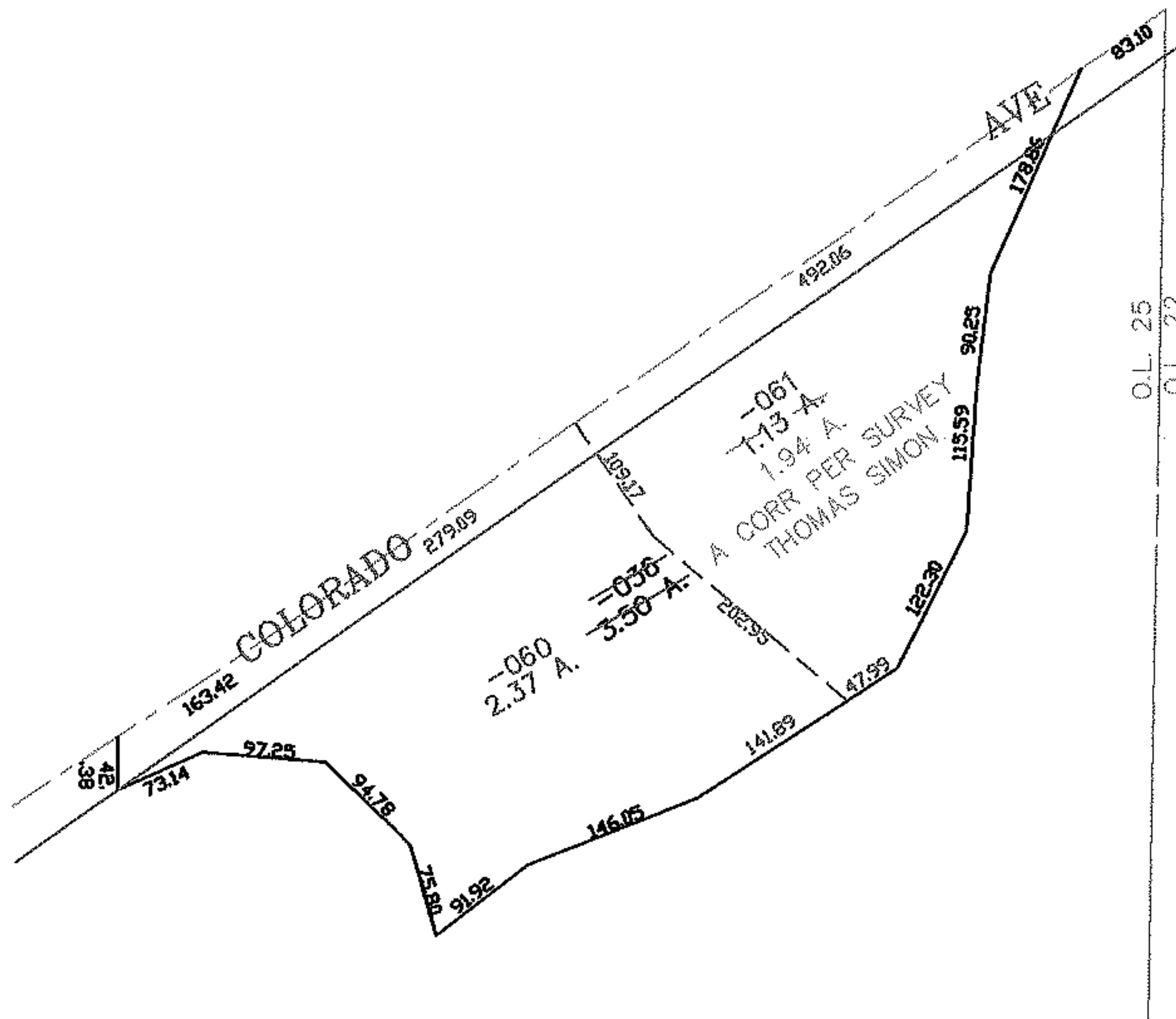
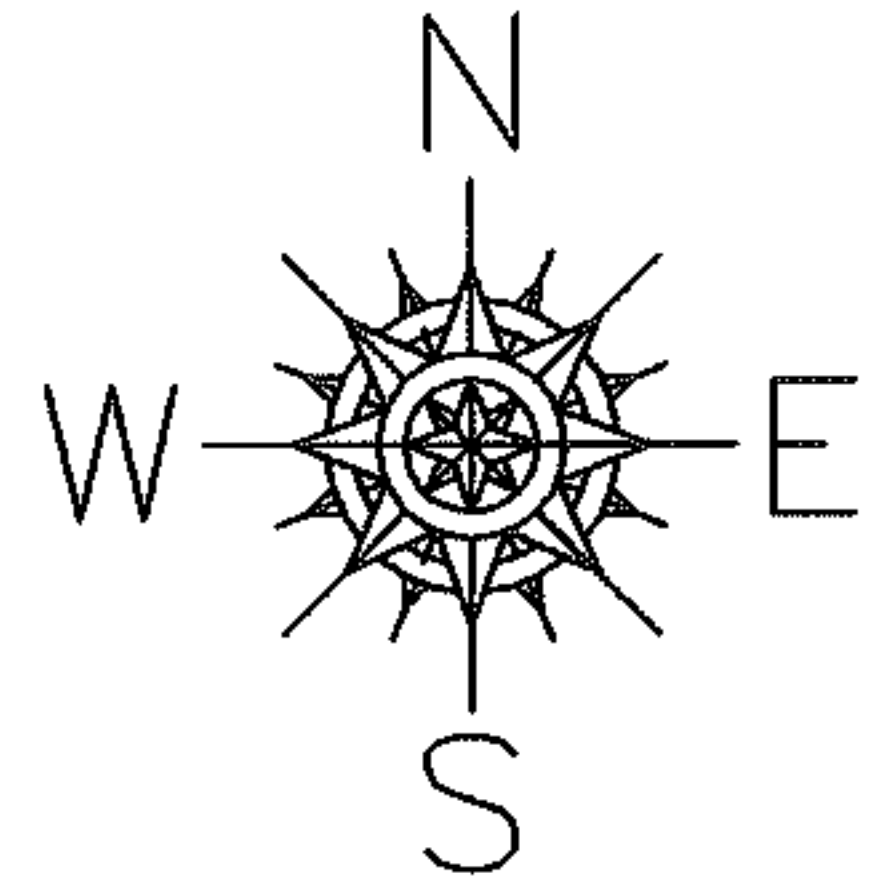
RASTER

PARENT PARCEL: 03-00-025-000-036

CHILD PARCEL: 03-00-025-000-060, -061

STARTING POINT: CENTERLINE O COLORADO AVE & O.L. 25

06-02150



SPLITS/DEEDS PROCESSED
LORAIN COUNTY TAX MAP DEPARTMENT
226 MIDDLE AVE. ELYRIA, OHIO

SURVEYED BY: THOMAS SIMON
CLOSURE: 0.00 ; 10.000
MAP PAGE(S): 03-00-025-A
APPROVED BY: JAH DATE: 5-15-06
SCALE: 1" = 200 PRIOR INSTRUMENT: 20050103170