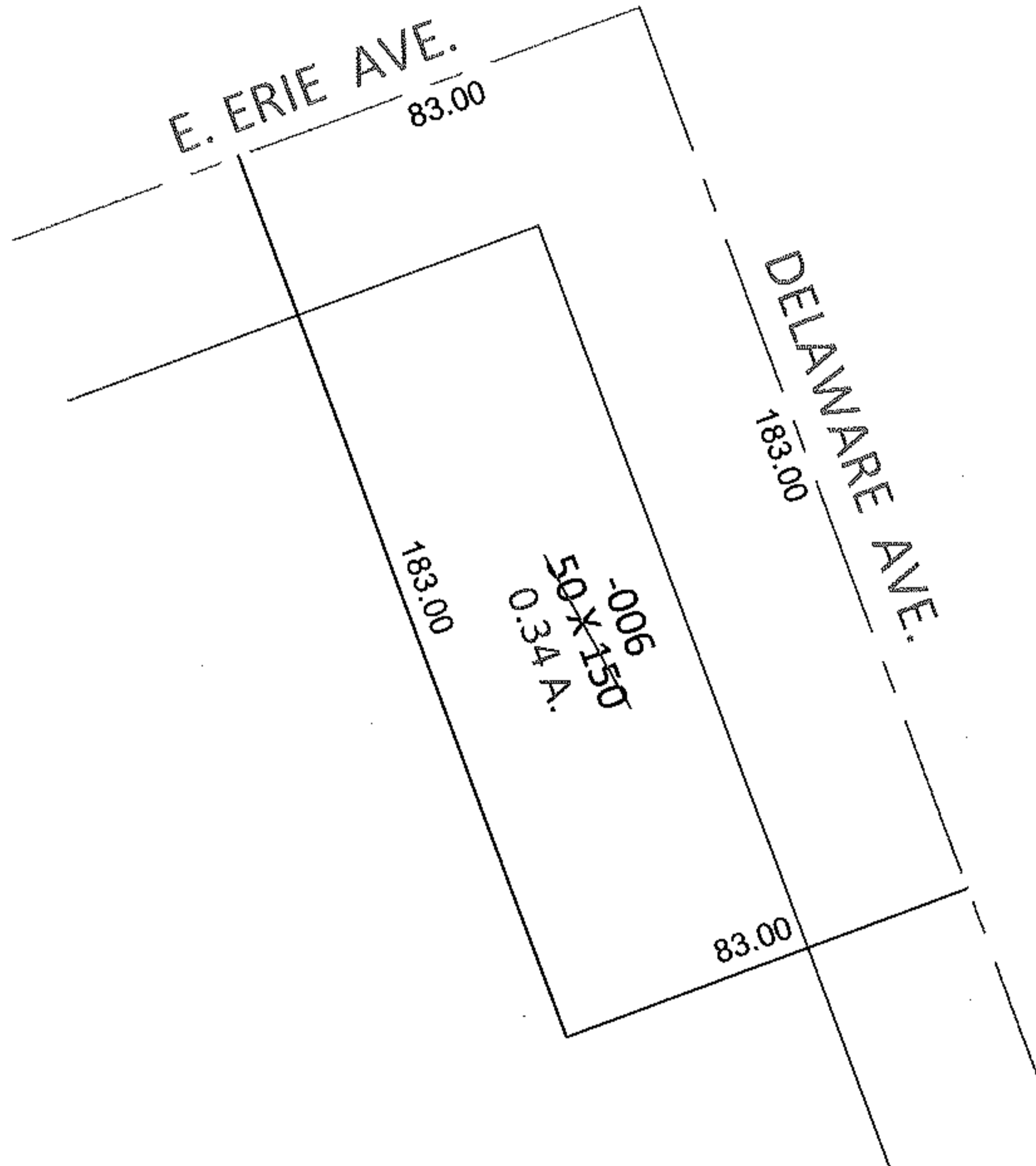
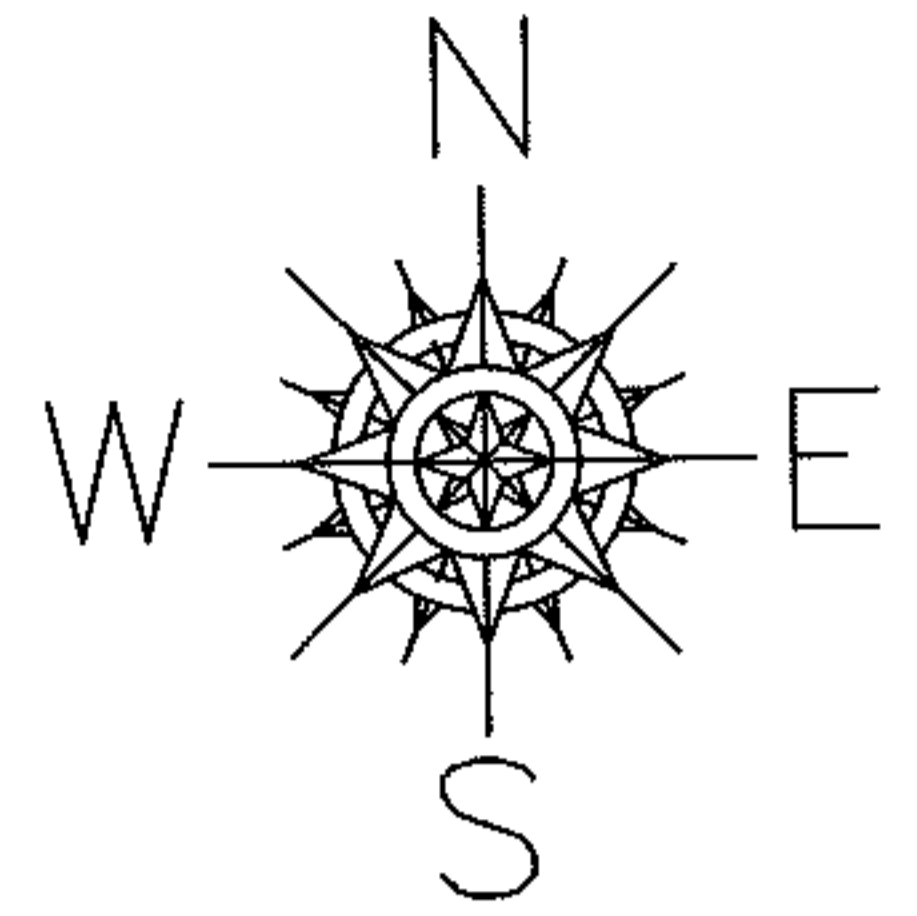


PARENT PARCEL: 02-01-002-107-006

10-02150-C

CHILD PARCEL:

STARTING POINT: INTERSECTION OF C/L OF EAST ERIE AVE. AND C/L OF GAWN AVE.



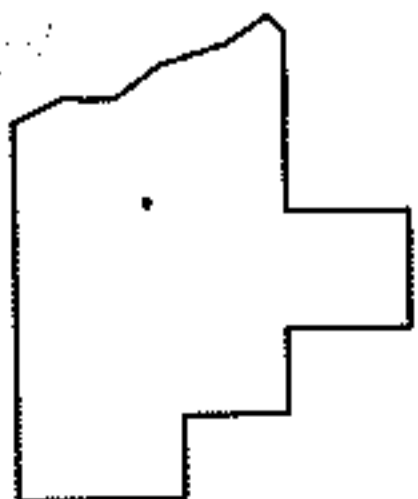
FRONTAGE AND DEPTH TO ACERAGE CORRECTION

02-01-002-107-006

0.34 A.

~~50 X 150~~

PER PRIOR DEEDS



SPLITS/DEEDS PROCESSED

LORAIN COUNTY TAX MAP DEPARTMENT
226 MIDDLE AVE. ELYRIA, OHIO

SURVEYED BY: N/A

CLOSURE: N/A

MAP PAGE(S): 2-01-003-A

APPROVED BY: RRM DATE: 12-9-10

SCALE: 1"= 50' PRIOR INST.: DV 91/22