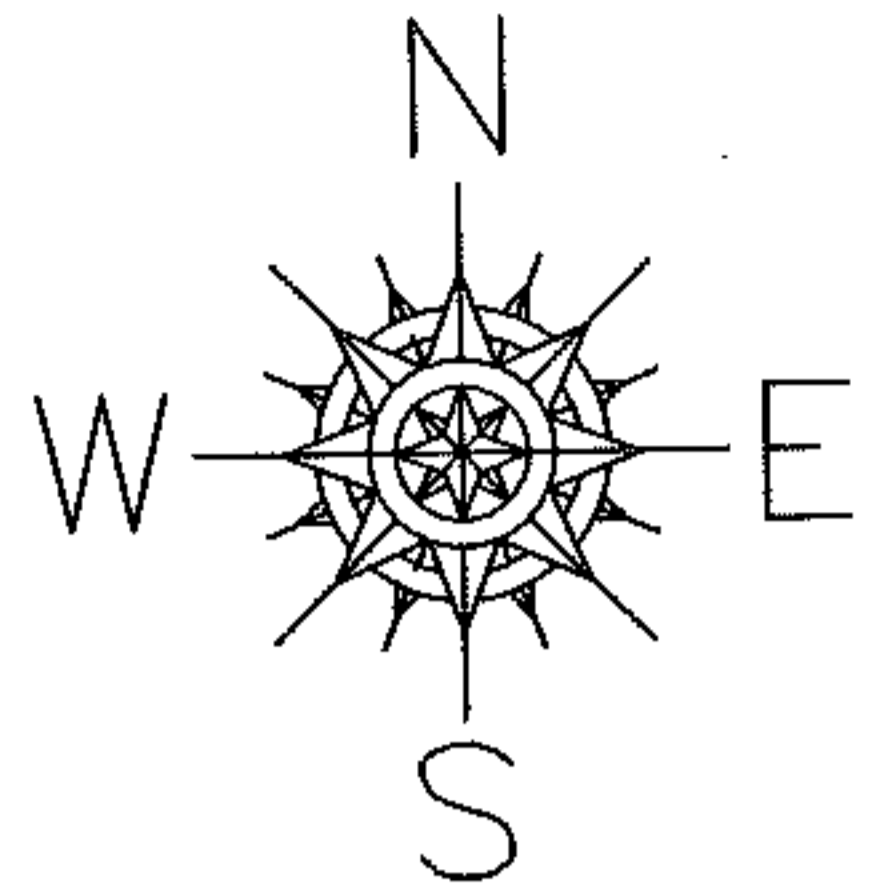


PARENT PARCEL: 06-24-061-101-002, -004, & -012

CHILD PARCEL: XX-XX-XXX-XXX-XXX

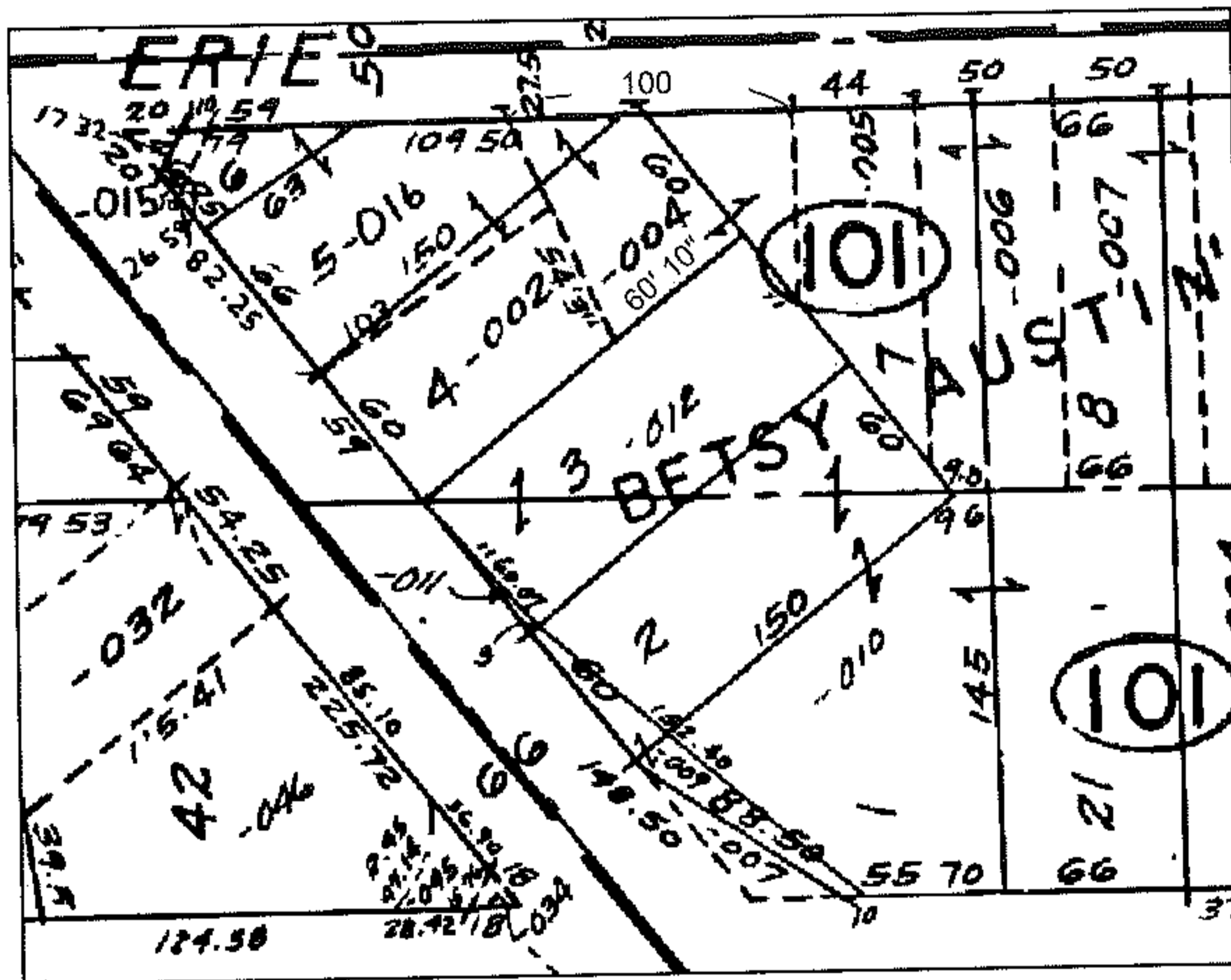
STARTING POINT: XXXXXX

10-02146-D



MAP CORRECTION ONLY

PER INST. # 20090281784



SPLITS/DEEDS PROCESSED

LORAIN COUNTY TAX MAP DEPARTMENT
226 MIDDLE AVE. ELYRIA, OHIO

SURVEYED BY: NONE

CLOSURE: NONE

MAP PAGE(S): 6-99

APPROVED BY: TJS DATE: 12/9/10

SCALE: 1" = 100 PRIOR INSTRUMENT: DV 1434/533