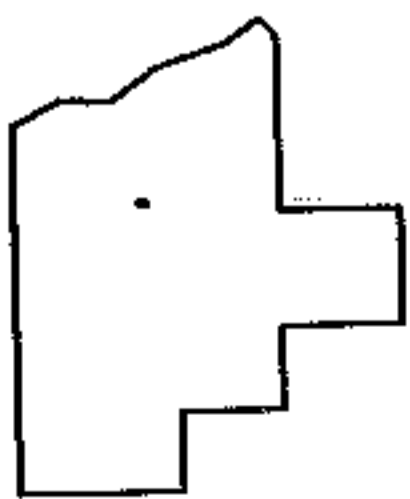
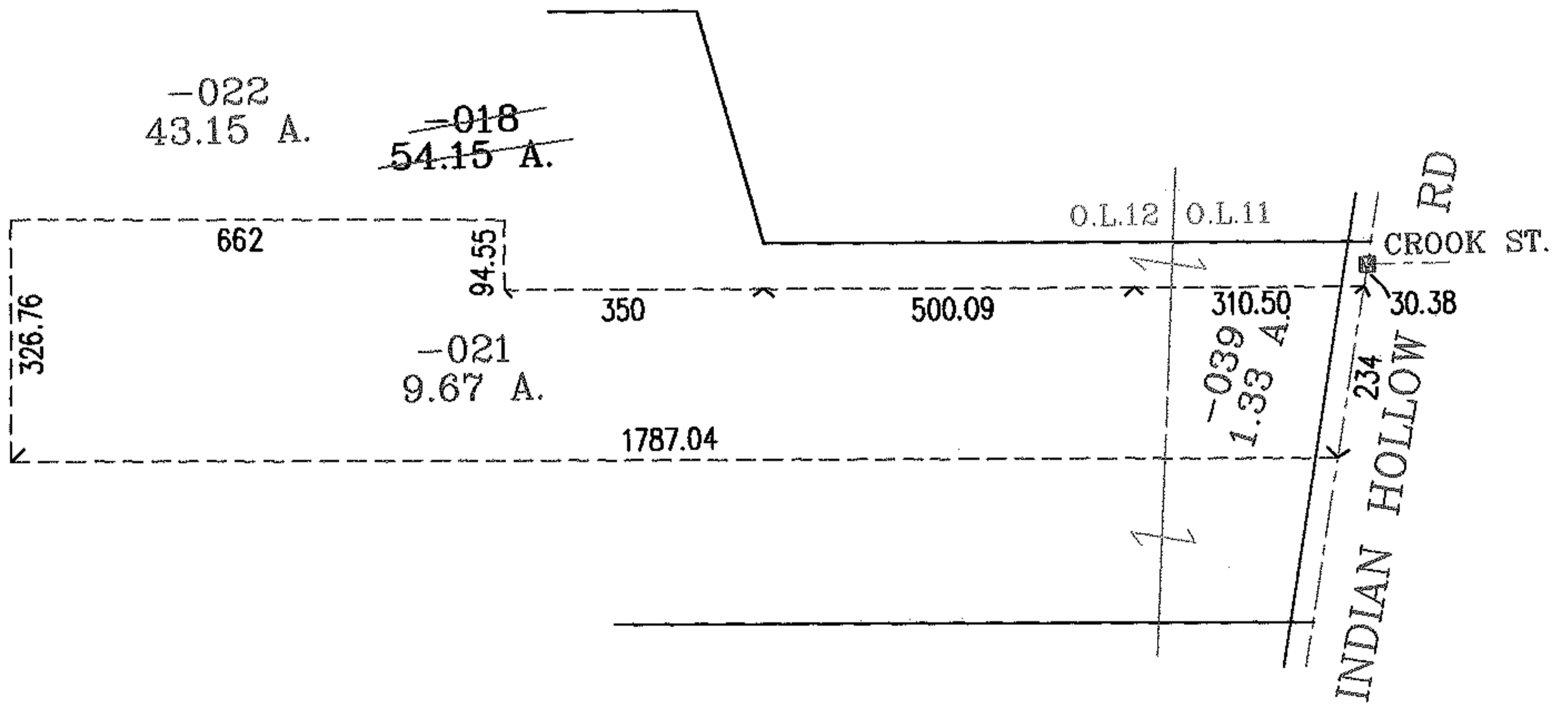
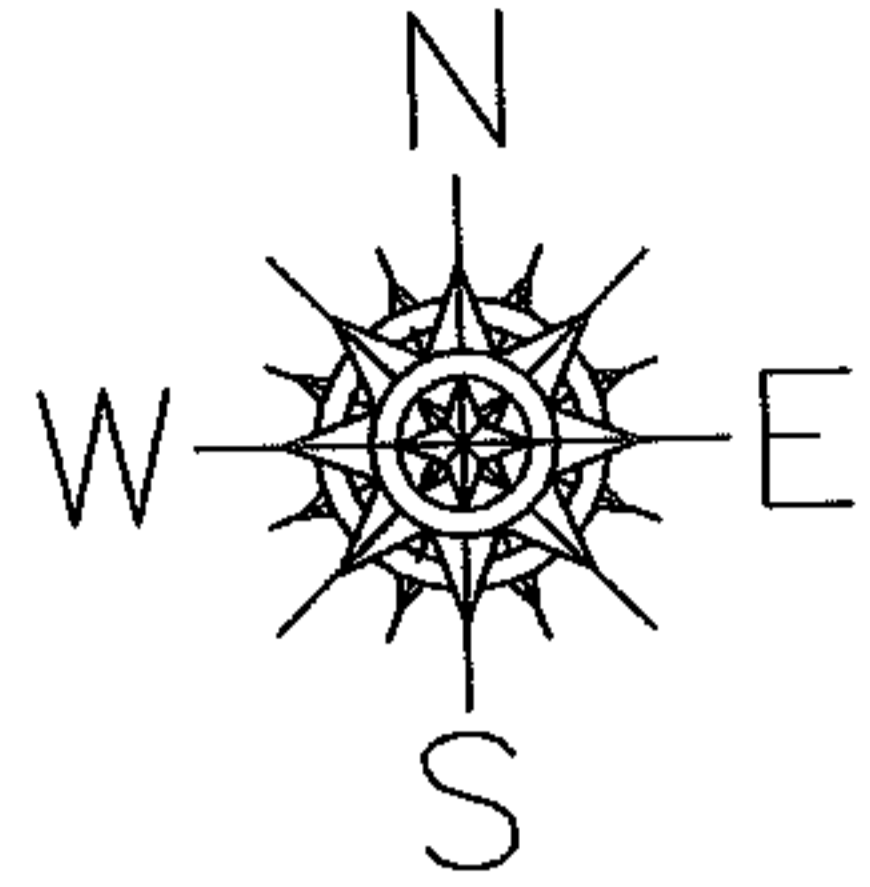


PARENT PARCEL: 15-00-012-000-018

CHILD PARCEL: 15-00-012-000-021, -022, 15-00-011-000-039

STARTING POINT: INTERSECTION OF C/L OF INDIAN HOLLOW RD. AND C/L OF CROOK ST.

06-02133



SPLITS/DEEDS PROCESSED

LORAIN COUNTY TAX MAP DEPARTMENT
226 MIDDLE AVE. ELYRIA, OHIO

SURVEYED BY: CHARLES W. FLANIGAN

CLOSURE: .01:10.000

MAP PAGE(S): 15-00-012-A

APPROVED BY: RRM DATE: 4/25/06

SCALE: 1" = 300 PRIOR INSTRUMENT: OR 849/127