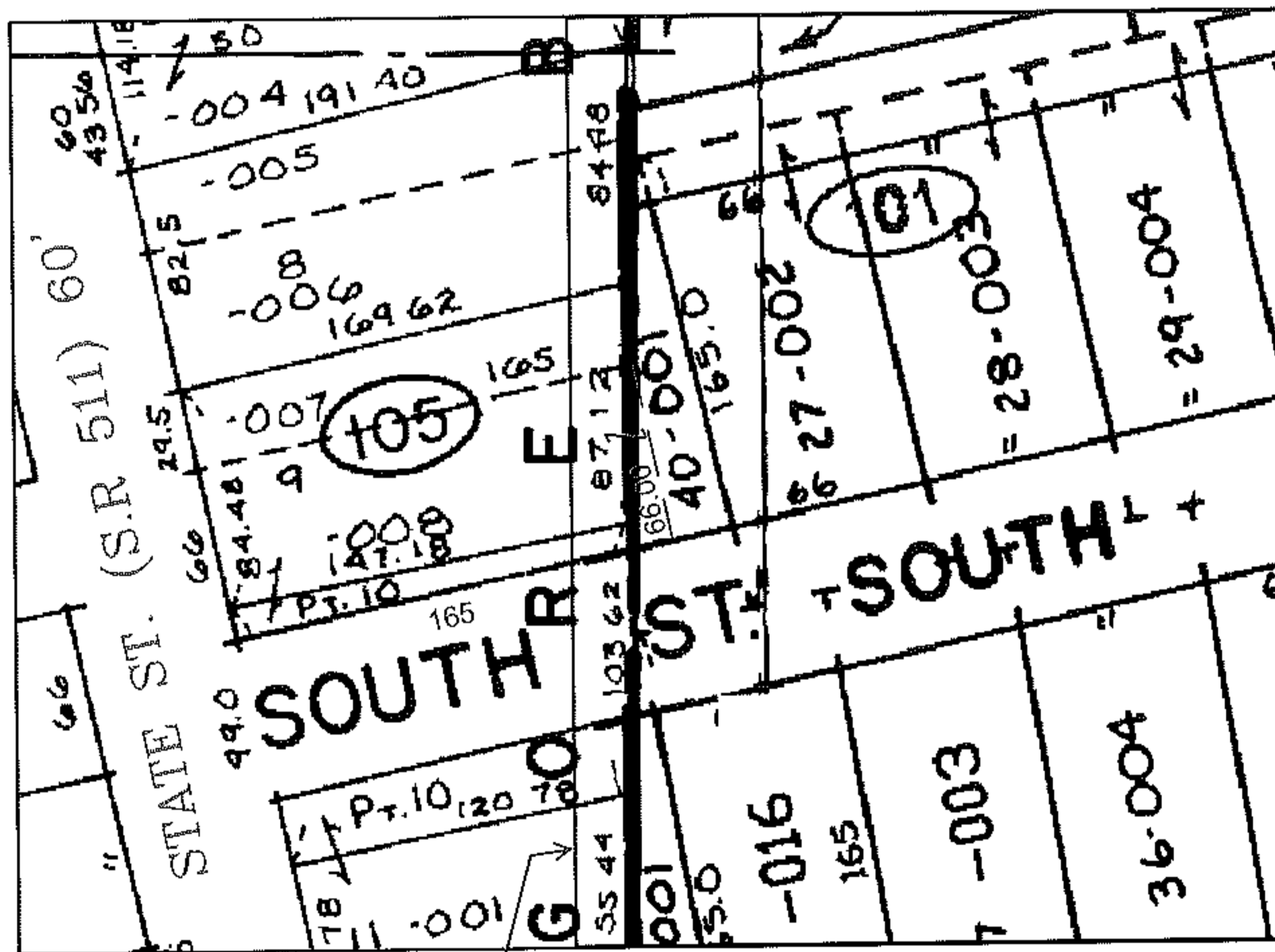
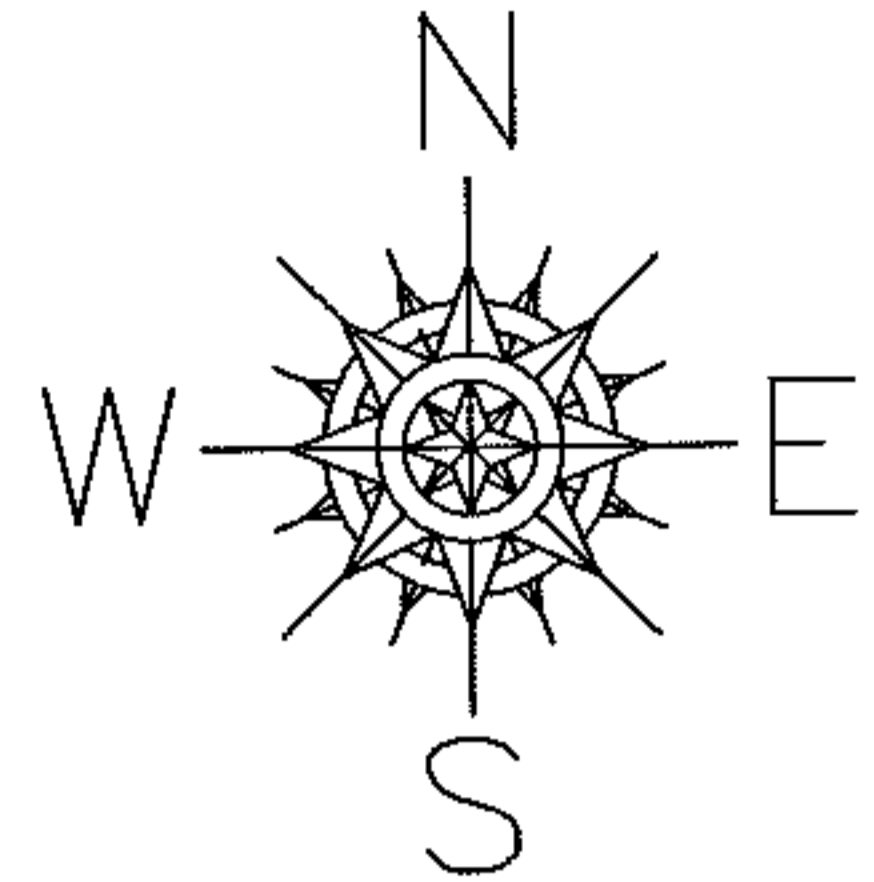


PARENT PARCEL: 20-05-022-105-008 & 20-05-016-101-001
CHILD PARCEL: XX-XX-XXX-XXX-XXX
STARTING POINT: INT, NORTH R.O.W. OF SOUTH ST. & EAST R.O.W. OF STATE ST. (S.R. 511)

10-02130-C

MAP CORRECTION

LINE CORR. PER DEED
DV 1348/146
INST. #20020878991



JE VIEW IMAGE LINE
NOT PROPERTY LINE

SPLITS/DEEDS PROCESSED

LORAIN COUNTY TAX MAP DEPARTMENT
226 MIDDLE AVE. ELYRIA, OHIO

SURVEYED BY: +NONE
CLOSURE: NONE
MAP PAGE(S): 20-05-022-B & -016-A
APPROVED BY: TJS DATE: 11/17/10
SCALE: 1" = 100 PRIOR INSTRUMENT: DV 1348/146