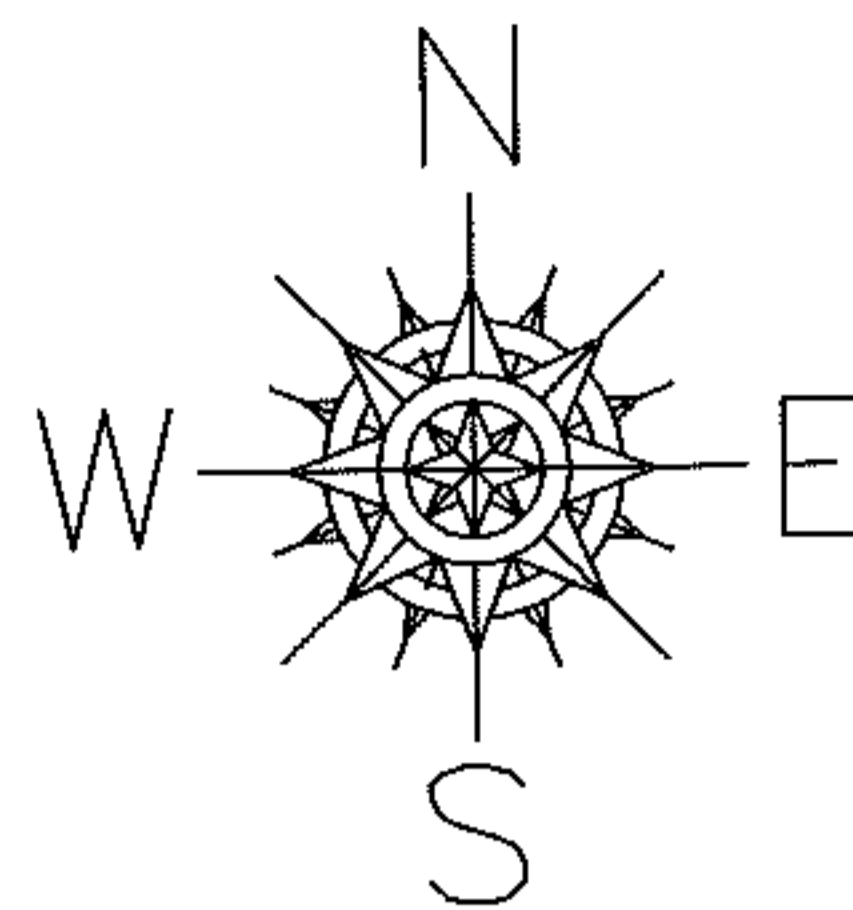


PARENT PARCEL: 03-00-106-117-001

CHILD PARCEL:

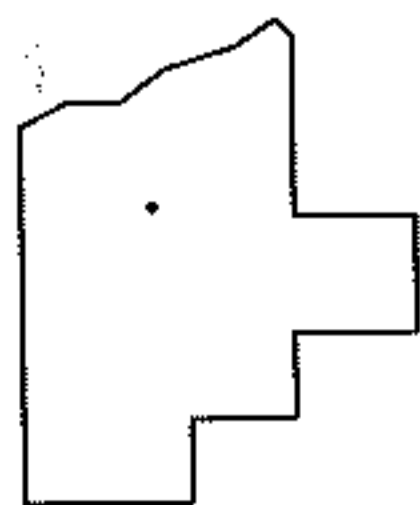
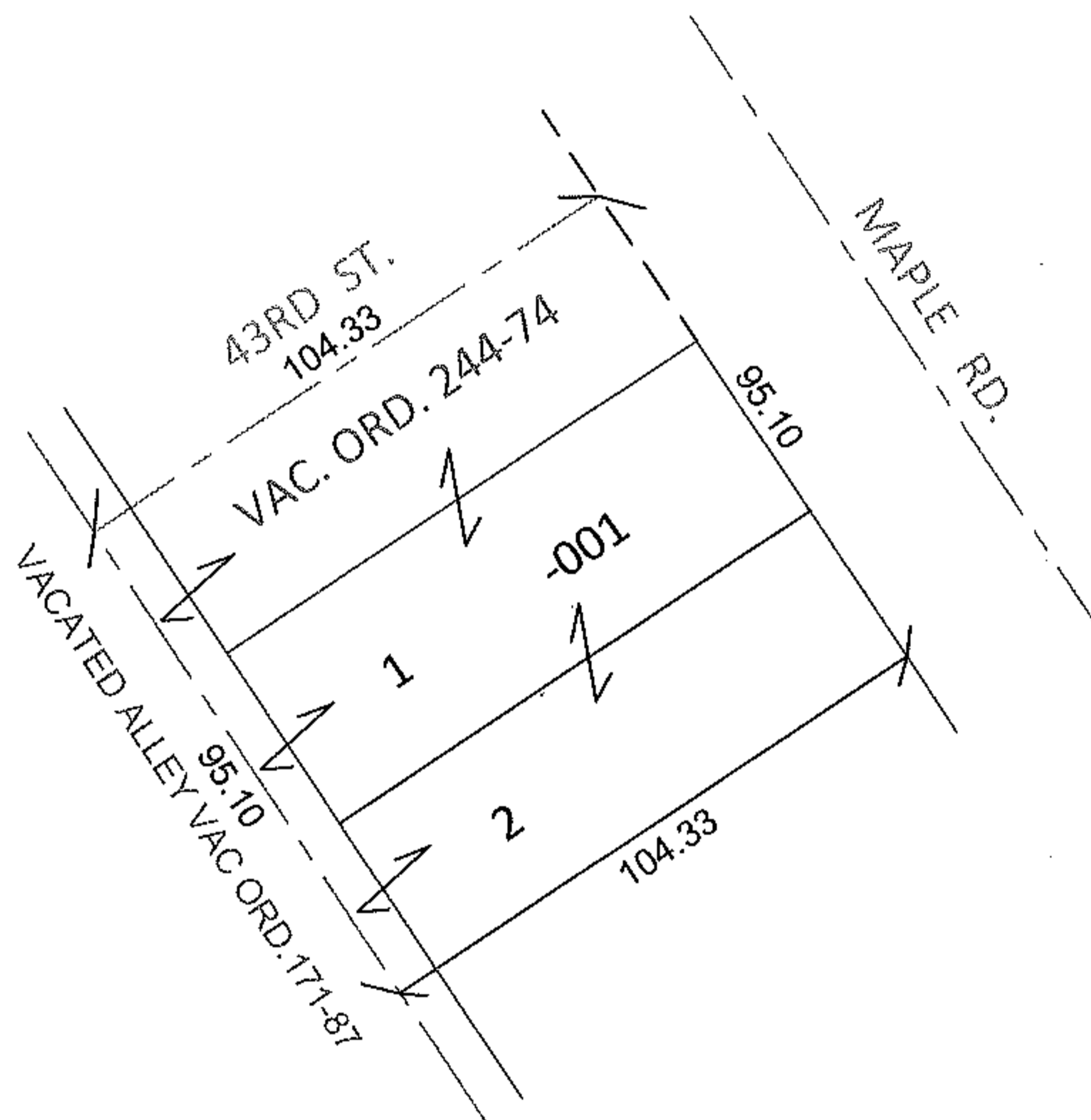
STARTING POINT: SUBLOT 1,2 IN BLOCK 23 OF CENTRAL DIVISION(VOL.9 PG.5) AND THE SOUTHERLY 30 FT. OF VACATED 43RD ST.

10-02127-C



FRONTAGE AND DEPTH CORRECTION

95.10 X 104.33 PER PRIOR DEEDS  
~~65.10 X 97~~  
03-00-106-117-001



SPLITS/DEEDS PROCESSED

LORAIN COUNTY TAX MAP DEPARTMENT  
226 MIDDLE AVE. ELYRIA, OHIO

SURVEYED BY: N/A

CLOSURE: N/A

MAP PAGE(S): 3-00-106-B

APPROVED BY: RRM DATE: 11-22-10

SCALE: 1"= 50' PRIOR INST.: 20010781405