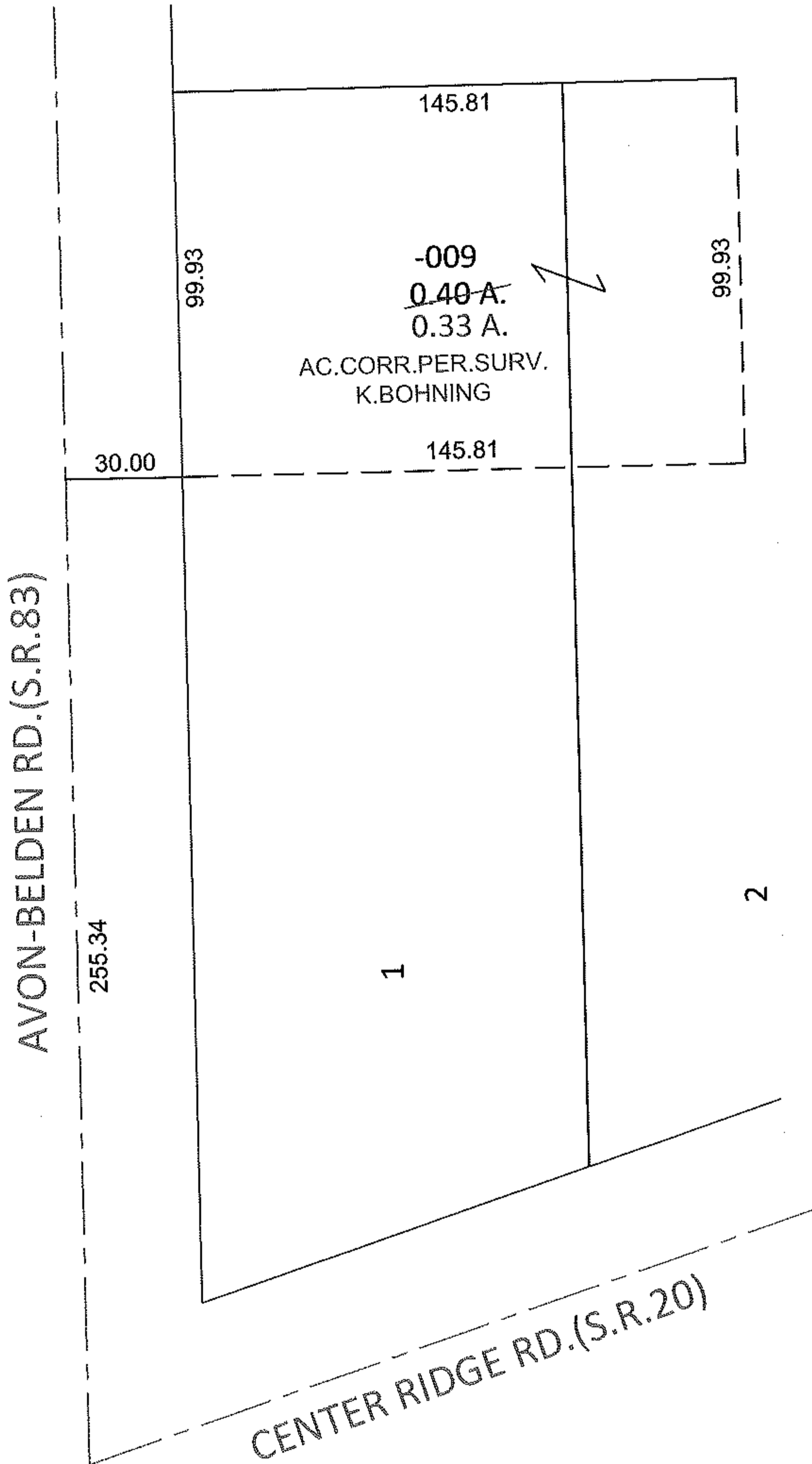
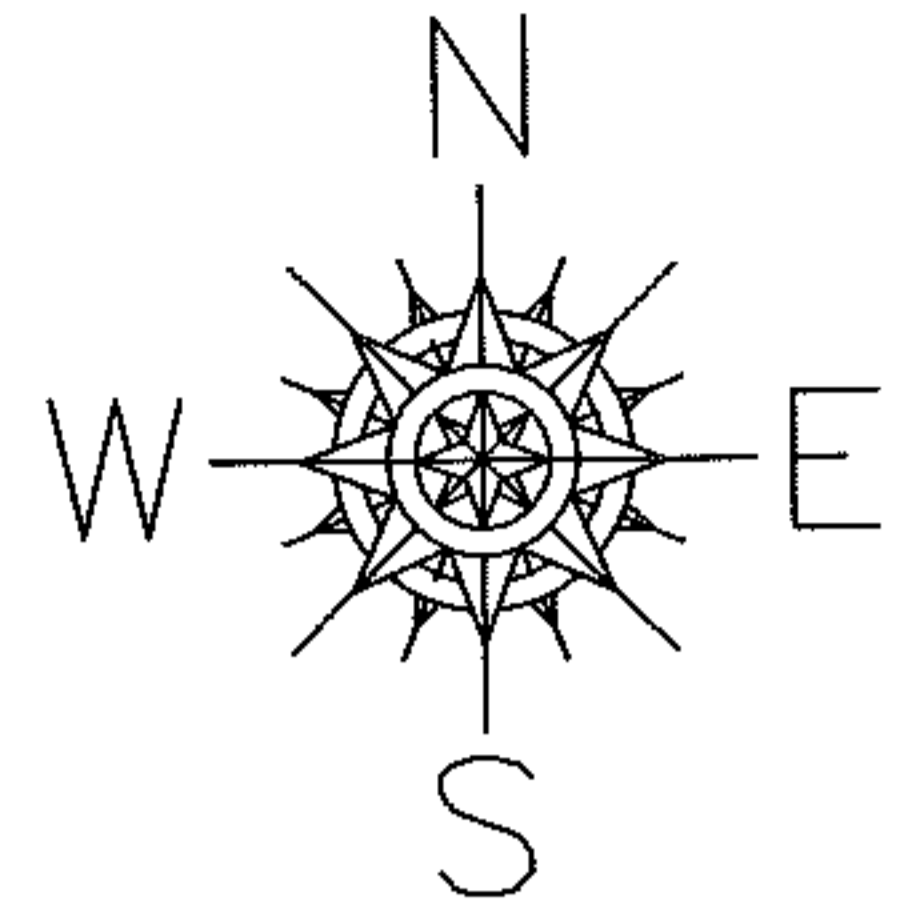


PARENT PARCEL: 07-00-021-102-009

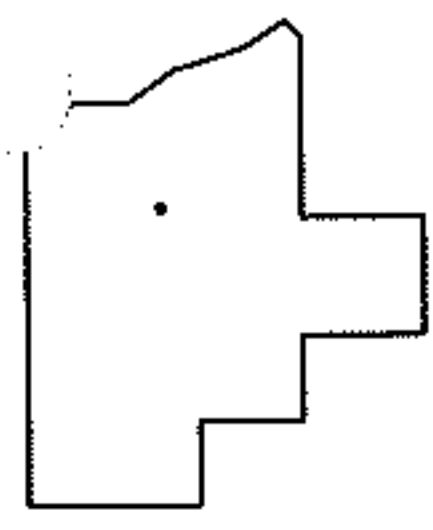
CHILD PARCEL: _____

STARTING POINT: INTERSECTION OF C/L OF S.R.83 AND C/L OF S.R.20

10-02126-A



-009
~~0.40 A.~~
 0.33 A.
 AC. CORR. PER. SURV.
 K. BOHNING



SPLITS/DEEDS PROCESSED

LORAIN COUNTY TAX MAP DEPARTMENT
226 MIDDLE AVE. ELYRIA, OHIO

SURVEYED BY: KENNETH L. BOHNING

CLOSURE: .00:10,000

MAP PAGE(S): 7-00-021-A

APPROVED BY: RRM DATE: 11-8-10

SCALE: 1" = 50' PRIOR INST.: OR 1326/312