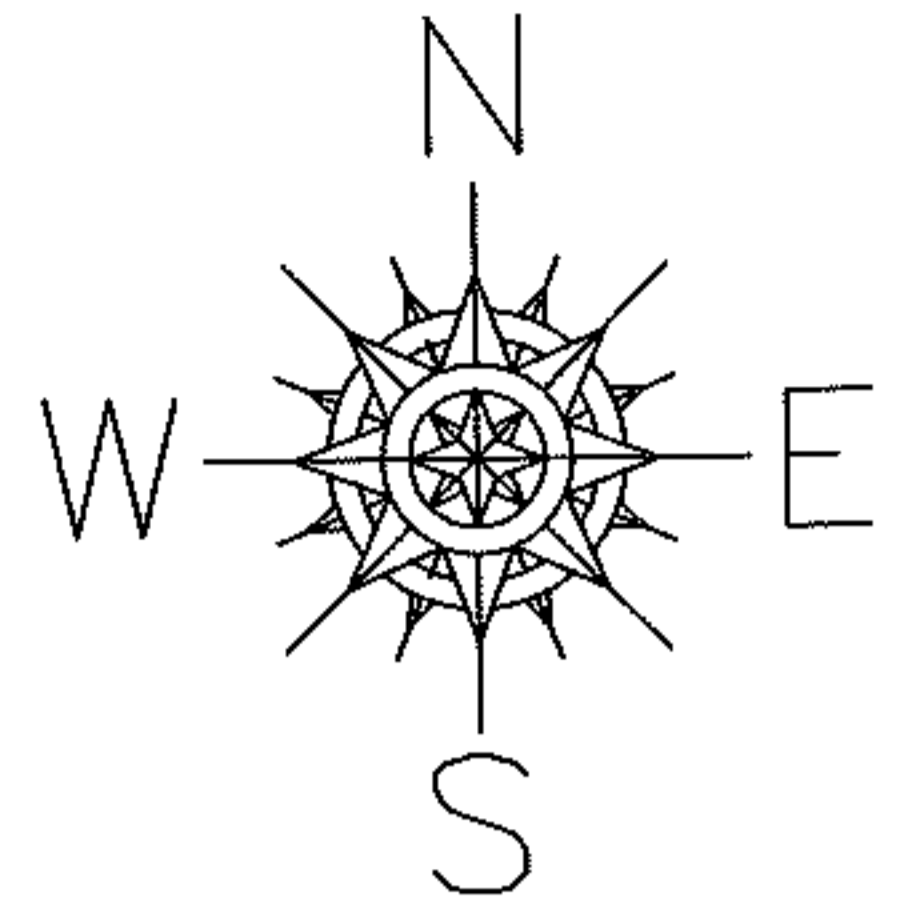


PARENT PARCEL: 12-00-071-000-041, 12-00-090-000-022

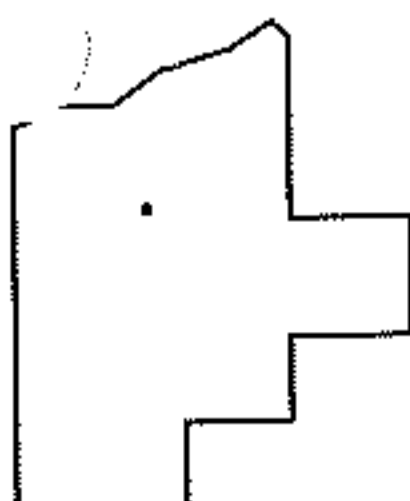
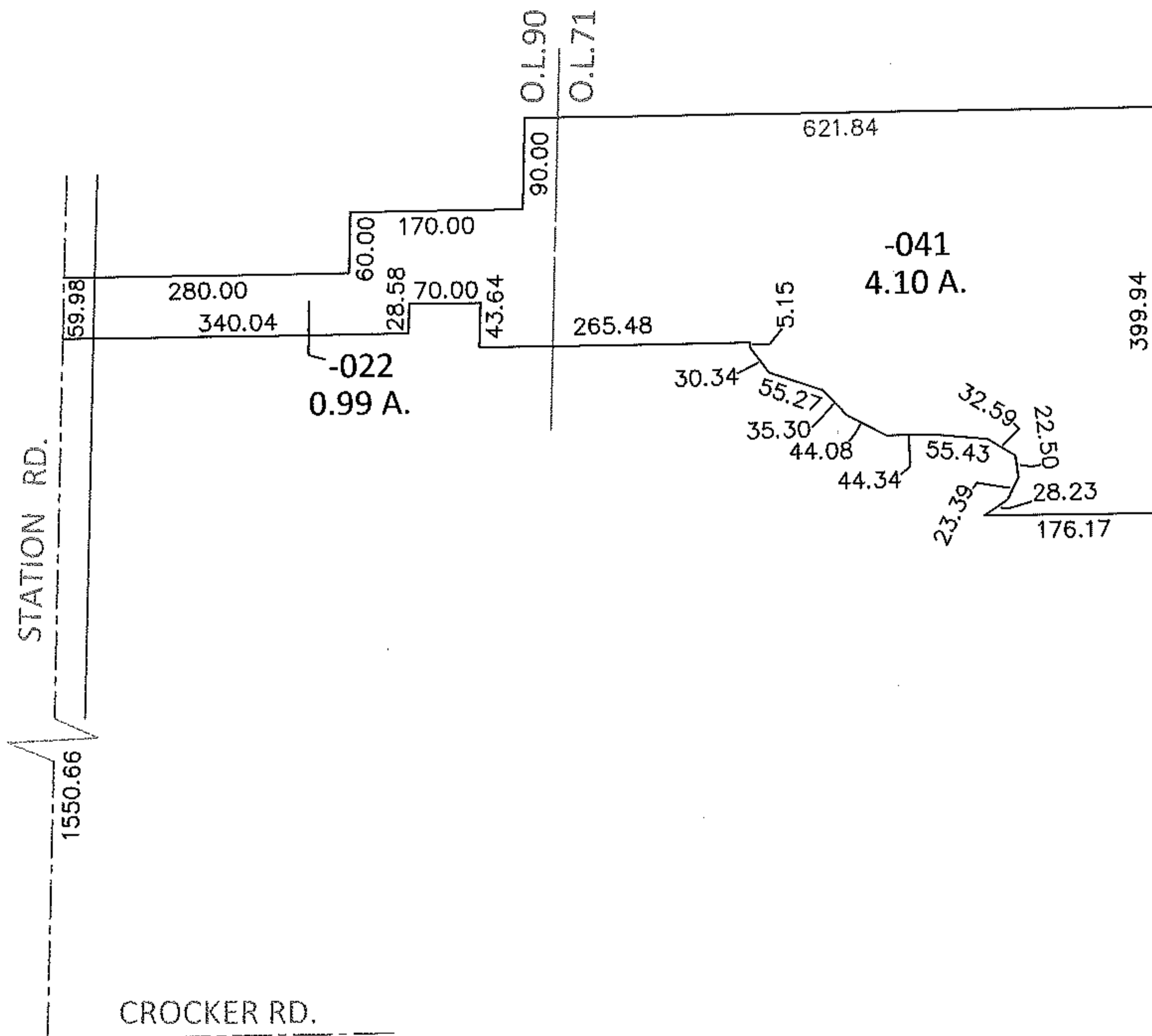
10-02119-D

CHILD PARCEL:

STARTING POINT: INTERSECTION OF C/L OF STATION RD. AND C/L OF CROCKER RD.



MAP CORRECTION ONLY



SPLITS/DEEDS PROCESSED

LORAIN COUNTY TAX MAP DEPARTMENT
226 MIDDLE AVE. ELYRIA, OHIO

SURVEYED BY: STEVEN W. CLUTTER

CLOSURE: .01:10,000

MAP PAGE(S): 12-00-071-A

APPROVED BY: RRM DATE: 10-26-10

SCALE: 1"= 200 PRIOR INST.: DV 1325/329