

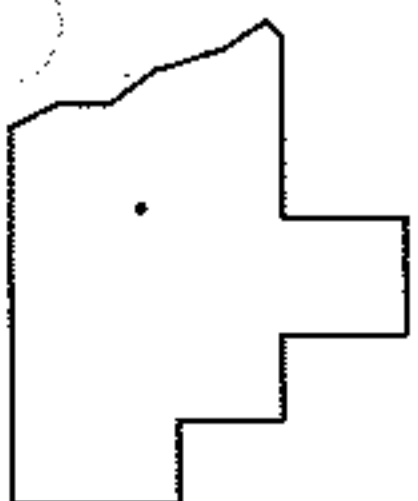
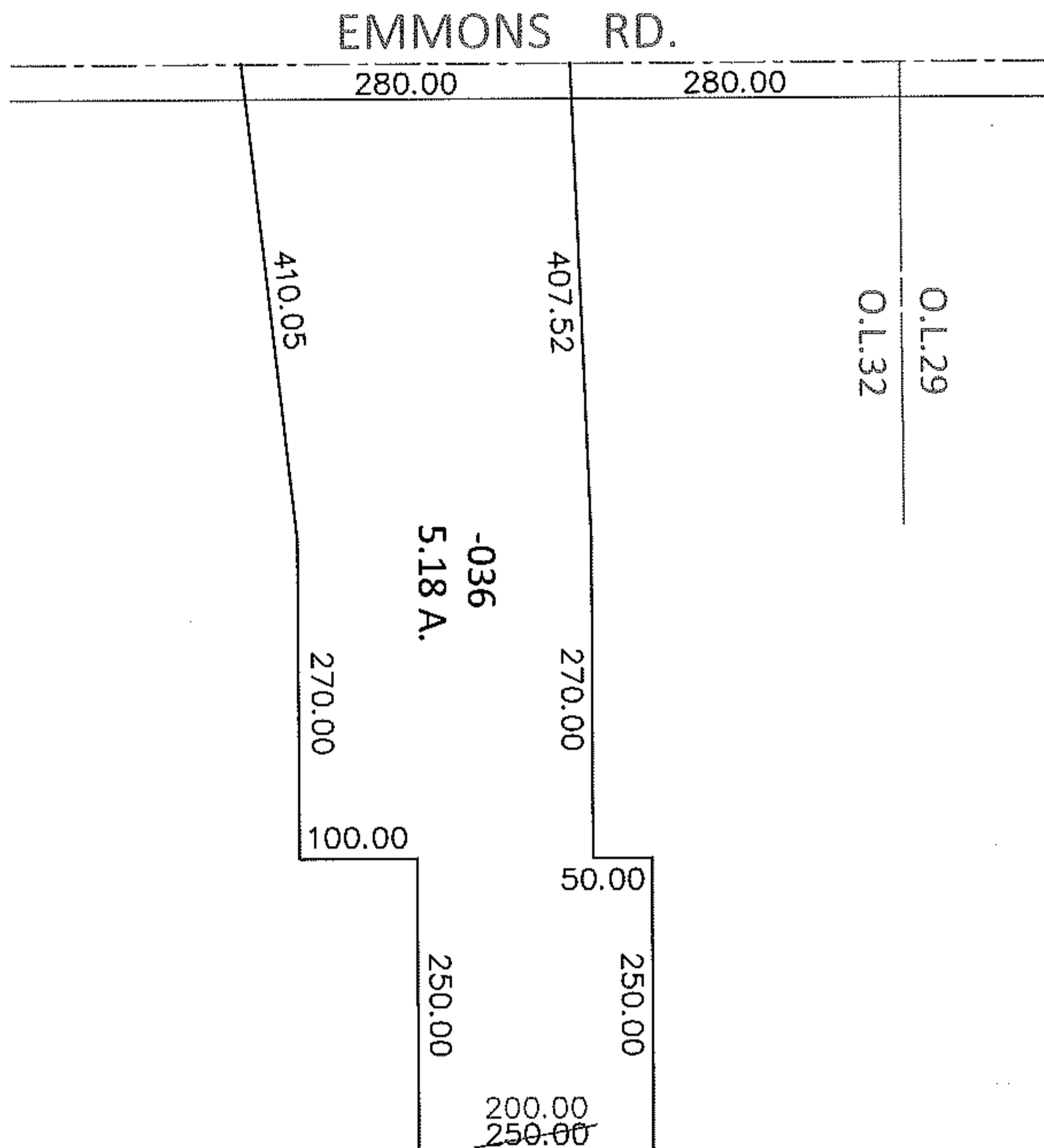
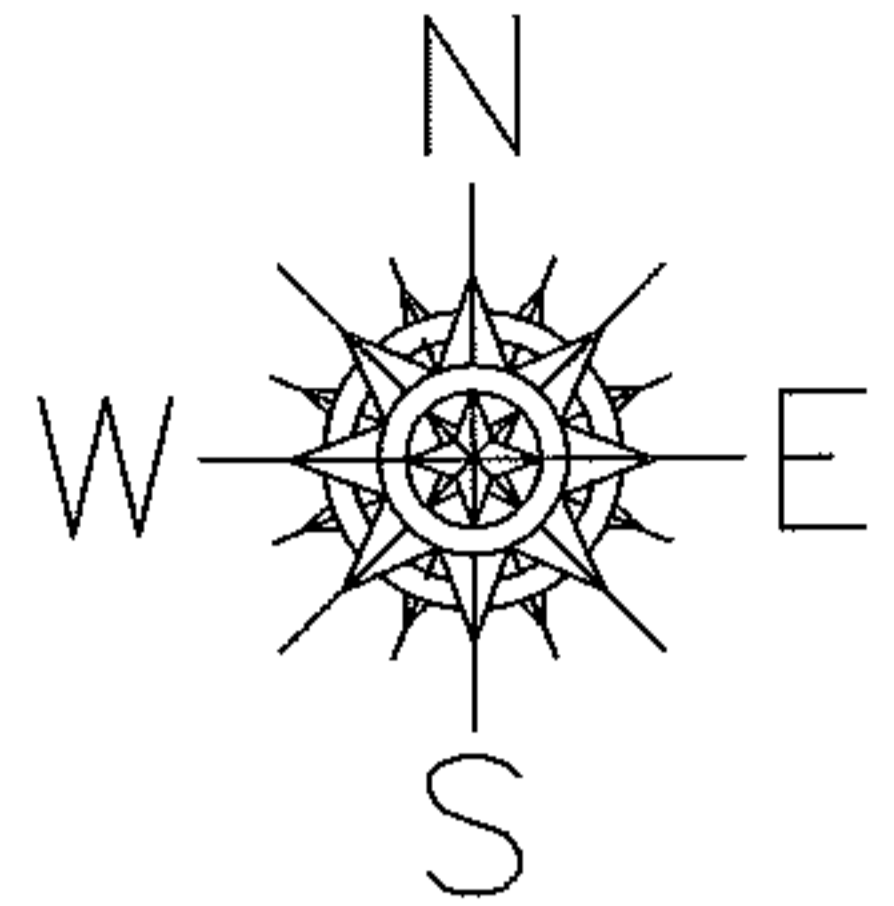
PARENT PARCEL: 12-00-032-000-036

CHILD PARCEL: \_\_\_\_\_

STARTING POINT: INTERSECTION OF C/L OF EMMONS RD. AND NORTHEAST CORNER OF O.L.32

10-02116-D

# MAP CORRECTION ONLY



## SPLITS/DEEDS PROCESSED

LORAIN COUNTY TAX MAP DEPARTMENT  
226 MIDDLE AVE. ELYRIA, OHIO

SURVEYED BY: KS ASSOCIATES

CLOSURE: .01:10,000

MAP PAGE(S): 12-G

APPROVED BY: RRM DATE: 10-12-10

SCALE: 1"=200 PRIOR INST.: 20030954687