

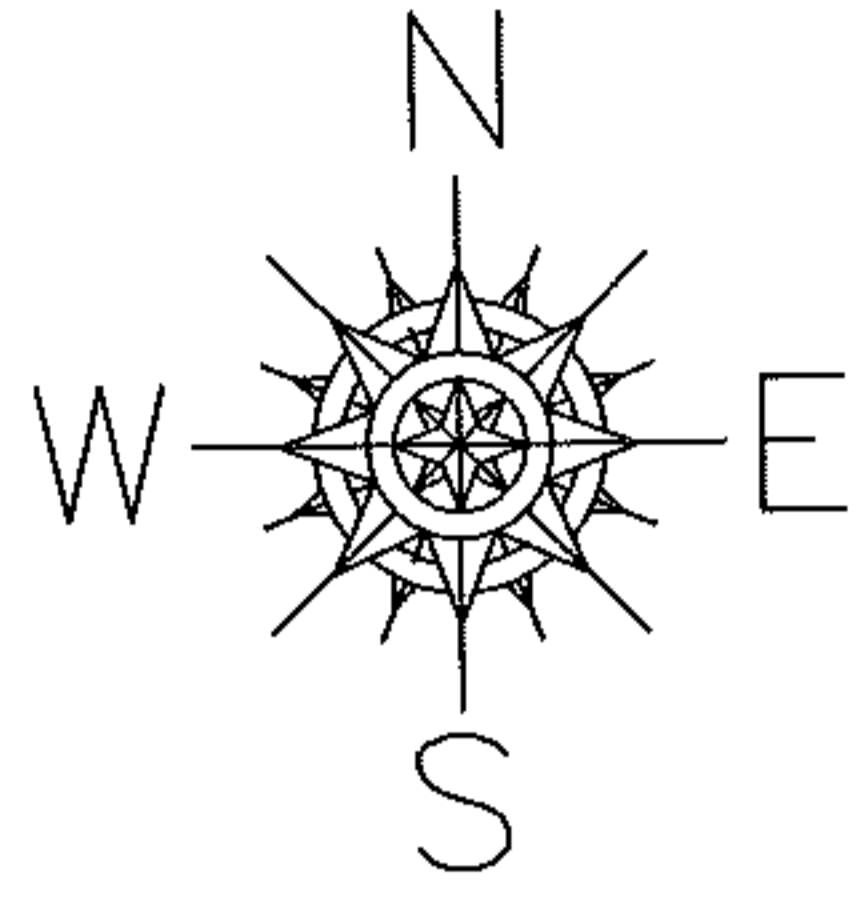
PARENT PARCEL: 02-01-003-262-013, 02-01-003-261-012, -015, & -016
 CHILD PARCEL: 02-01-003-261-031
 STARTING POINT: S.W. CORNER OF JEFFERSON ST.

10-02111-C

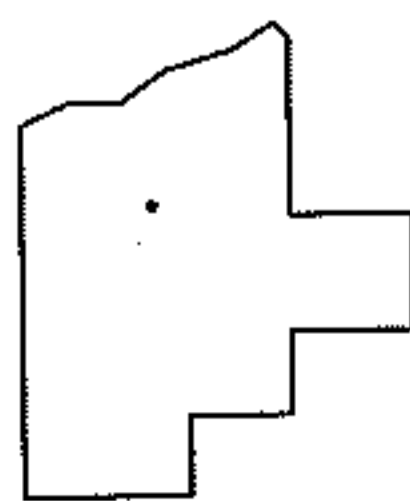
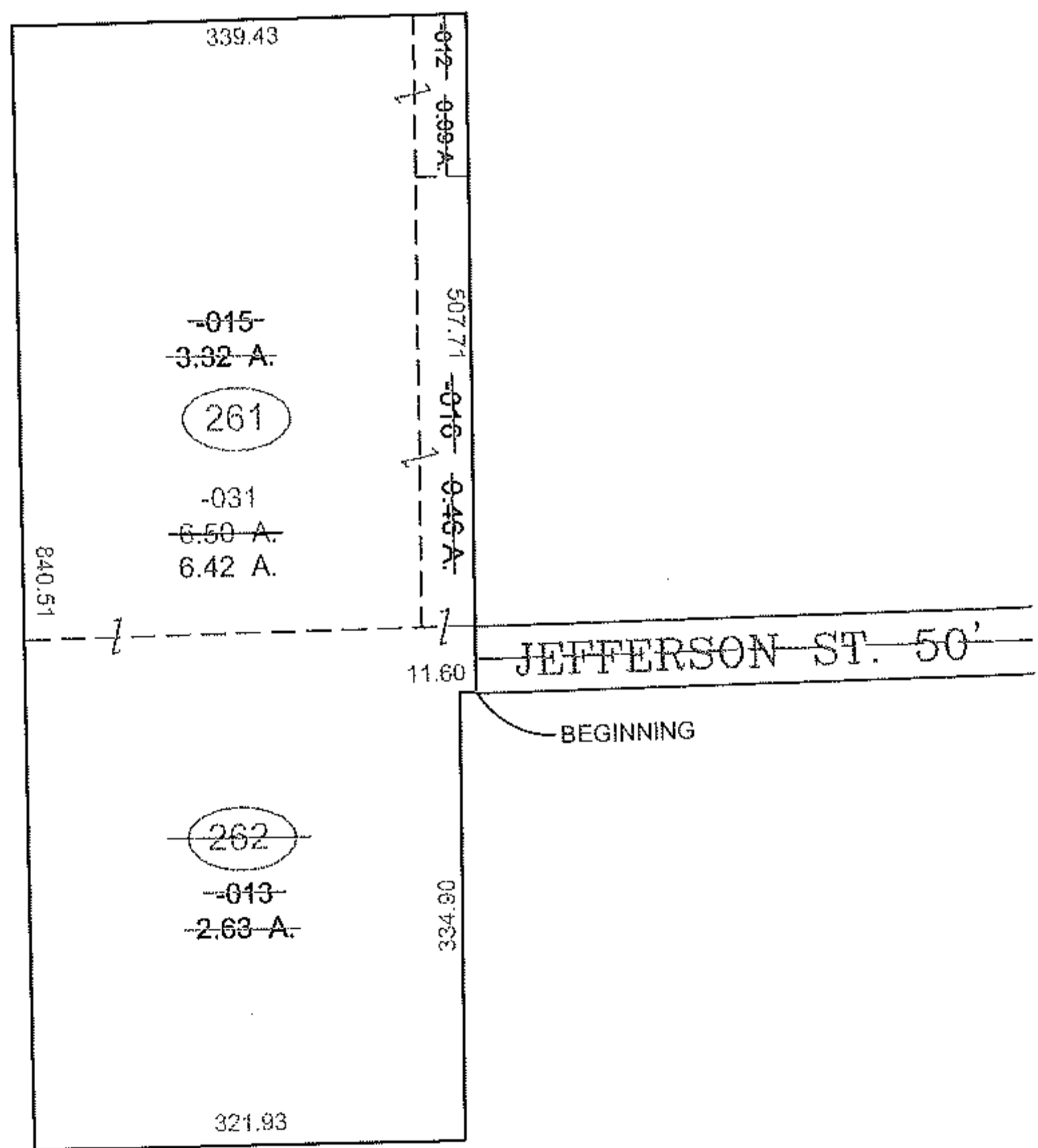
COMBINATION

- ~~02-01-003-262-013~~
2.63 A.
- ~~02-01-003-261-012~~
0.09 A.
- ~~02-01-003-261-015~~
3.32 A.
- ~~02-01-003-261-016~~
0.46 A.

- 02-01-003-261-031
~~6.50 A.~~
6.42 A.



AC. CORR. PER DEED
DV 1119/404



SPLITS/DEEDS PROCESSED
 LORAIN COUNTY TAX MAP DEPARTMENT
 226 MIDDLE AVE. ELYRIA, OHIO

SURVEYED BY: NONE
 CLOSURE: 1 : 18,000
 MAP PAGE(S): 02-01-003-1
 APPROVED BY: TJS DATE: 10/12/10
 SCALE: 1" = 200 PRIOR INST.: DV 1119/404