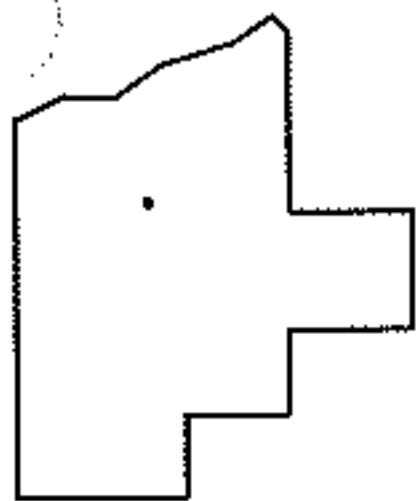
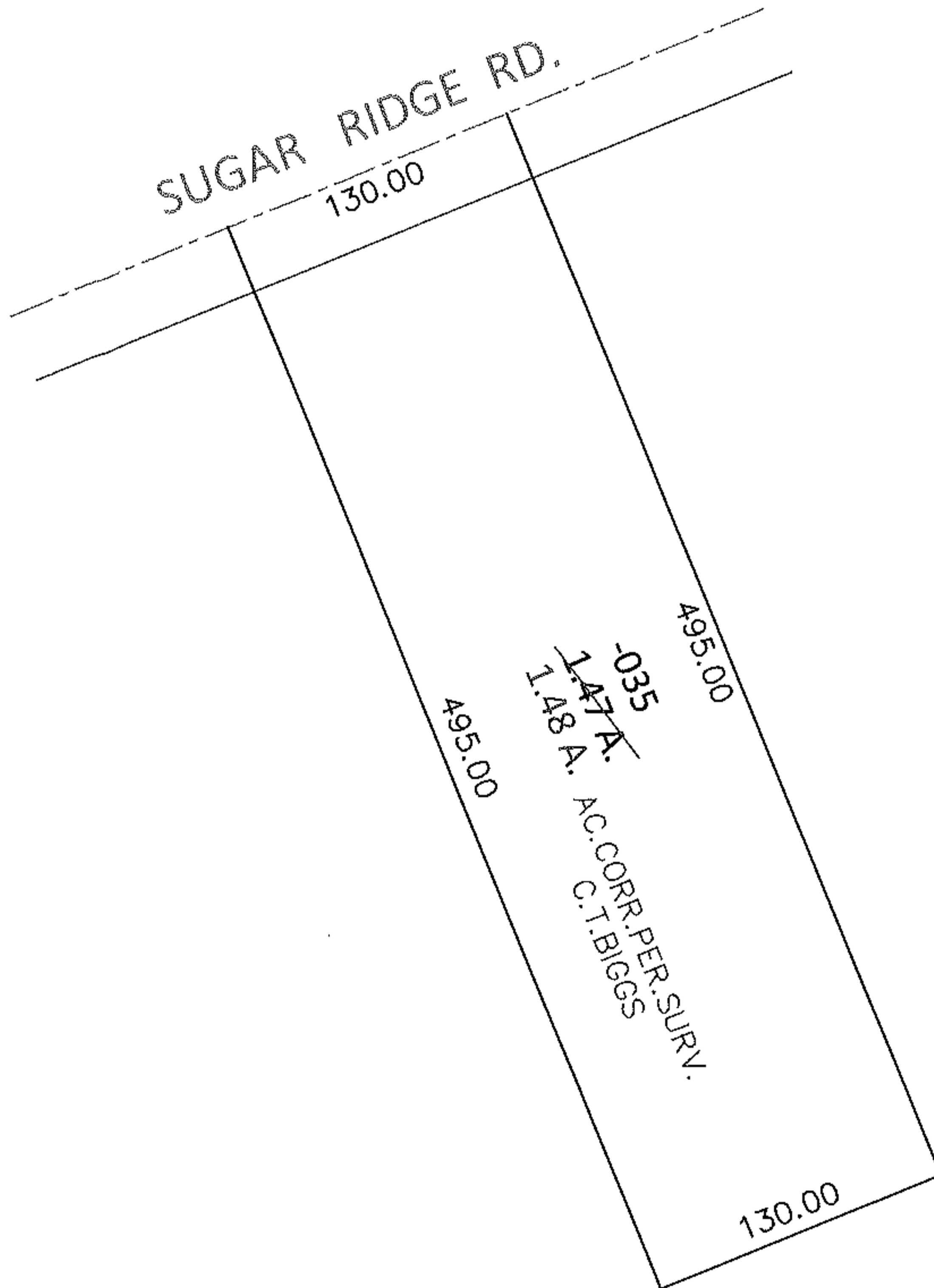
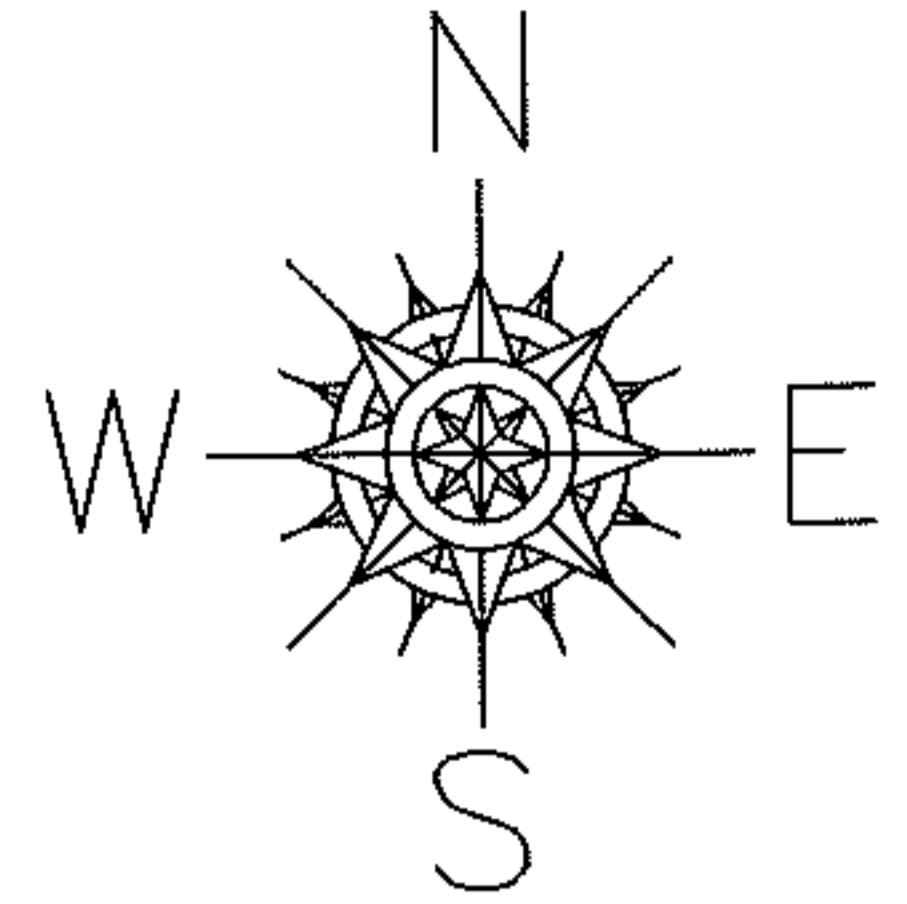


PARENT PARCEL: 07-00-038-000-035

CHILD PARCEL: _____

STARTING POINT: NORTHEAST CORNER OF LAND CONVEYED TO TIMOTHY STANDEN JR. (DV 36/368)

10-02110-A



SPLITS/DEEDS PROCESSED

LORAIN COUNTY TAX MAP DEPARTMENT
226 MIDDLE AVE. ELYRIA, OHIO

SURVEYED BY: C.T. BIGGS

CLOSURE: .01:10,000

MAP PAGE(S): 7-00-038-D

APPROVED BY: RRM DATE: 10-4-10

SCALE: 1"= 100 PRIOR INST.: OR 240/101