

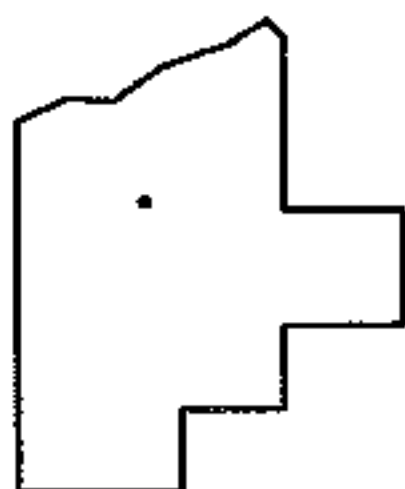
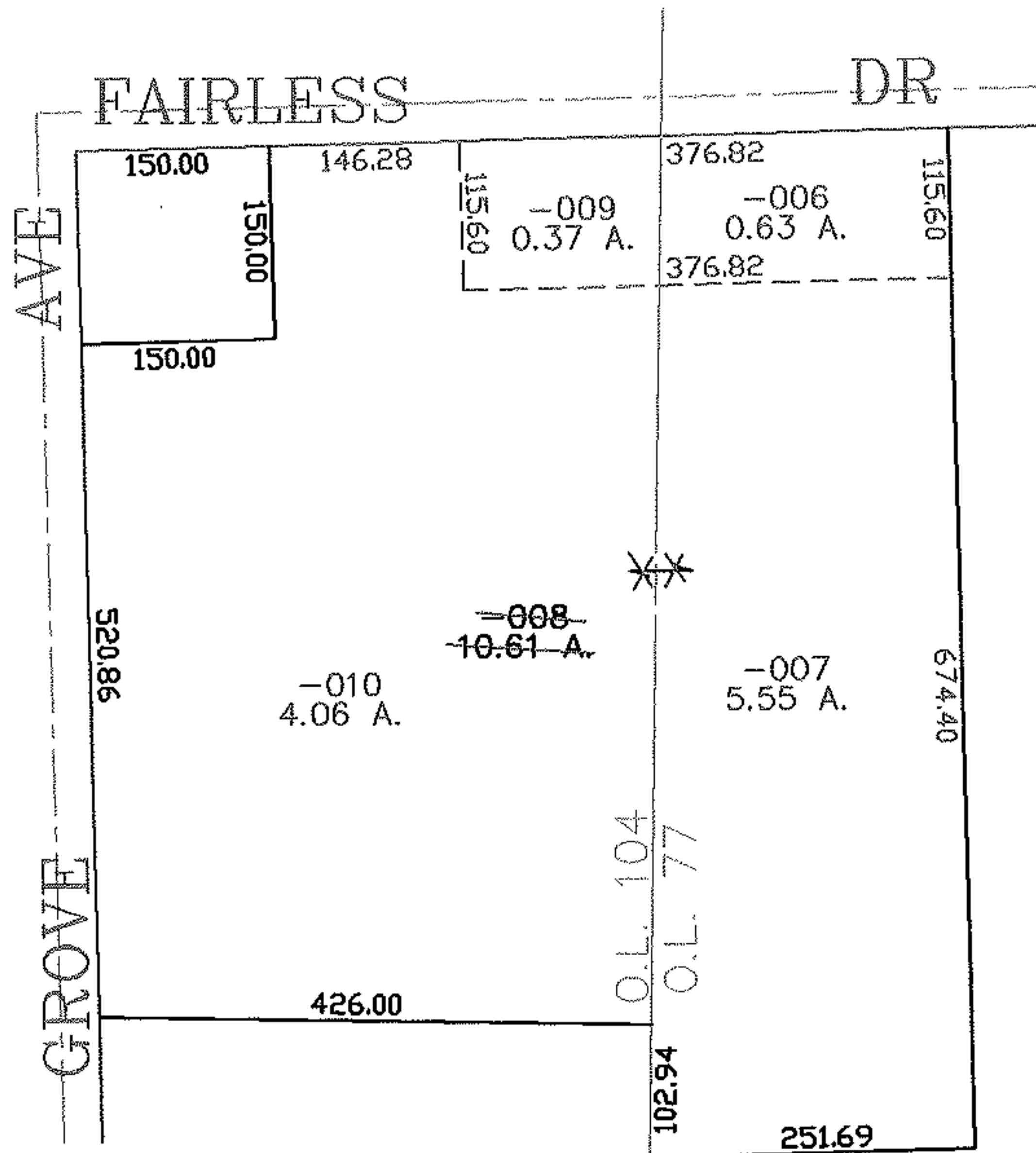
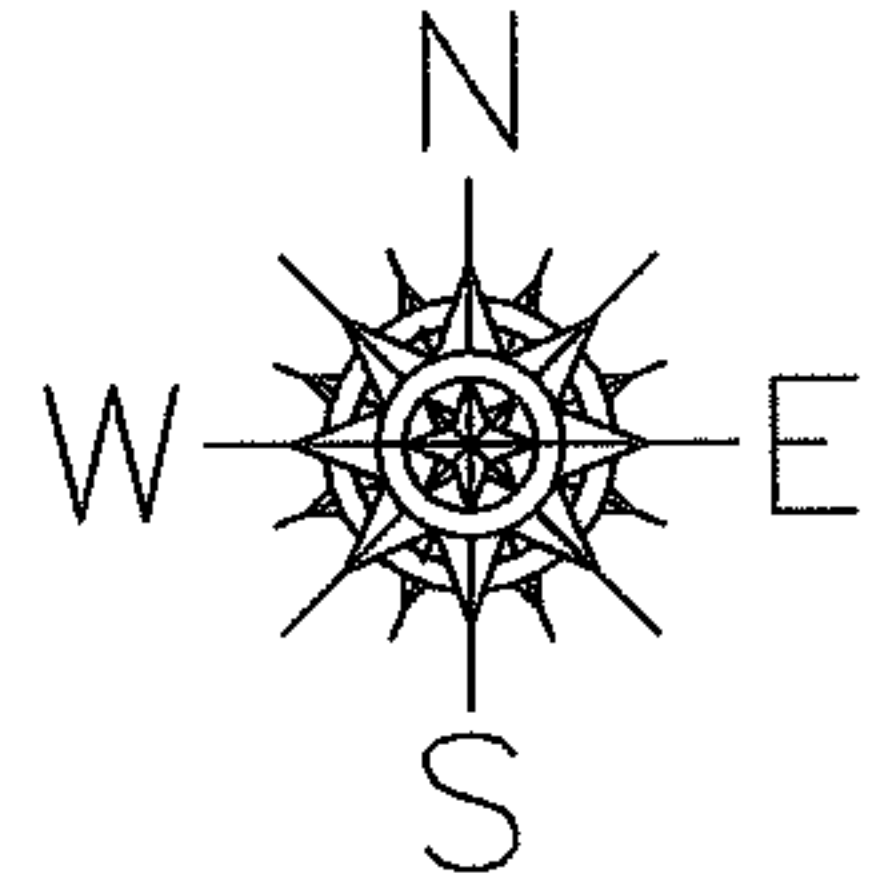
RASTER

PARENT PARCEL: 03-00-104-103-008

CHILD PARCEL: 03-00-104-103-009, -010 03-00-077-101-006, -007

STARTING POINT: SIDELINE OF GROVE AVE & FAIRLESS AVE

06-02109



SPLITS/DEEDS PROCESSED

LORAIN COUNTY TAX MAP DEPARTMENT
226 MIDDLE AVE. ELYRIA, OHIO

SURVEYED BY: DAVE ELWELL
 CLOSURE: 0.00 : 10.000
 MAP PAGE(S): 03-00-104-B
 APPROVED BY: JAH DATE: 2-23-06
 SCALE: 1" = 200 PRIOR INSTRUMENT: 20040048577