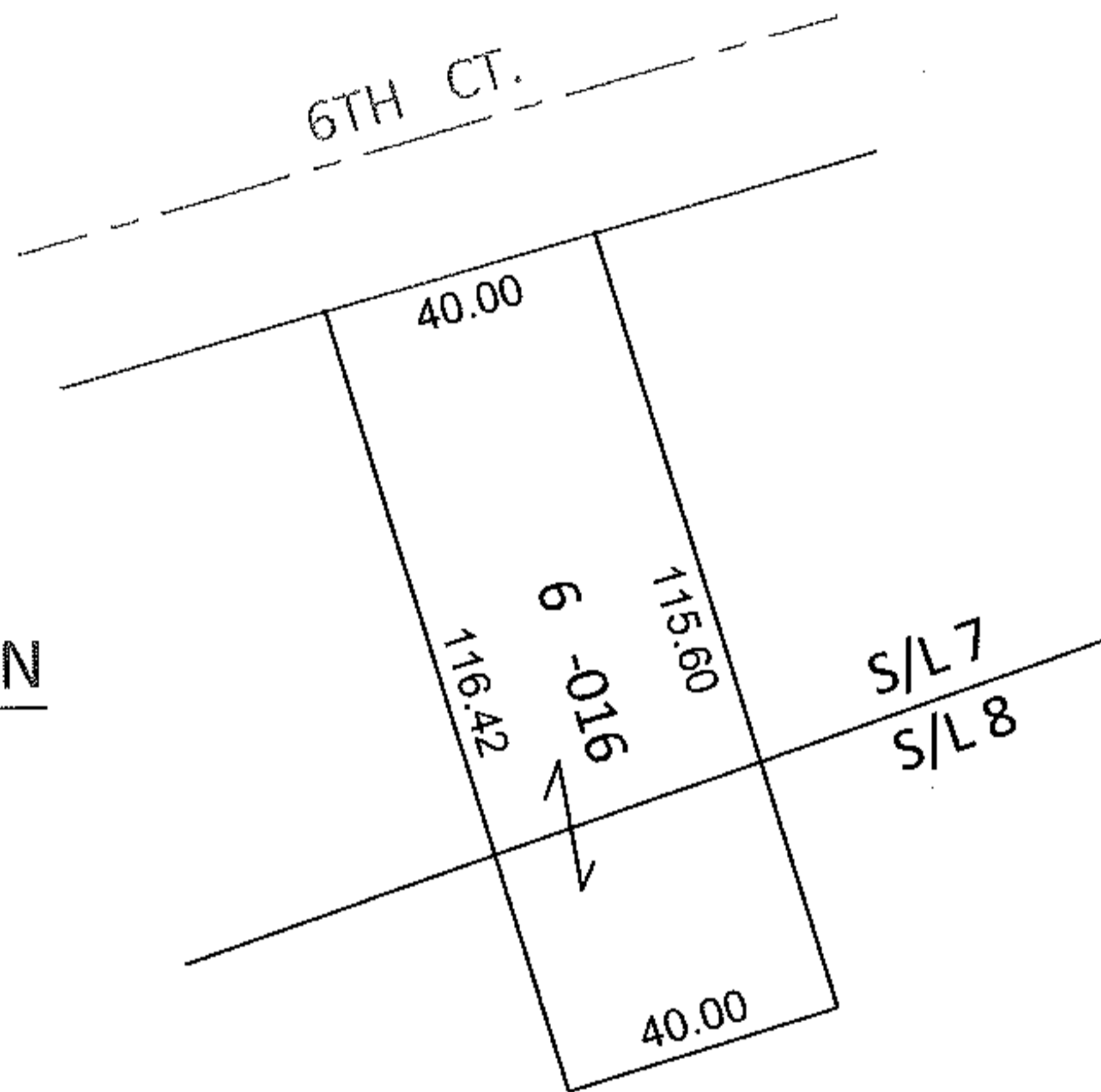
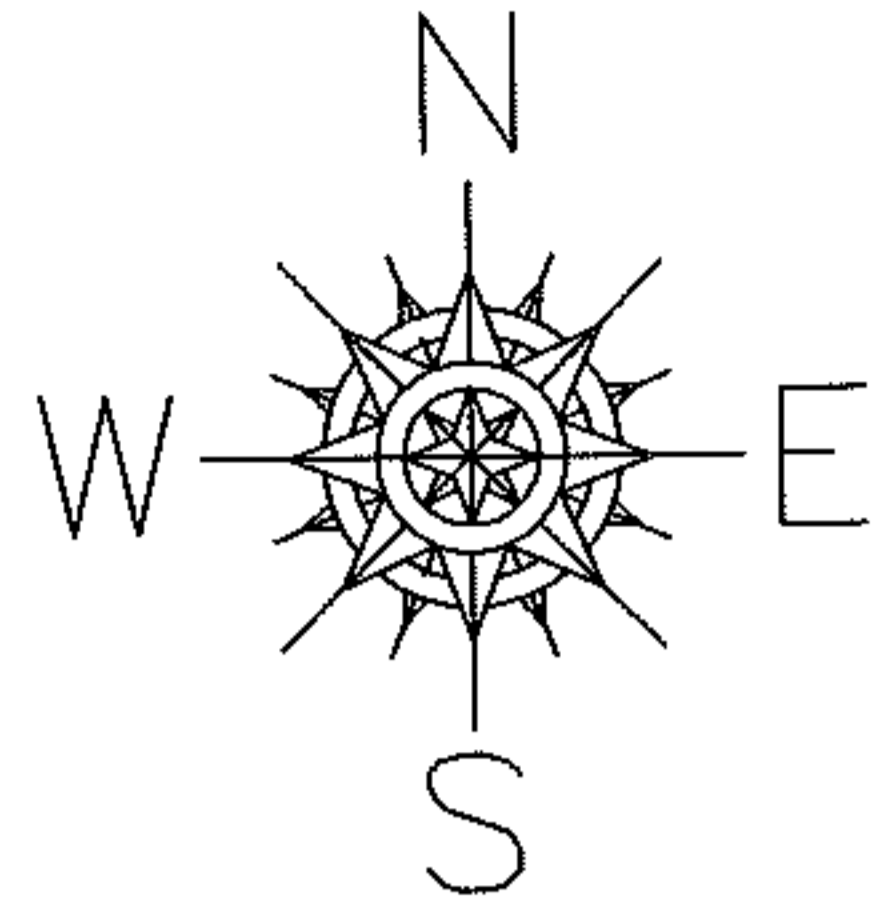


PARENT PARCEL: 02-01-005-113-016

CHILD PARCEL: _____

STARTING POINT: S/L 6 IN STANG'S PROPOSED ADDITION

10-02107-C



DEPTH CORRECTION

02-01-005-113-016

40 X 116.42

~~40 X 116~~

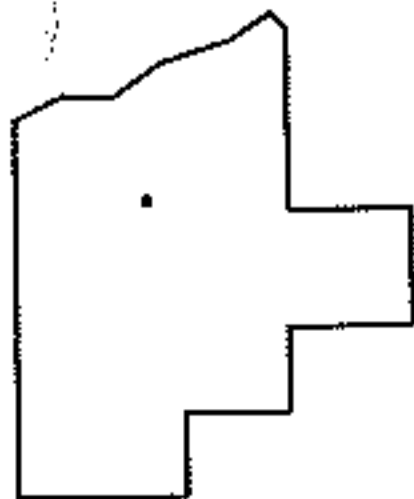
PER PRIOR DEEDS

20020856064

2002837069

AND COURT CASE NO.

10CV168335



SPLITS/DEEDS PROCESSED

LORAIN COUNTY TAX MAP DEPARTMENT

226 MIDDLE AVE. ELYRIA, OHIO

SURVEYED BY: N/A

CLOSURE: N/A

MAP PAGE(S): 2-01-004-B

APPROVED BY: RRM DATE: 9-30-10

SCALE: 1"= 50' PRIOR INST.: SEE ABOVE