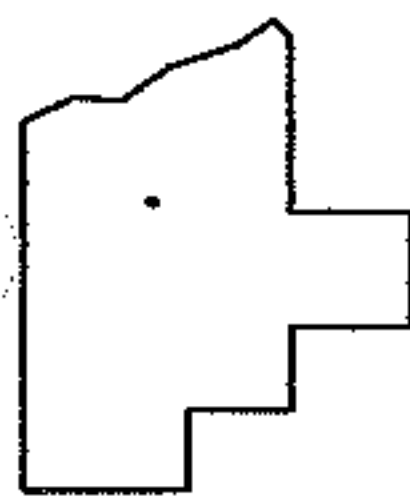
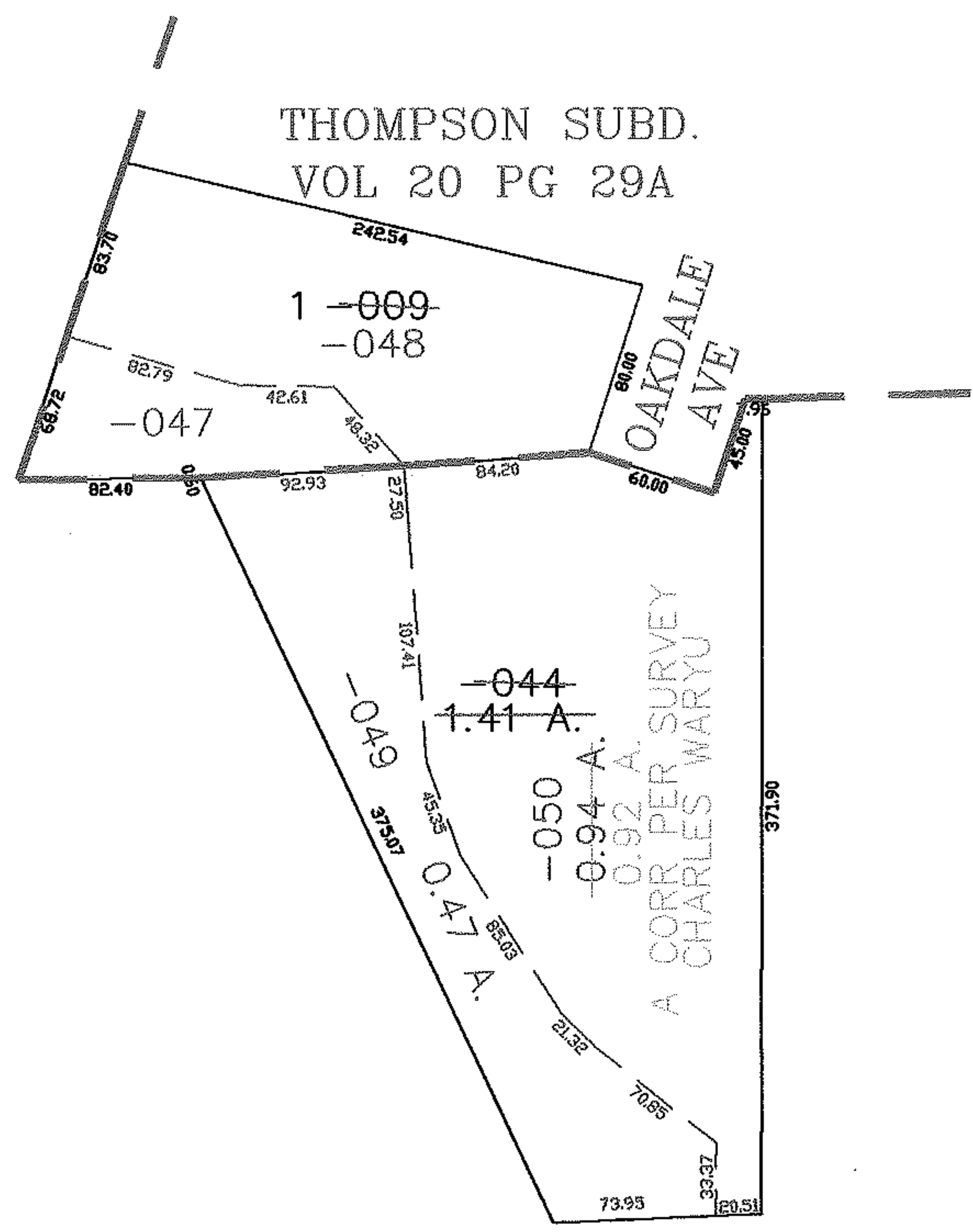
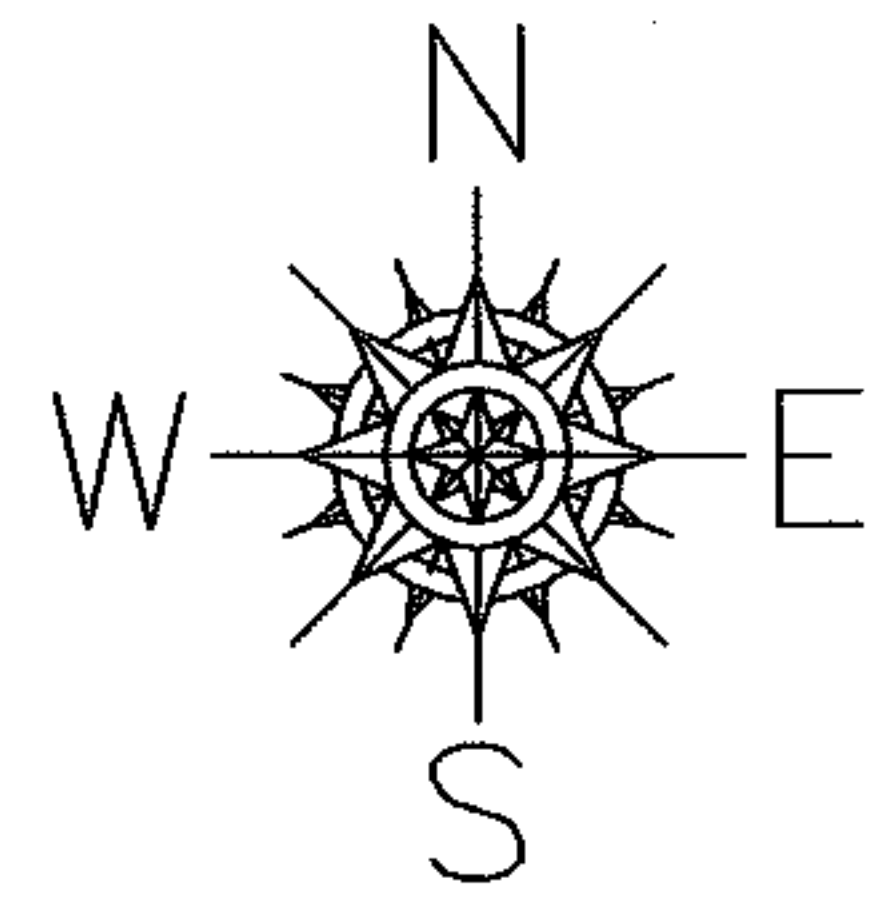


RASTER

PARENT PARCEL: 05-00-012-101-009, -044
CHILD PARCEL: 05-00-012-101-047 THRU -050
STARTING POINT: SOUTHEAST CORNER OF S/L 1 IN THOMPSON SUBD.

06-02105



SPLITS/DEEDS PROCESSED
LORAIN COUNTY TAX MAP DEPARTMENT
226 MIDDLE AVE. ELYRIA, OHIO

SURVEYED BY: CHARLES WARYU
CLOSURE: 0.00 : 10.000
MAP PAGE(S): 05-00-012-A
APPROVED BY: JAH DATE: 2-16-06
SCALE: 1" = 100 PRIOR INSTRUMENT: PV 20/29A