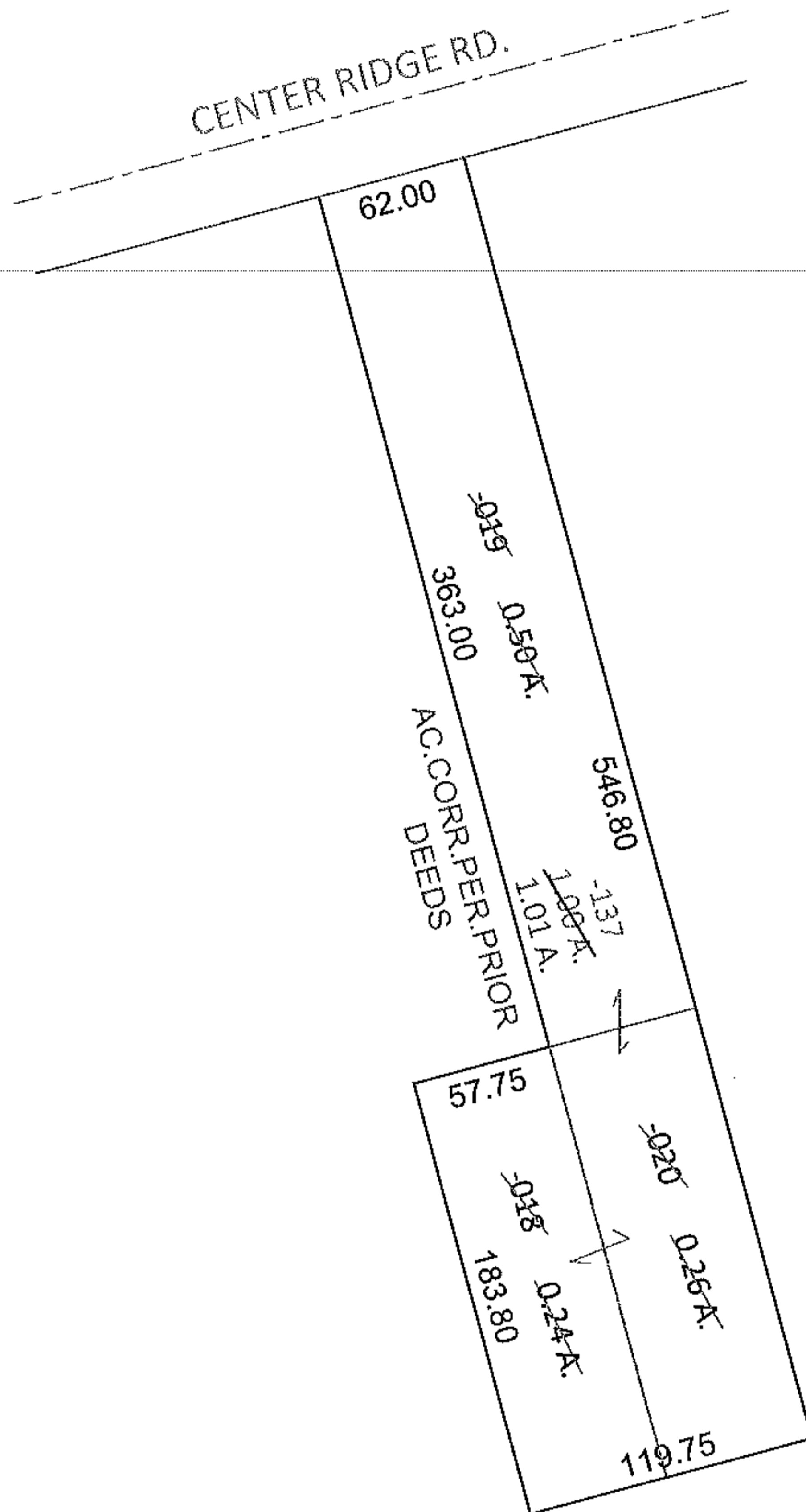
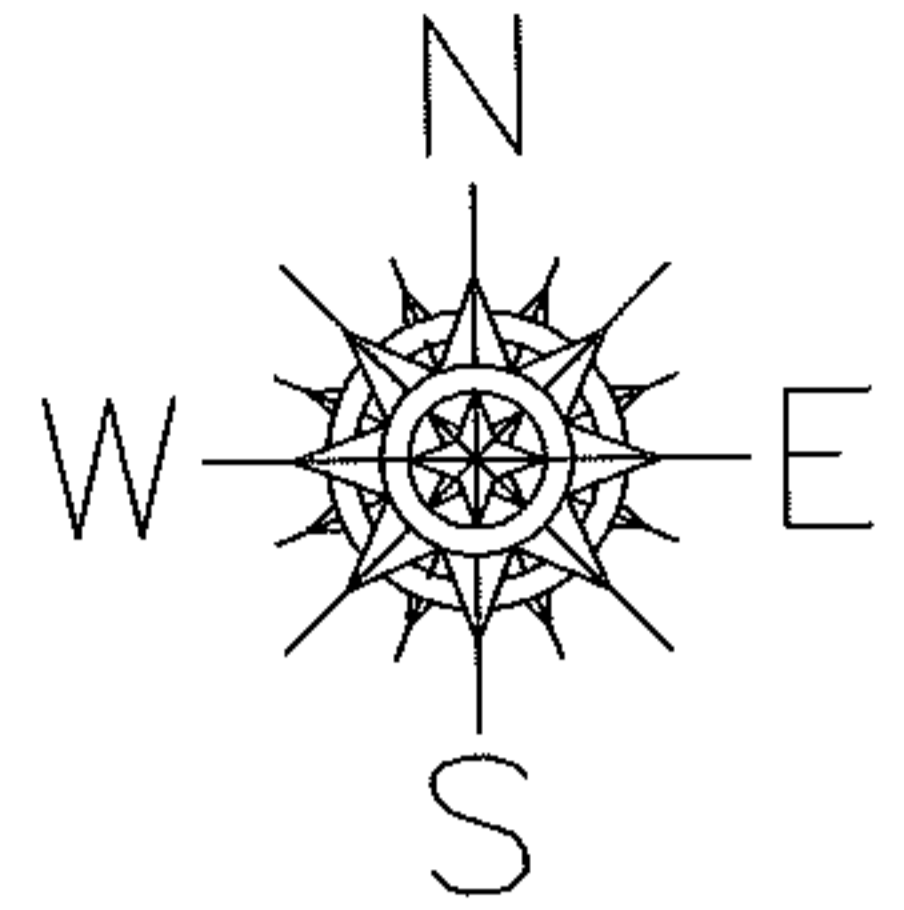
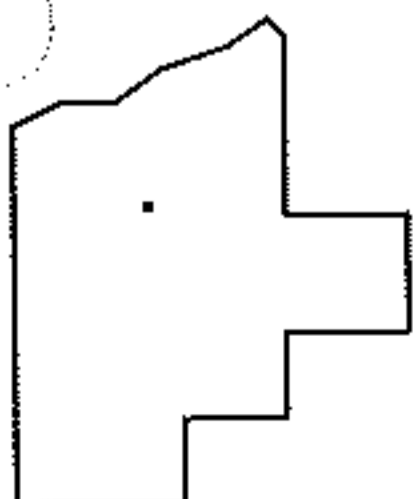


PARENT PARCEL: 07-00-028-103-018 THRU -020
 CHILD PARCEL: 07-00-028-103-137
 STARTING POINT: INTERSECTION OF SOUTH R.O.W. LINE OF CENTER RIDGE RD. AND
NORTHWEST CORNER OF LAND CONVEYED TO ANTON AND LIZZIE
SCHNITZLER (DV 175/342)

10-02104-C



COMBINATION
 PER PRIOR DEEDS
 OR 490/808
 DV 1356/994
 AND COURT CASE NO.
 10CV166173



SPLITS/DEEDS PROCESSED

LORAIN COUNTY TAX MAP DEPARTMENT
 226 MIDDLE AVE. ELYRIA, OHIO

SURVEYED BY: N/A
 CLOSURE: N/A
 MAP PAGE(S): 7-00-028-D
 APPROVED BY: RRM DATE: 9-30-10
 SCALE: 1"= 100 PRIOR INST.: SEE ABOVE