

RASTER

PARENT PARCEL: 18-00-021-112-050, -062, -063, -066, -076, -089, -103

CHILD PARCEL: XX-XX-XXX-XXX-XXX

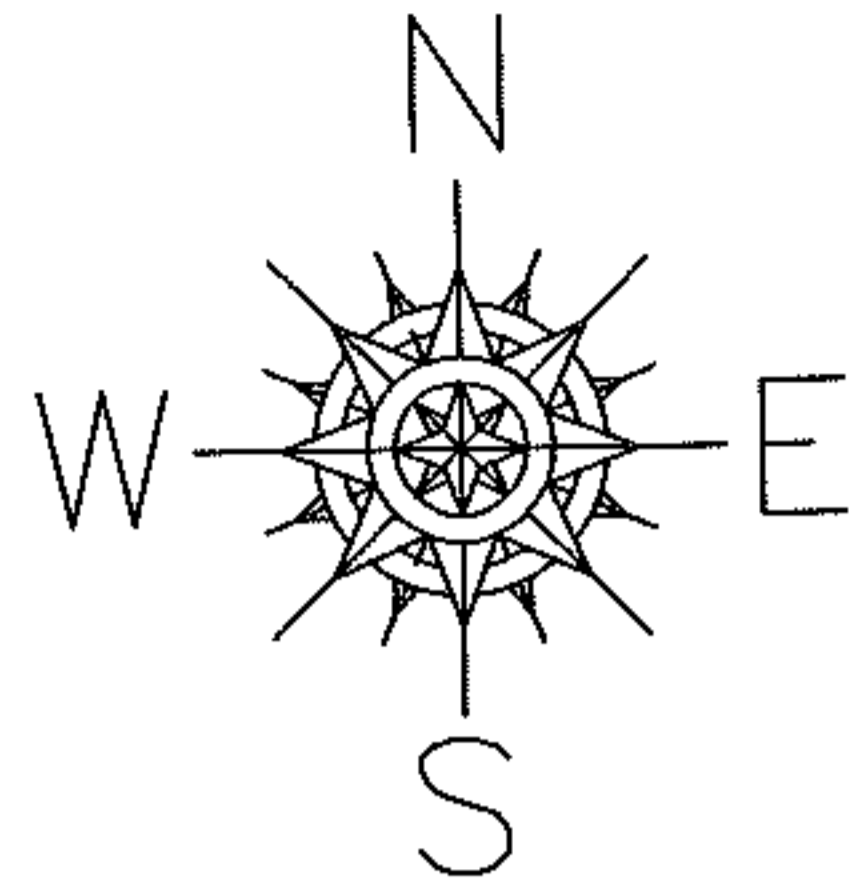
STARTING POINT: XXXXXX

10-02100-C

MAP CORRECTION

SUBLOT LINES WERE DRAWN INCORRECTLY SINCE 1896
PER ORIGINAL VILLAGE PLAT V. 14 PG. 30A

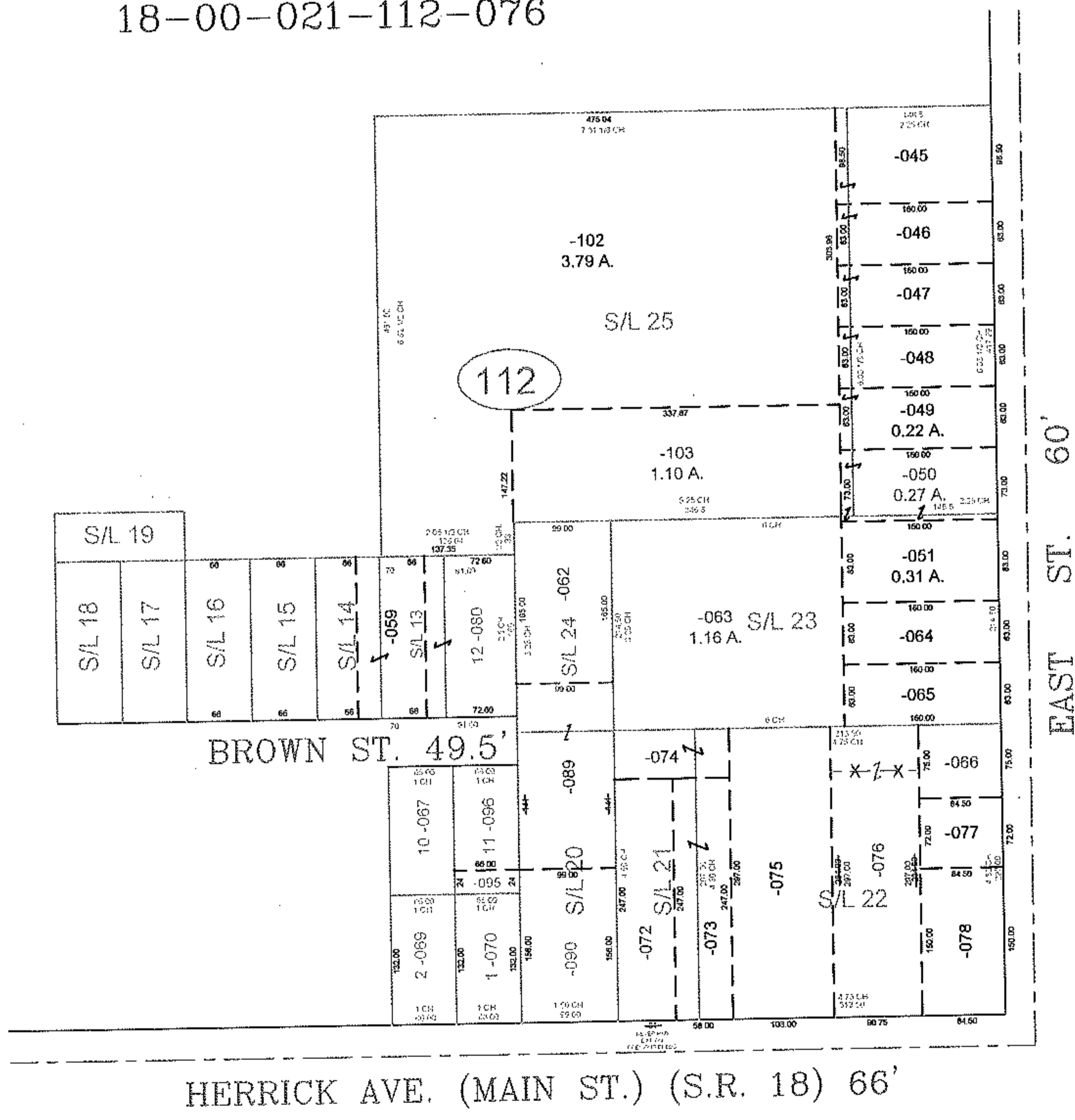
PROPERTY LINE CORRECTION



18-00-021-112-089

18-00-021-112-062

18-00-021-112-076



SPLITS/DEEDS PROCESSED
LORAIN COUNTY TAX MAP DEPARTMENT
 226 MIDDLE AVE. ELYRIA, OHIO

SURVEYED BY: NONE
 CLOSURE: NONE
 MAP PAGE(S): 18-00-021-D
 APPROVED BY: TJS DATE: 9/27/10
 SCALE: 1" = 200' PRIOR INSTRUMENT: DV XXXX/XXX