

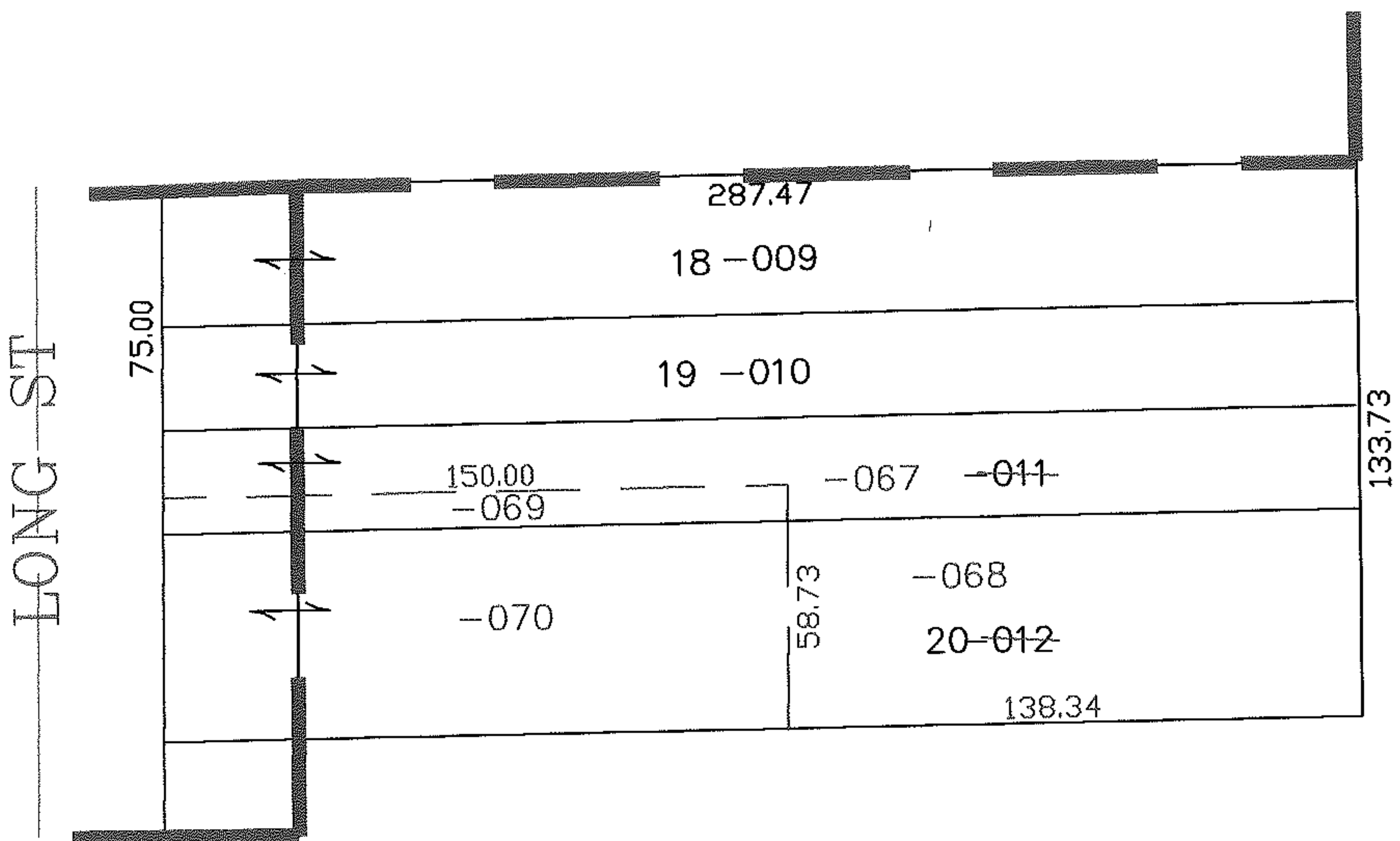
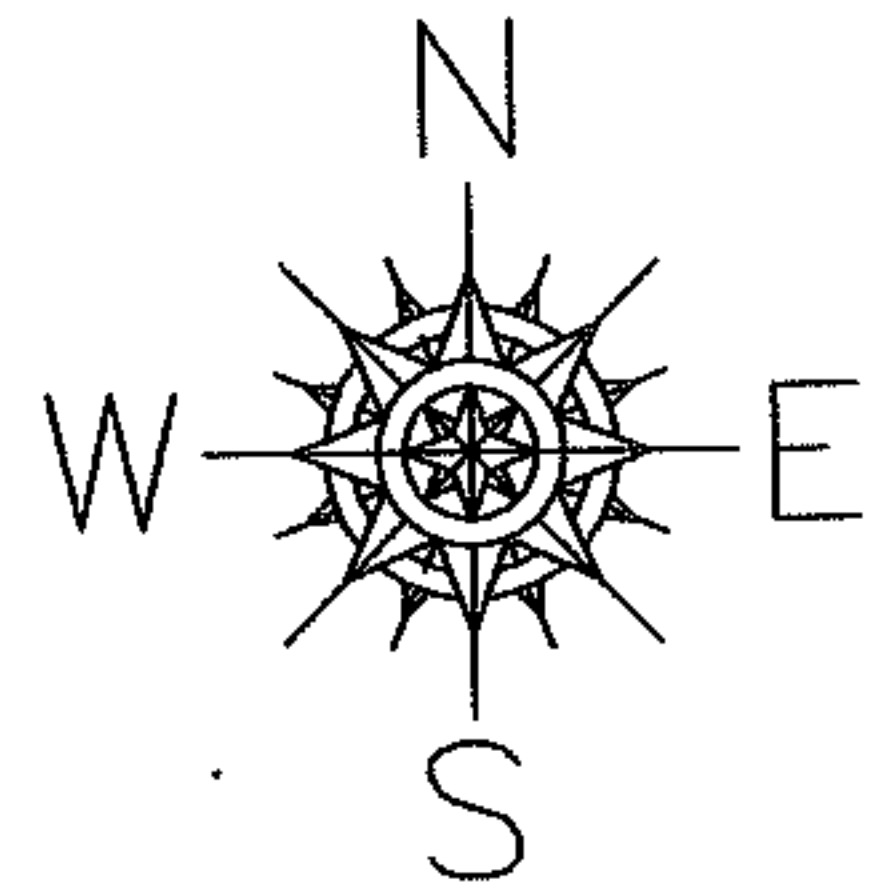
RASTER

PARENT PARCEL: 05-00-018-104-009, -010, -011, -012

CHILD PARCEL: 05-00-018-104-067 THRU -070

STARTING POINT: NORTHWEST CORNER OF S/L 12 OF CG ZIMMERMAN SUBD.

06-02095



SPLITS/DEEDS PROCESSED

LORAIN COUNTY TAX MAP DEPARTMENT  
226 MIDDLE AVE. ELYRIA, OHIO

SURVEYED BY: TIMOTHY REILY

CLOSURE: 0.00 : 10.000

MAP PAGE(S): 05-00-018-B

APPROVED BY: JAH DATE: 2-7-06

SCALE: 1" = 100 PRIOR INSTRUMENT: 20050097187