

RASTER

PARENT PARCEL: ADD TO DUPLICATE  
CHILD PARCEL: 02-01-003-124-033  
STARTING POINT: CL OF BROADWAY & CL OF E. 9TH ST.

10-2081-X

ADD TO DUPLICATE

02-01-003-124-033

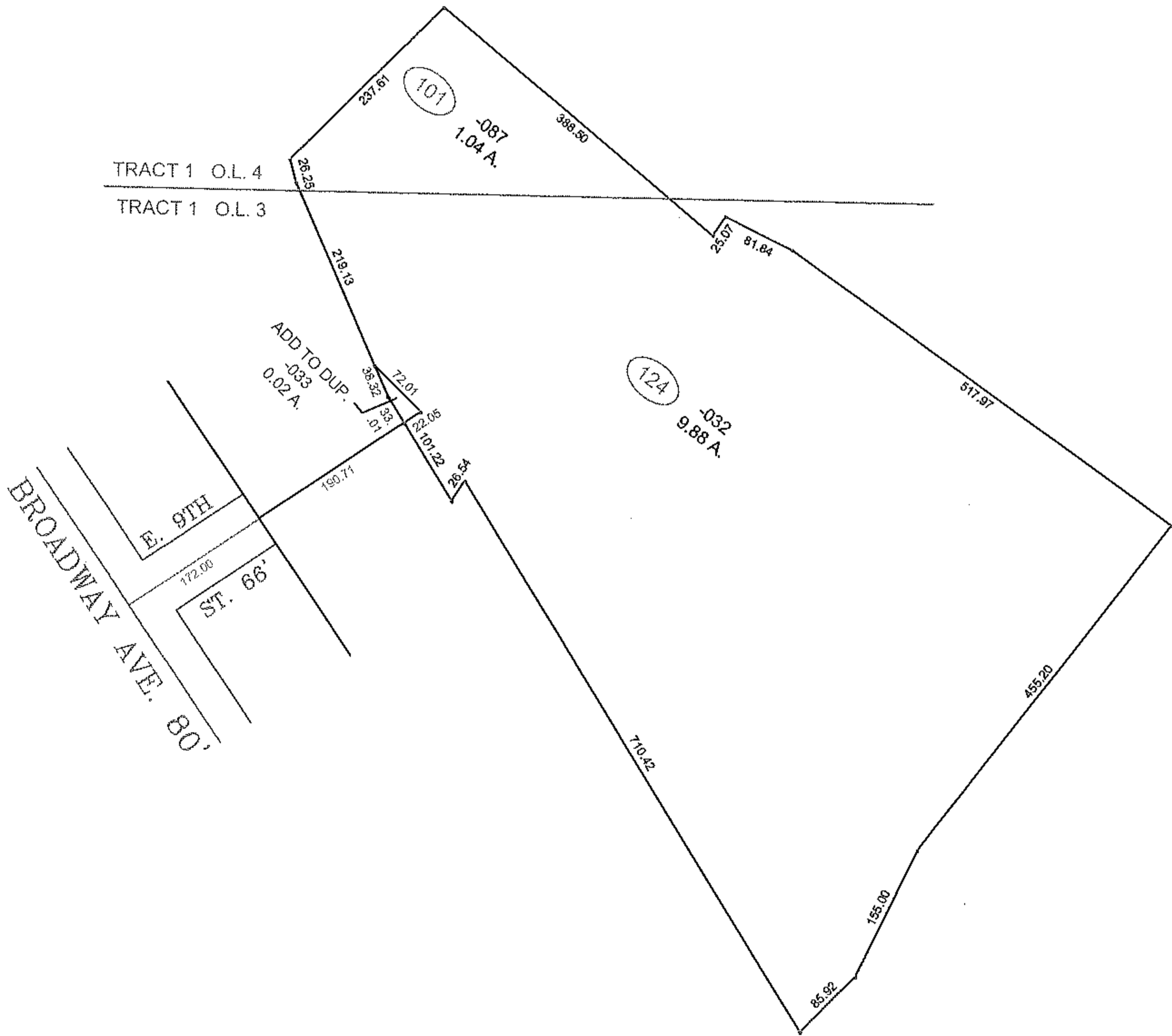
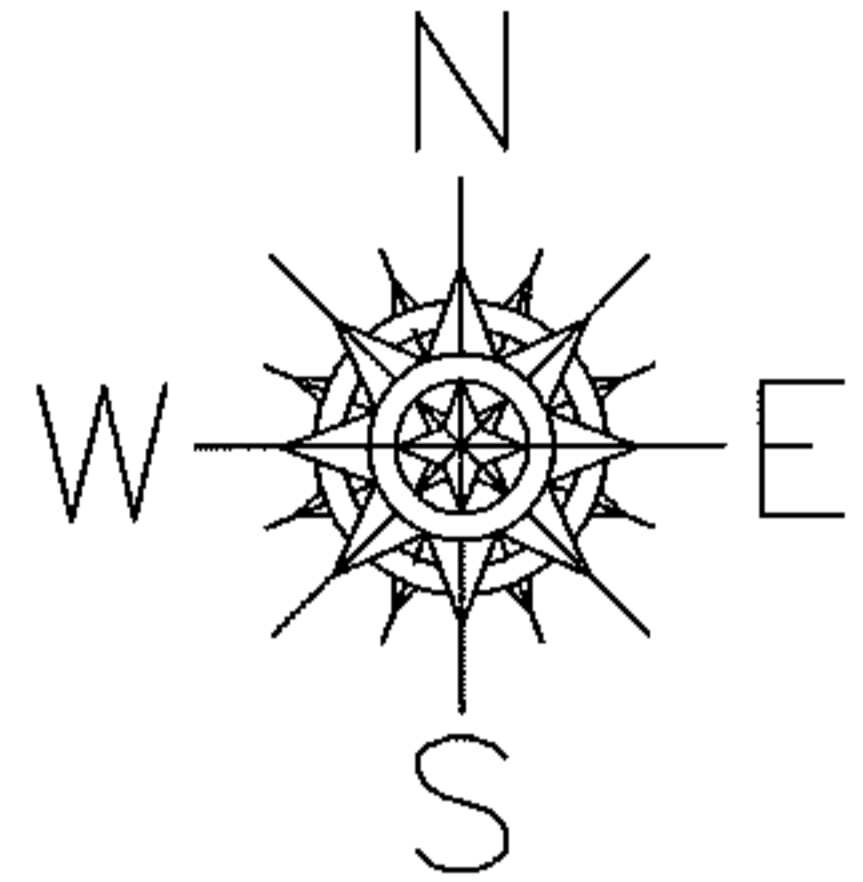
0.02 A.

PER DV 276/402

J.H. WERNER, LOUIS C. & GEORGE J. REGER

NEVER DEEDED THIS PIECE OUT

THIS IS AN EXCEPTION ON DV 1343/89



SPLITS/DEEDS PROCESSED

LORAIN COUNTY TAX MAP DEPARTMENT  
226 MIDDLE AVE. ELYRIA, OHIO

SURVEYED BY: MCGLINCHY & ASSOC.  
CLOSURE: 0.01 : 10,000  
MAP PAGE(S): 02-01-003-C  
APPROVED BY: TJS DATE: 8/30/10  
SCALE: 1"= 200 PRIOR INST.: DV 276/402