

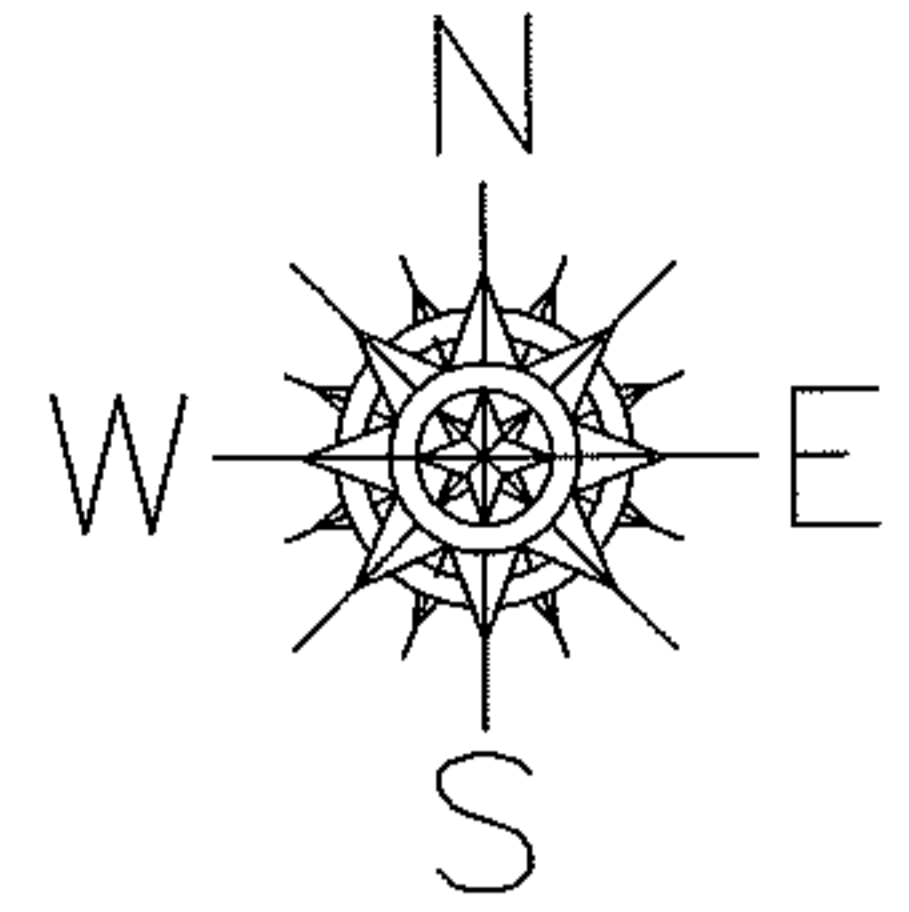
RASTER

PARENT PARCEL: 18-00-027-114-071

10-02076-C

CHILD PARCEL:

STARTING POINT: INTERSECTION OF EAST LINE OF PROSPECT ST. AND NORTH LINE OF FORTH ST.



DEPTH CORRECTION

18-00-027-114-071

96.10 X 113.70

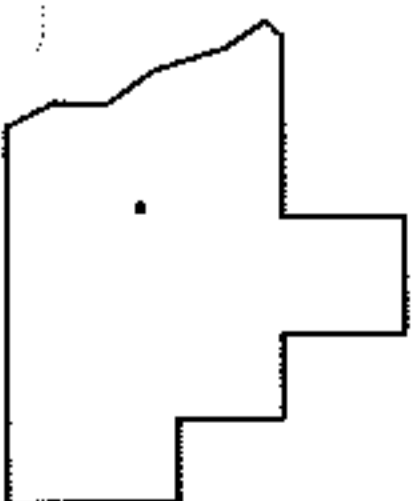
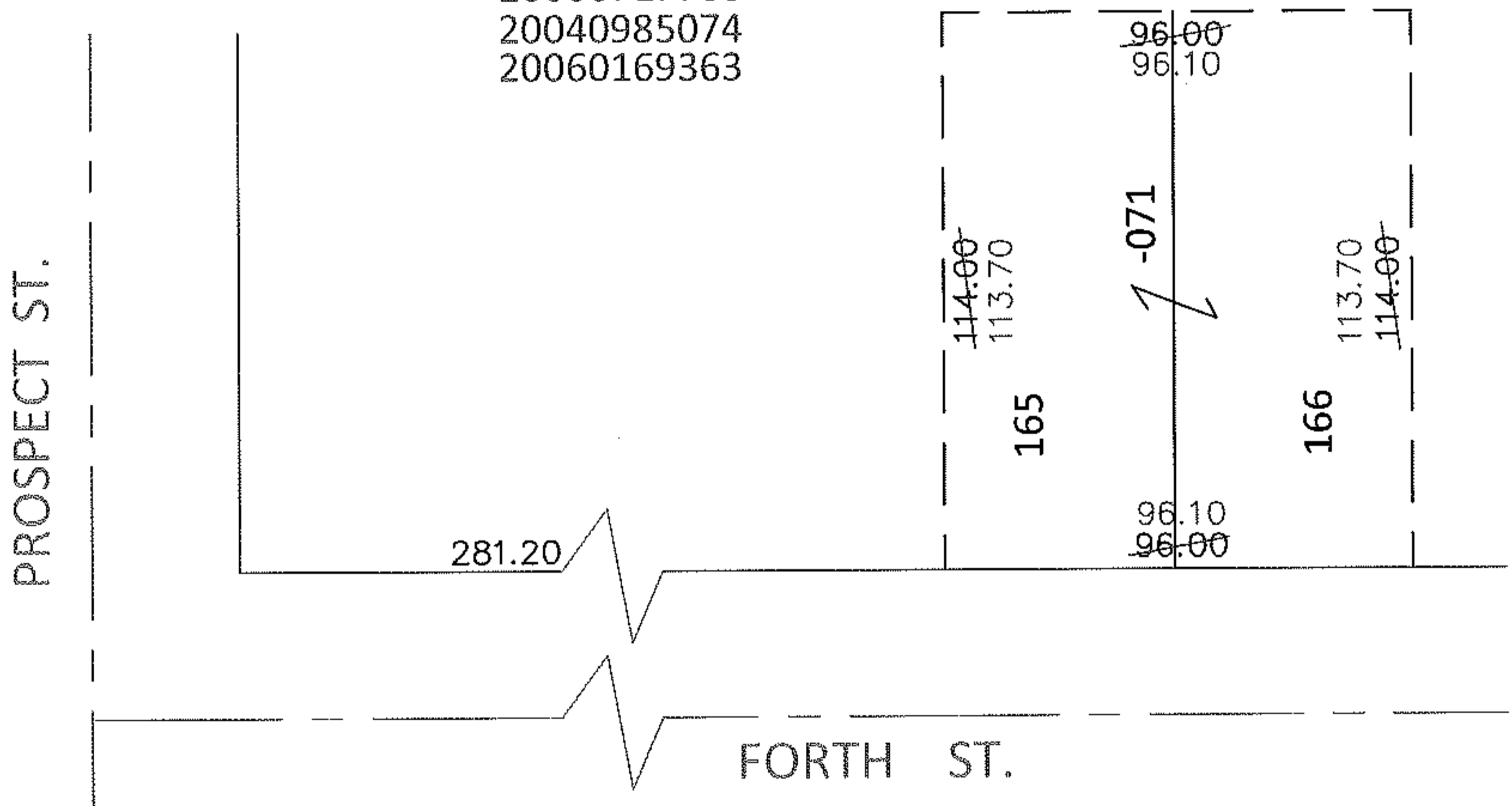
~~96.10 X 114~~

PER COURT CASE 10CV167767  
AND PRIOR DEEDS

20000717703

20040985074

20060169363



SPLITS/DEEDS PROCESSED

LORAIN COUNTY TAX MAP DEPARTMENT  
226 MIDDLE AVE. ELYRIA, OHIO

SURVEYED BY: N/A

CLOSURE: N/A

MAP PAGE(S): 18-00-027-D

APPROVED BY: RRM DATE: 8-24-10

SCALE: 1" = 50' PRIOR INST.: SEE ABOVE