

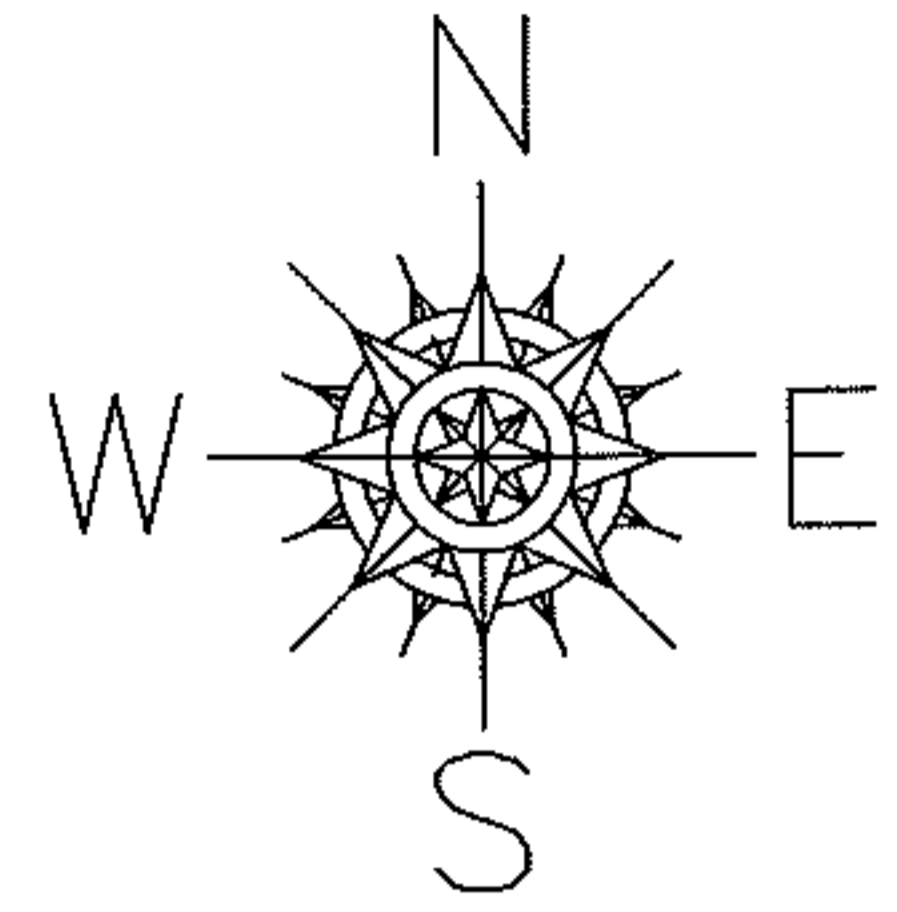
RASTER

PARENT PARCEL: 06-22-012-101-002, -021

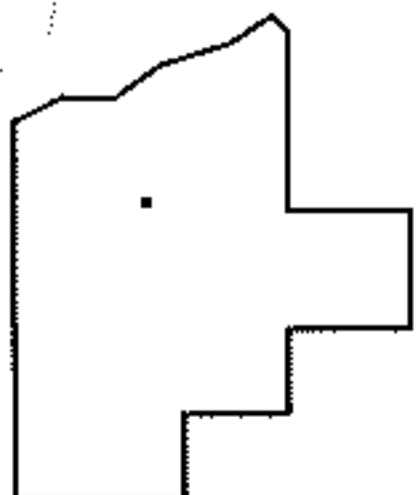
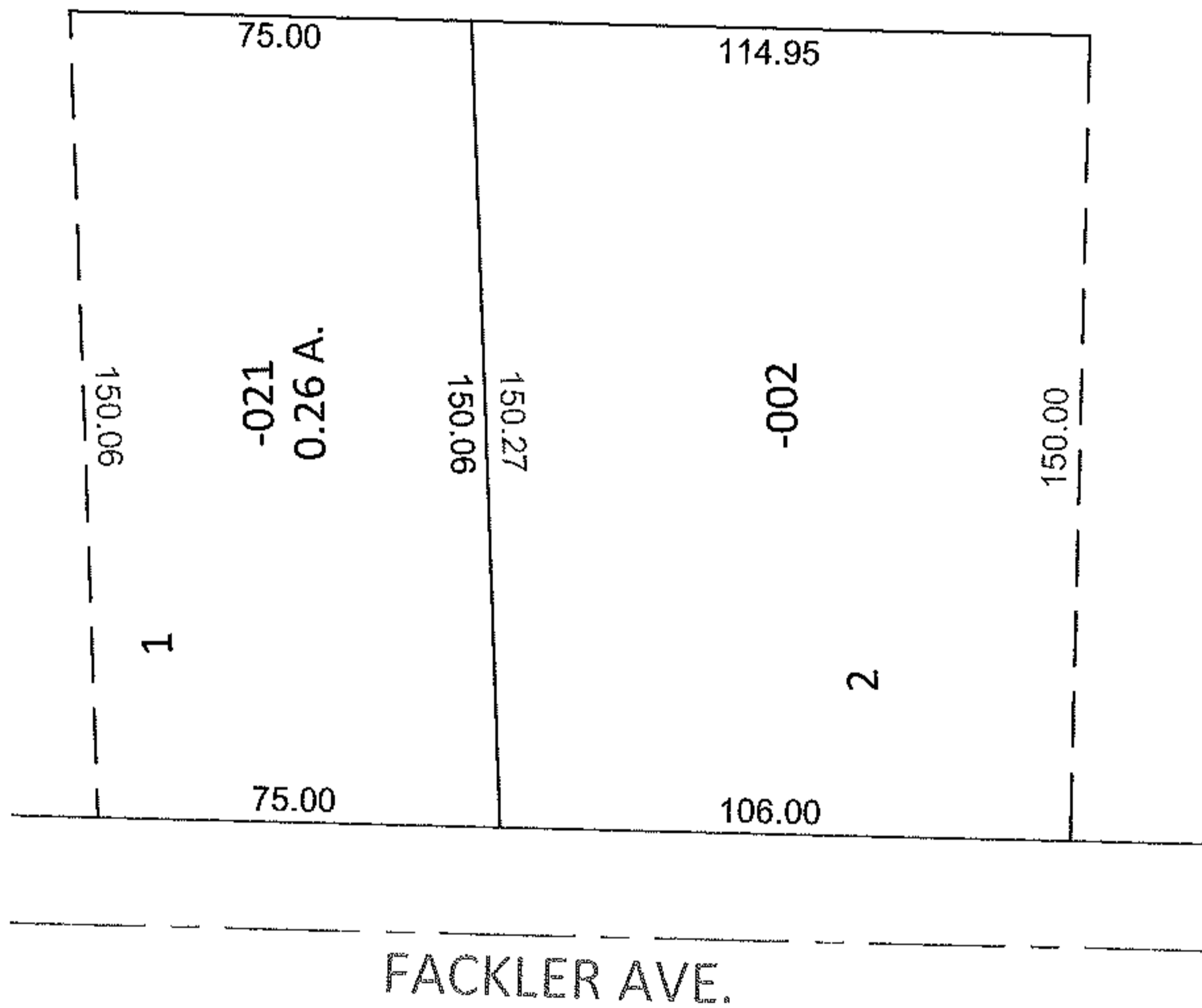
CHILD PARCEL: \_\_\_\_\_

10-02074-C

STARTING POINT: SOUTHWEST CORNER OF S/L 2 IN FACKLER ALLOT.(VOL.6 PG.5)



MAP CORRECTION ONLY



SPLITS/DEEDS PROCESSED

LORAIN COUNTY TAX MAP DEPARTMENT  
226 MIDDLE AVE. ELYRIA, OHIO

SURVEYED BY: N/A

CLOSURE: .00:10,000

MAP PAGE(S): 6-11

APPROVED BY: RRM DATE: 8-23-10

SCALE: 1" = 50' PRIOR INST.: 20070188042