

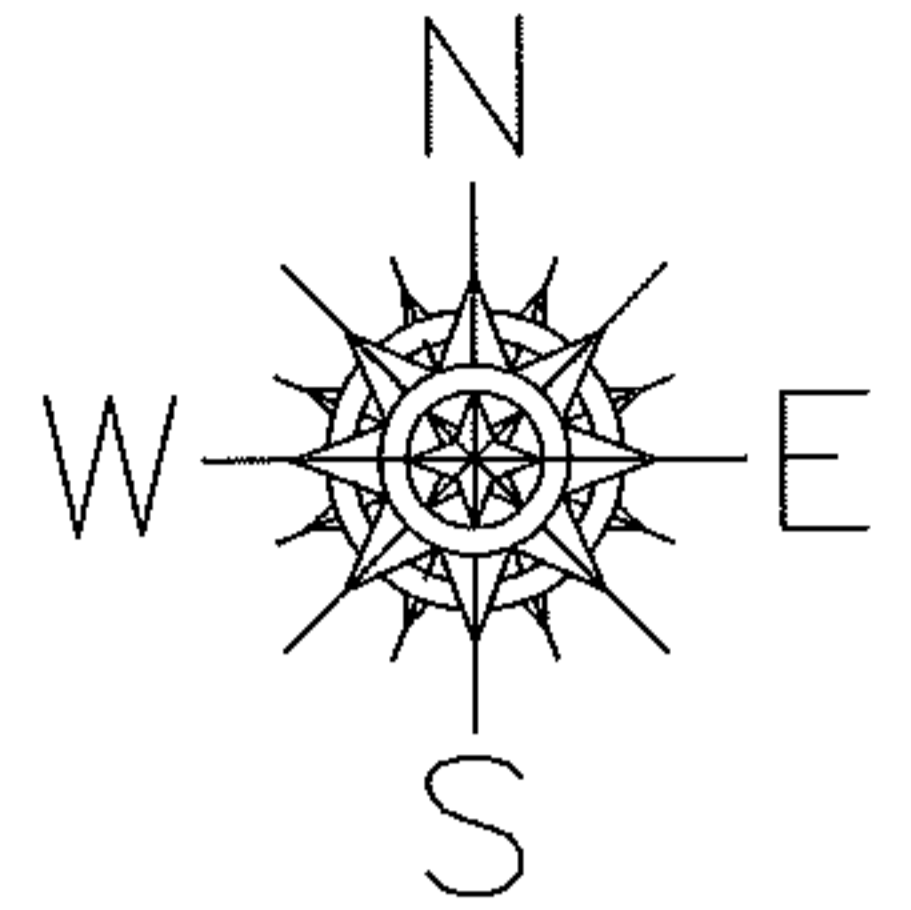
RASTER

PARENT PARCEL: 07-00-044-103-001

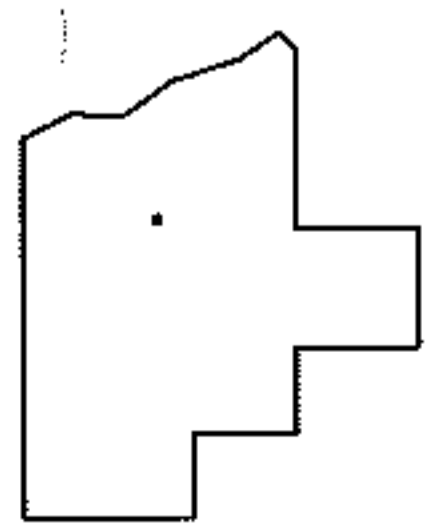
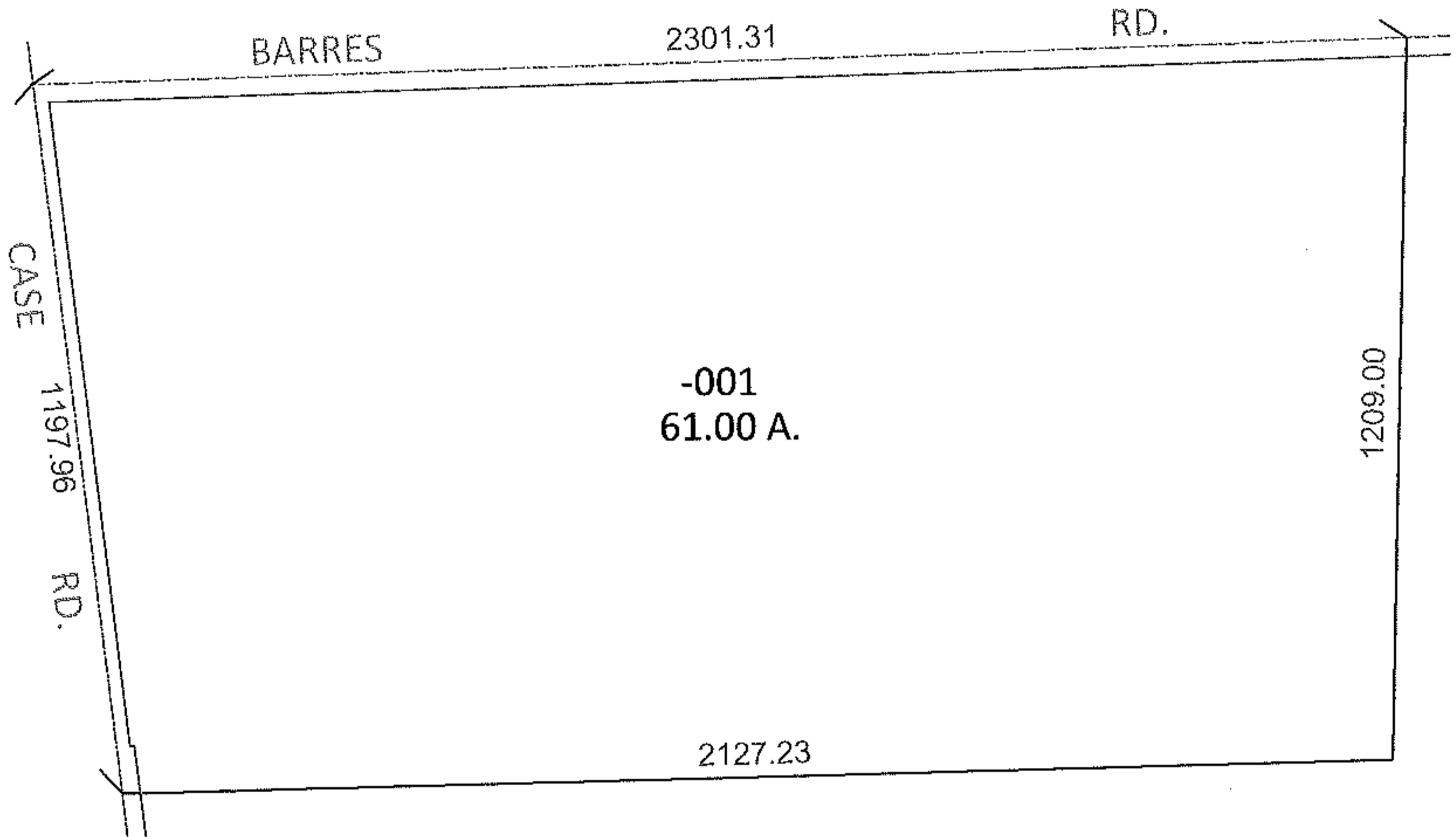
CHILD PARCEL:

STARTING POINT: NORTHWEST CORNER OF O.L.44

10-02072-C



MAP CORRECTION ONLY



SPLITS/DEEDS PROCESSED

LORAIN COUNTY TAX MAP DEPARTMENT  
226 MIDDLE AVE. ELYRIA, OHIO

SURVEYED BY: E.B. DUDLEY  
 CLOSURE: .01:10,000  
 MAP PAGE(S): 7-00-044-A, 7-A  
 APPROVED BY: RRM DATE: 8-23-10  
 SCALE: 1"= 400 PRIOR INST.: 20100330394