

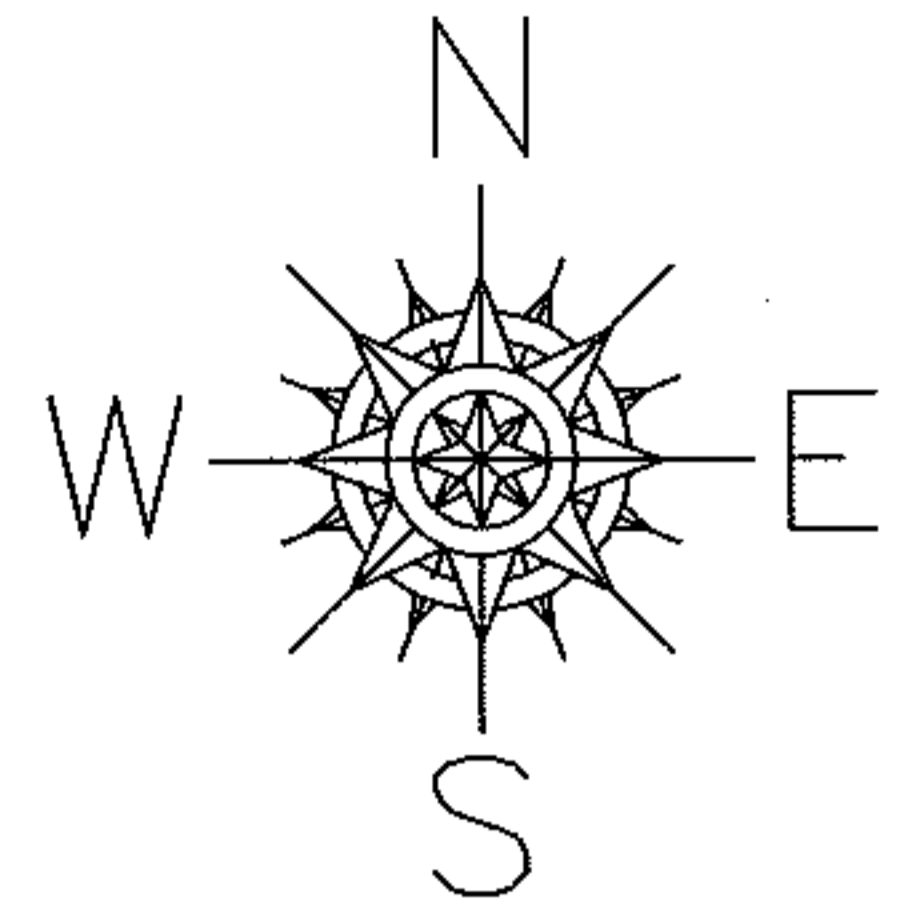
RACON

PARENT PARCEL: 07-00-024-101-054

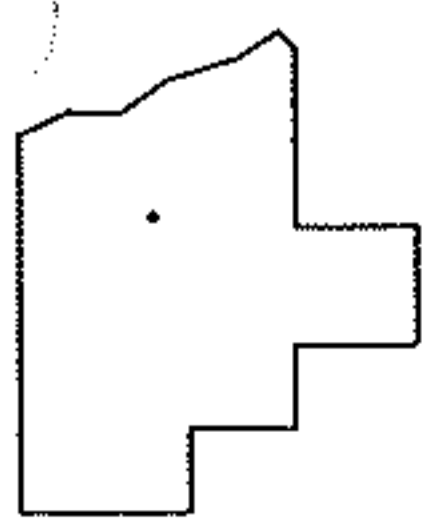
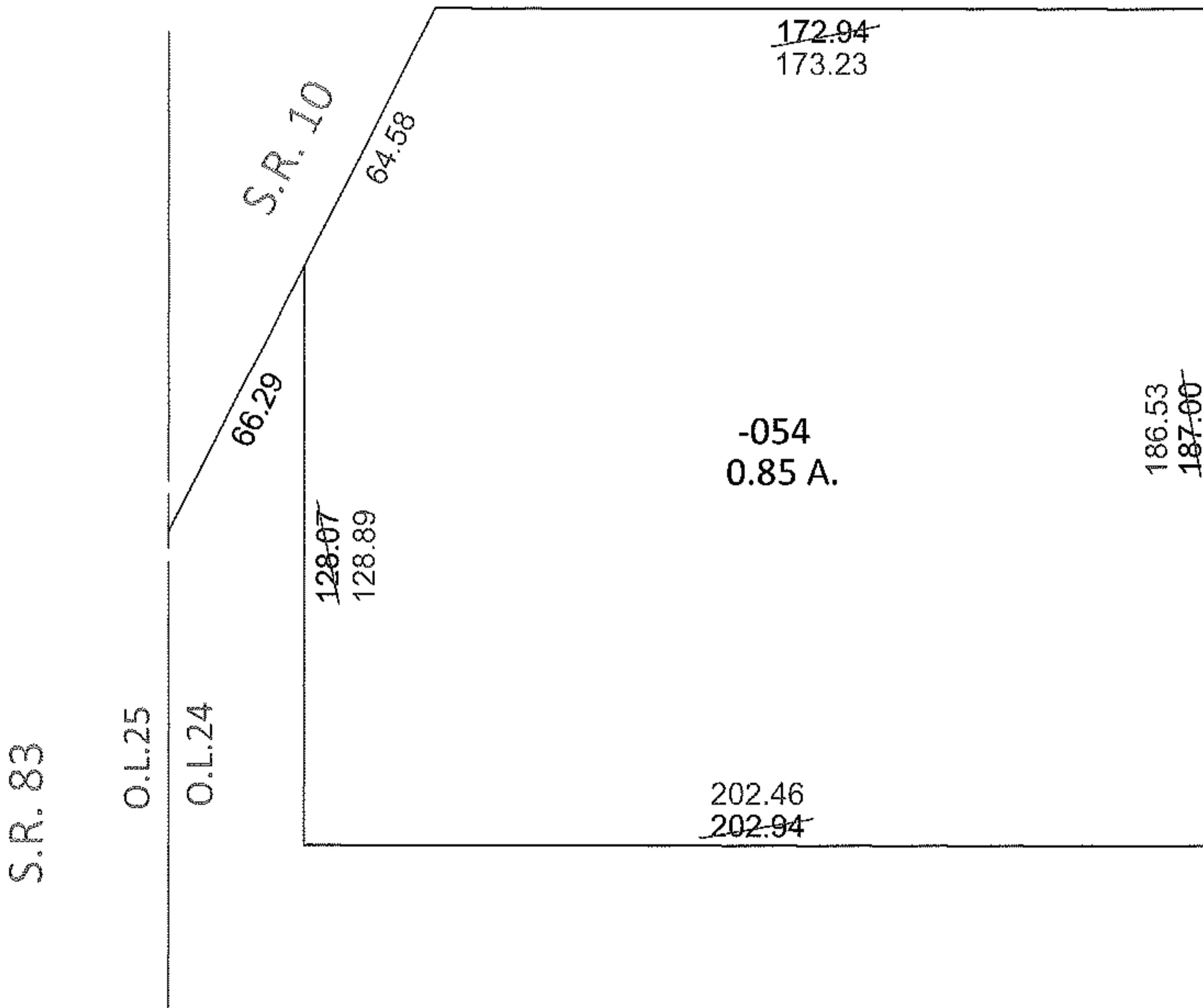
10-02070-D

CHILD PARCEL:

STARTING POINT: INTERSECTION OF WEST LINE OF O.L.24 AND SOUTH LINE OF S.R. 10



MAP CORRECTION ONLY
SURVEY BY TREVOR A. BIXLER



SPLITS/DEEDS PROCESSED

LORAIN COUNTY TAX MAP DEPARTMENT
226 MIDDLE AVE. ELYRIA, OHIO

SURVEYED BY: TREVOR A. BIXLER

CLOSURE: .01:10,000

MAP PAGE(S): 7-00-024-C

APPROVED BY: RRM DATE: 9-3-10

SCALE: 1"= 50' PRIOR INST.: 20090309046