

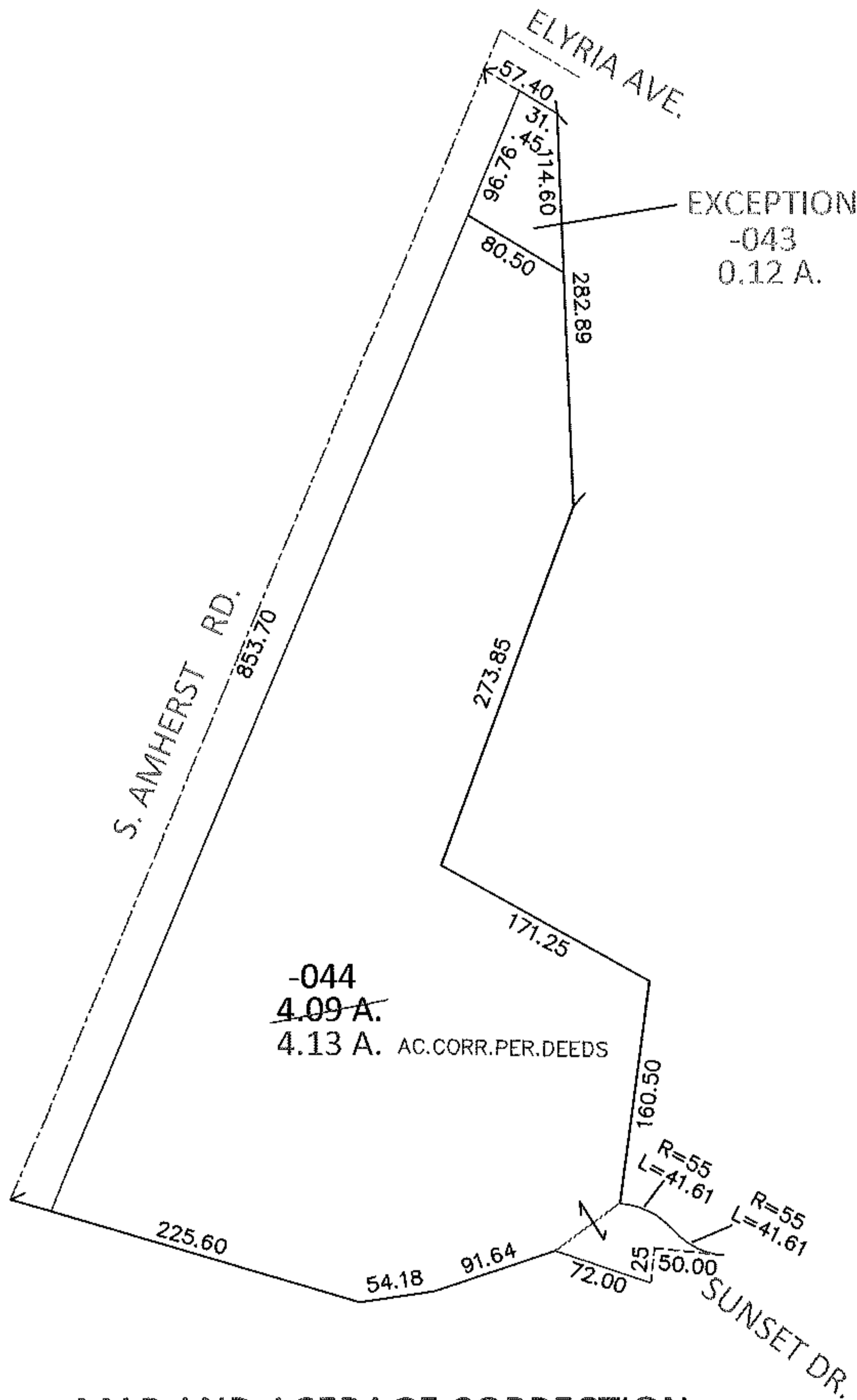
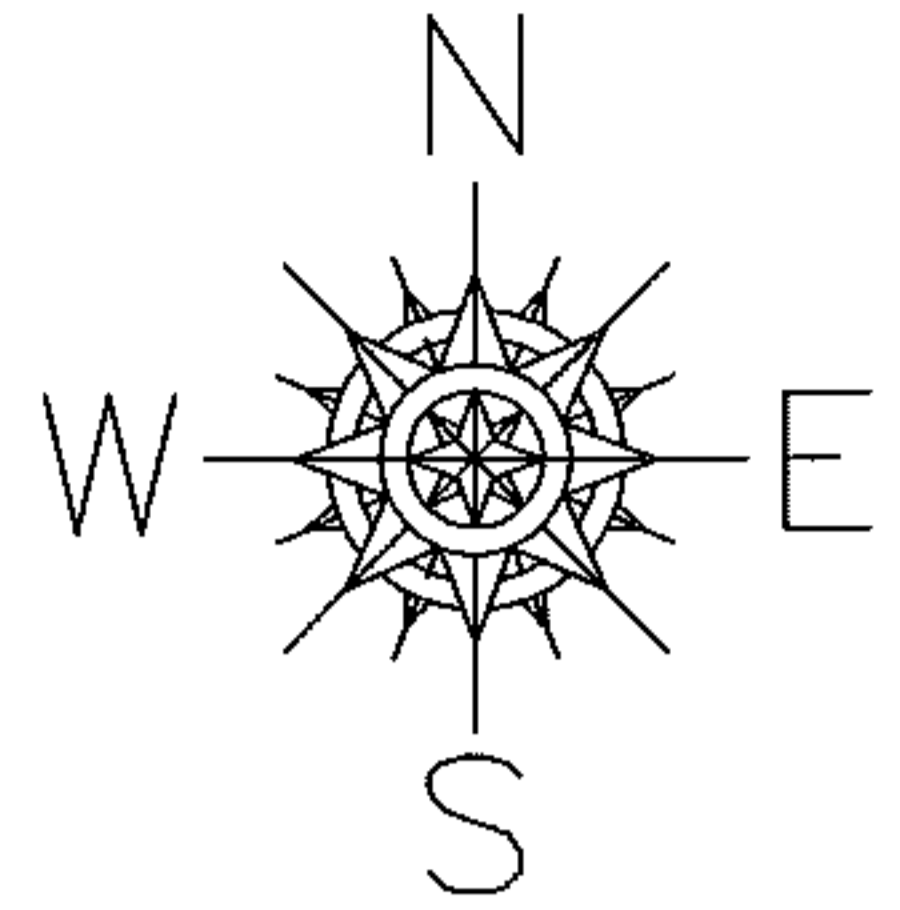
RASPER

PARENT PARCEL: 05-00-024-122-044

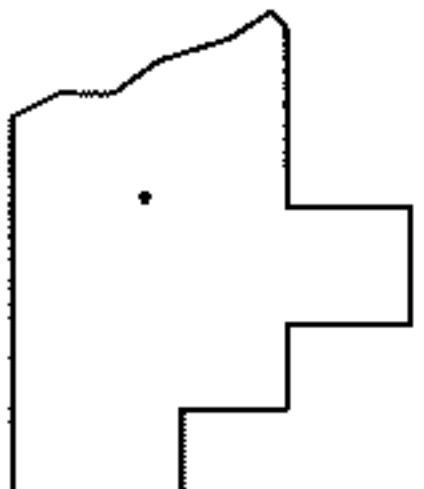
CHILD PARCEL:

10-02069-C

STARTING POINT: SOUTHERLY LINE OF ELYRIA AVE. AND NORTHWEST CORNER OF LAND TO ALICE TEDROW(DV 299/14)



MAP AND ACERAGE CORRECTION
PER PRIOR DV 701/143



SPLITS/DEEDS PROCESSED

LORAIN COUNTY TAX MAP DEPARTMENT
226 MIDDLE AVE. ELYRIA, OHIO

SURVEYED BY: N/A

CLOSURE: N/A

MAP PAGE(S): 5-00-024-A

APPROVED BY: RRM DATE: 8-18-10

SCALE: 1" = 150 PRIOR INST.: DV 701/143