

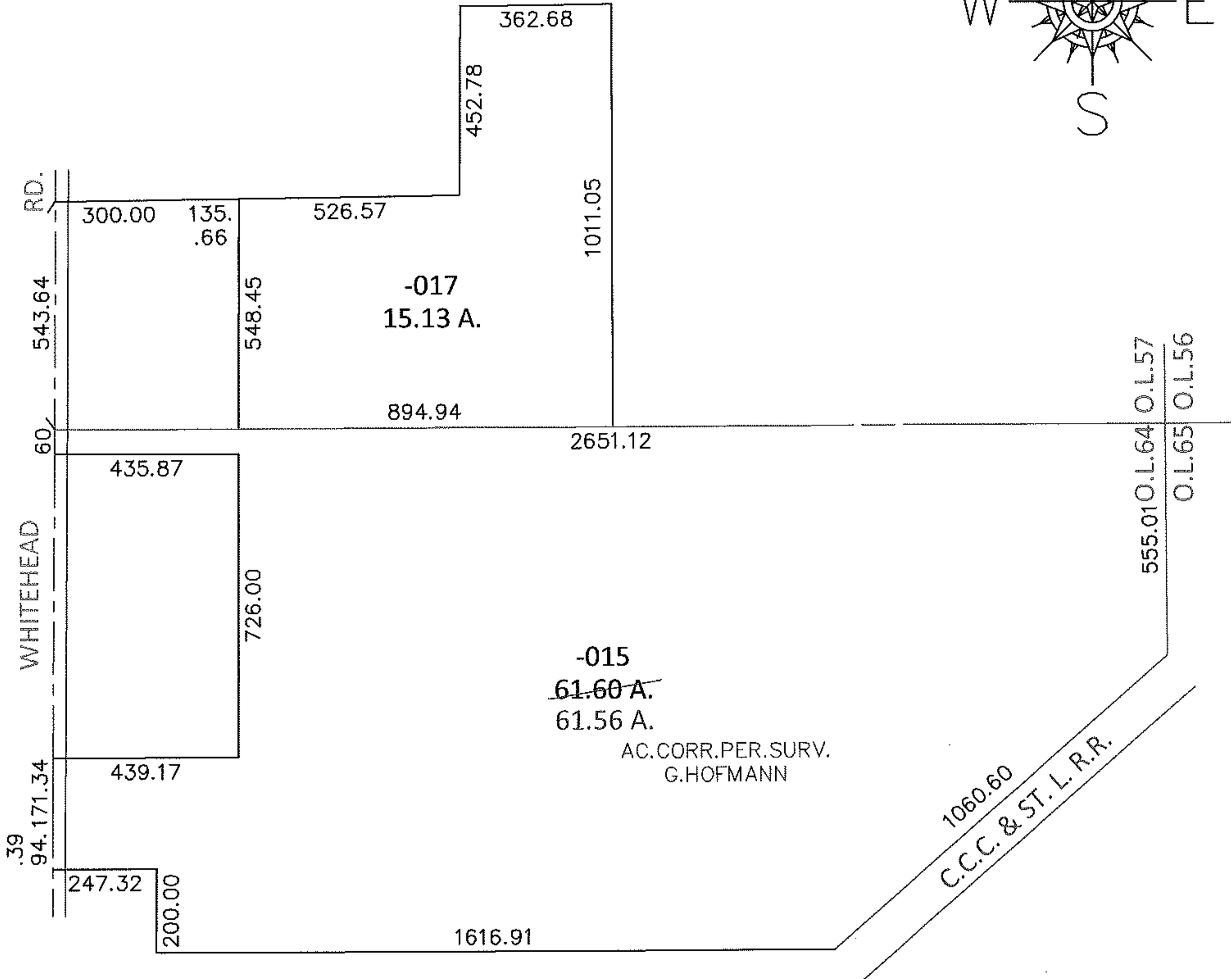
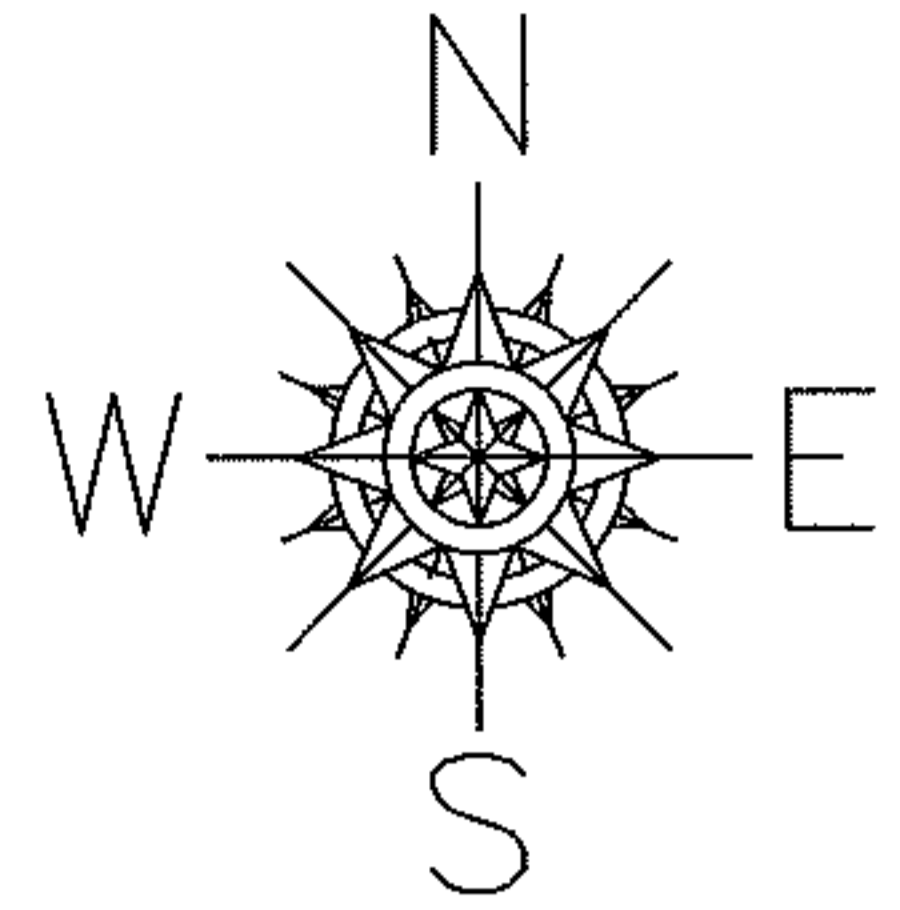
Page

PARENT PARCEL: 15-00-057-000-017, 15-00-064-000-015

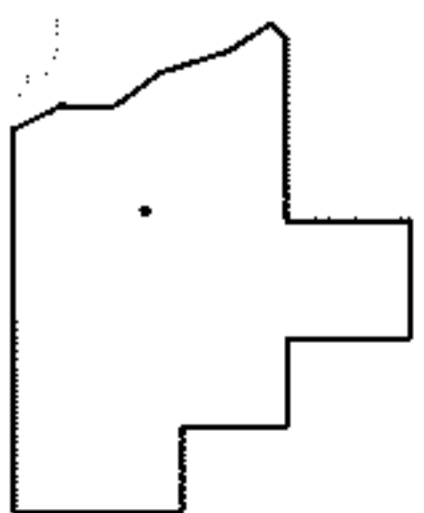
10-02056-D

CHILD PARCEL:

STARTING POINT: INTERSECTION OF C/L OF WHITEHEAD RD. AND SOUTHWEST CORNER OF O.L.57



\*20040040047  
\*20040040053



**SPLITS/DEEDS PROCESSED**

LORAIN COUNTY TAX MAP DEPARTMENT  
226 MIDDLE AVE. ELYRIA, OHIO

SURVEYED BY: GEORGE HOFMANN  
CLOSURE: .01:10,000  
MAP PAGE(S): 15-F  
APPROVED BY: RRM DATE: 7-23-10  
SCALE: 1" = 400 PRIOR INST.: \*SEE ABOVE\*