

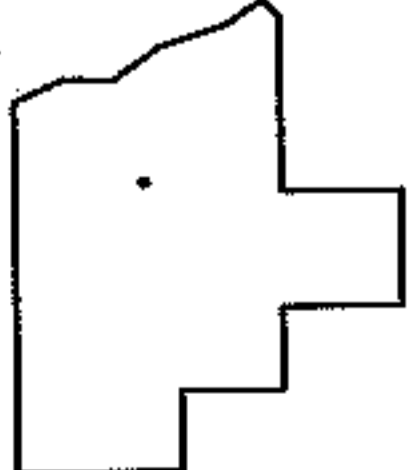
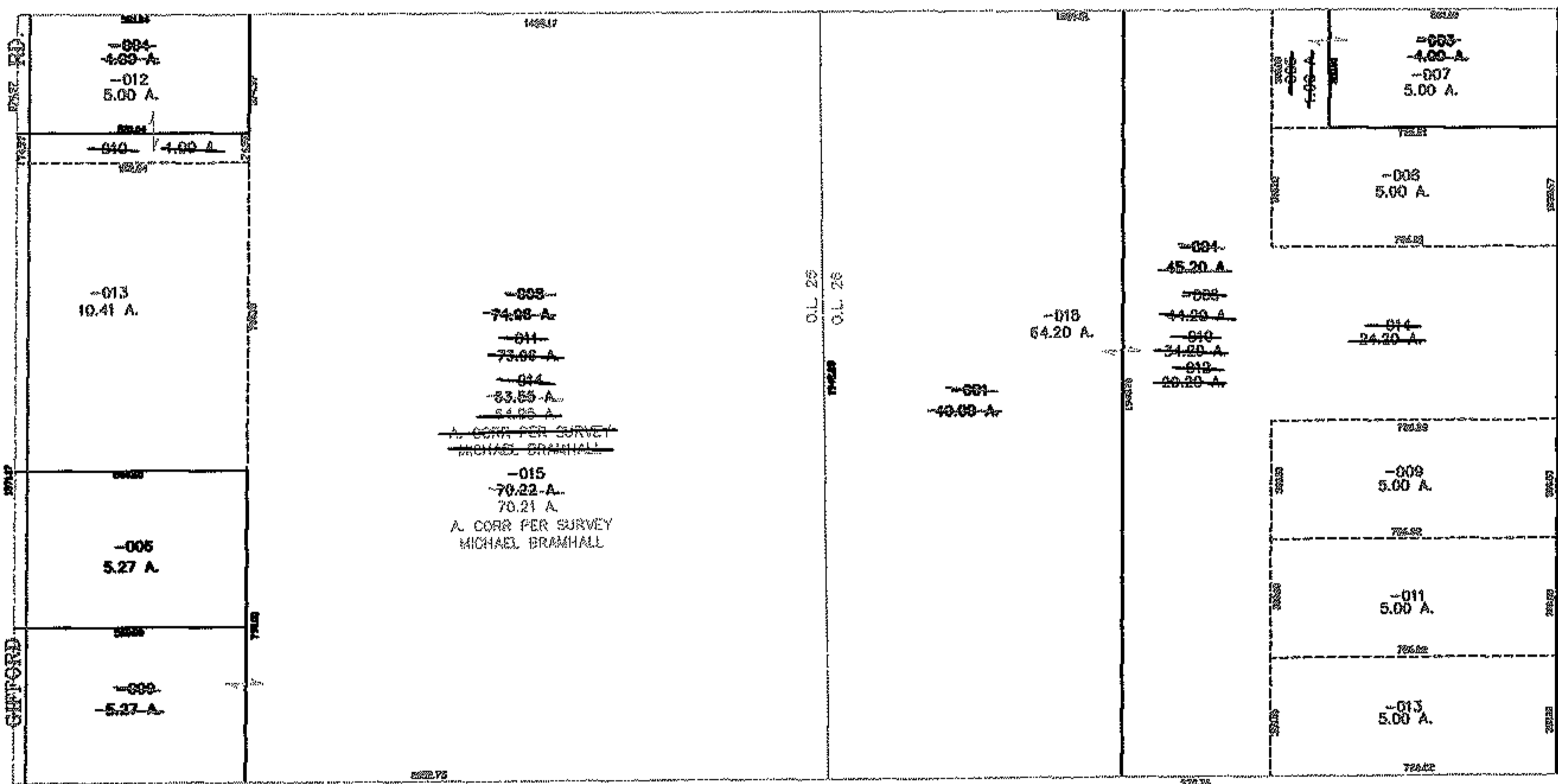
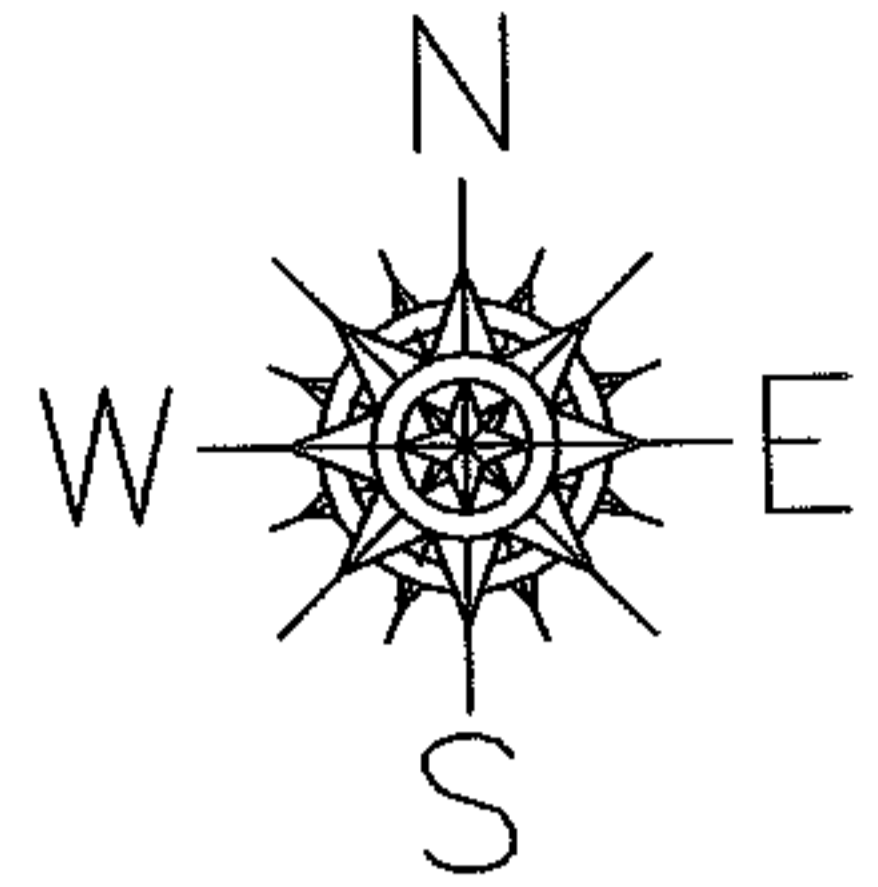
RASTER

PARENT PARCEL: 13-09-026-000-004, -001, -003 13-09-025-000-008, -004, -009

CHILD PARCEL: 13-09-026-000-005 THRU -015 13-09-025-000-010 THRU -015

STARTING POINT: SOUTHEAST CORNER OF O.L. 25 & O.L. 26

05-02051



SPLITS/DEEDS PROCESSED

LORAIN COUNTY TAX MAP DEPARTMENT  
226 MIDDLE AVE. ELYRIA, OHIO

SURVEYED BY: MICHAEL BRAMHALL

CLOSURE: 0.00 : 10.000

MAP PAGE(S): 13-H

APPROVED BY: JAH DATE: 12-2-05

SCALE: 1" = 600 PRIOR INSTRUMENT: 2005084008