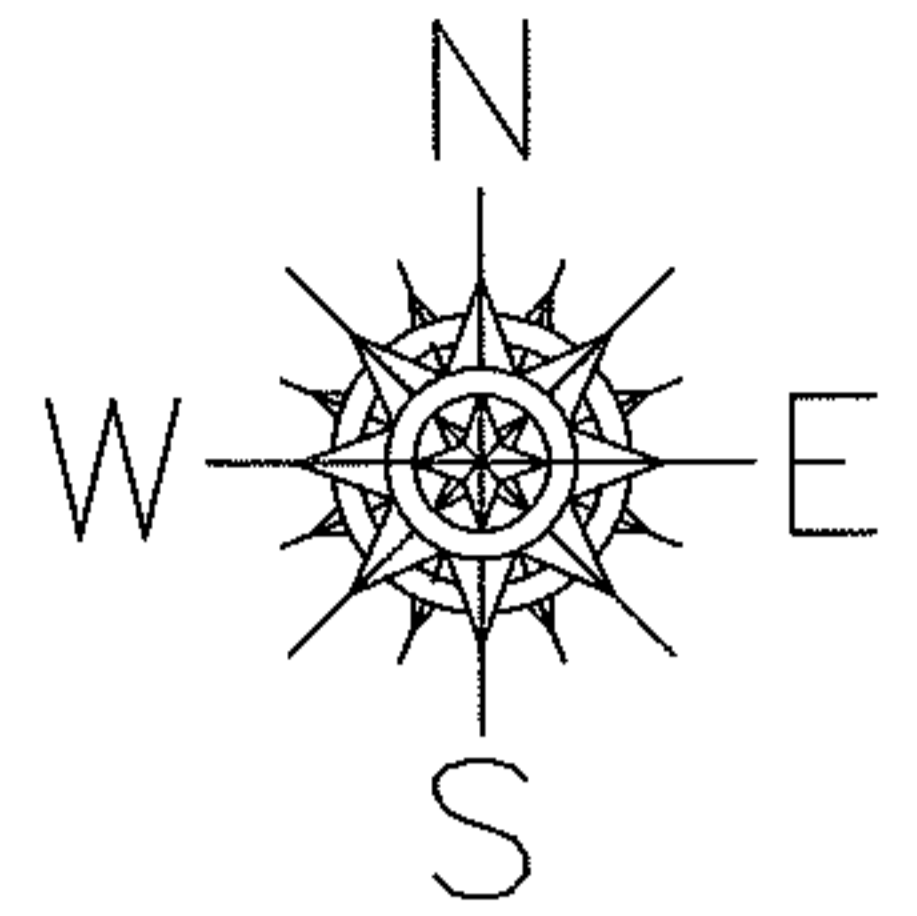


PARENT PARCEL: 06-26-096-000-009, -010

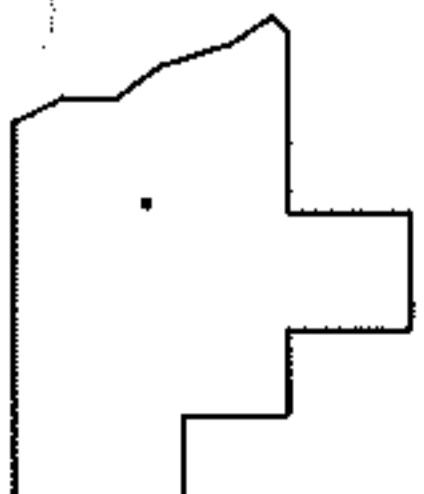
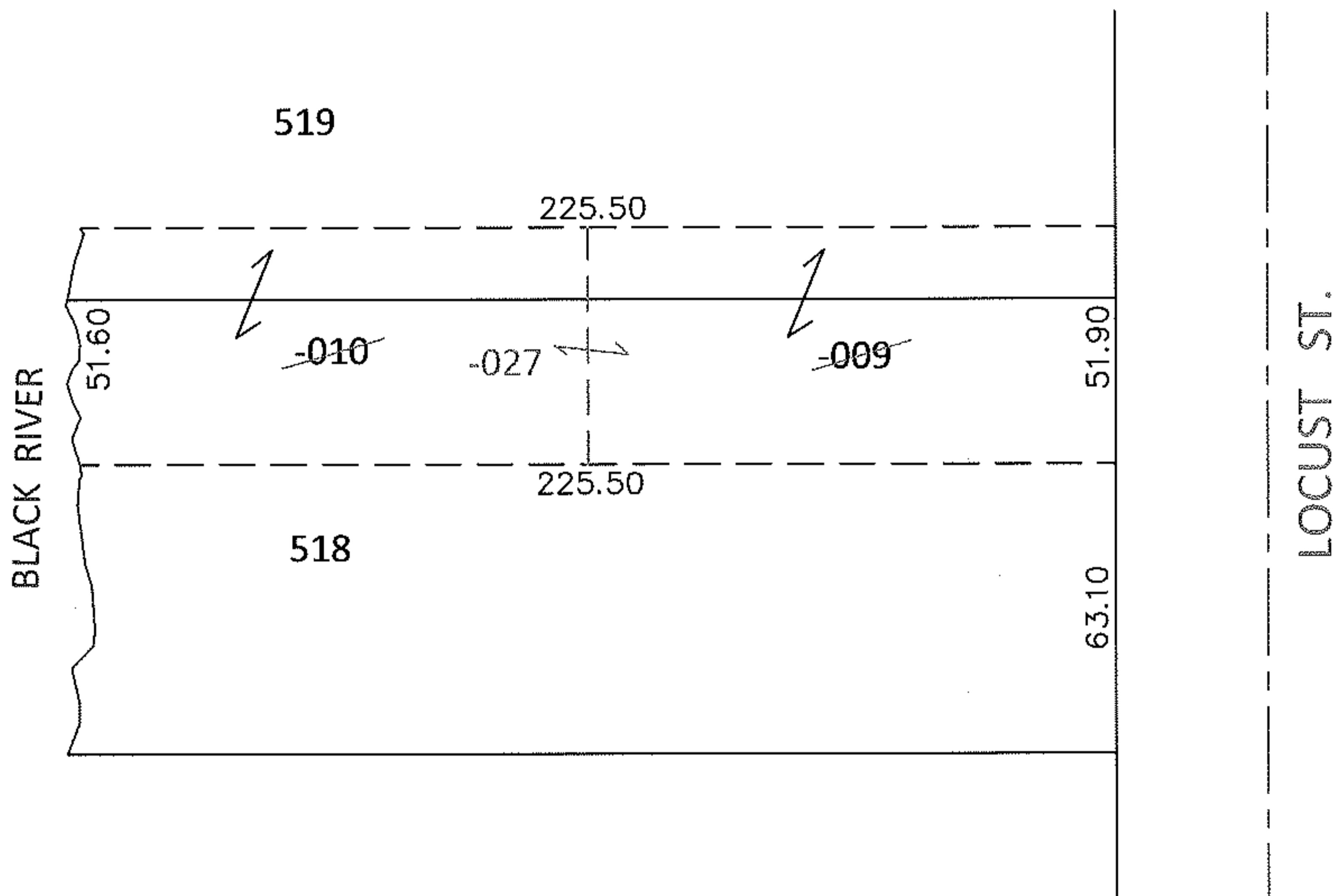
CHILD PARCEL: 06-26-096-000-027

10-02042-C

STARTING POINT: SOUTHEAST CORNER OF S/L 518 IN HEMAN ELY'S ADDITION(VOL.1 PG.35)



COMBINATION
PER THIS AND PRIOR DEED
19990586500



SPLITS/DEEDS PROCESSED

LORAIN COUNTY TAX MAP DEPARTMENT
226 MIDDLE AVE. ELYRIA, OHIO

SURVEYED BY:	N/A
CLOSURE:	N/A
MAP PAGE(S):	6-102
APPROVED BY:	RRM
DATE:	11-5-10
SCALE:	1" = 50'
PRIOR INST.:	19990586500