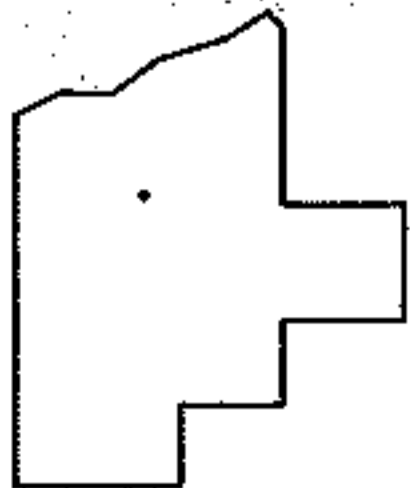
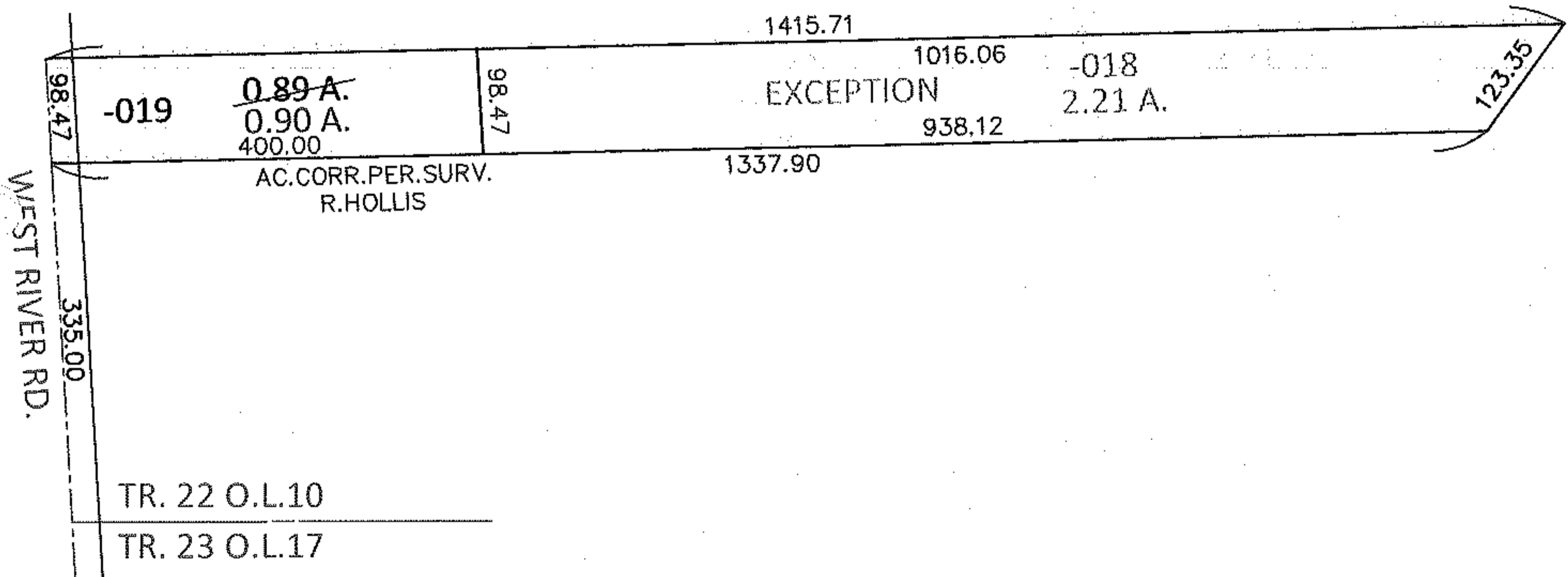
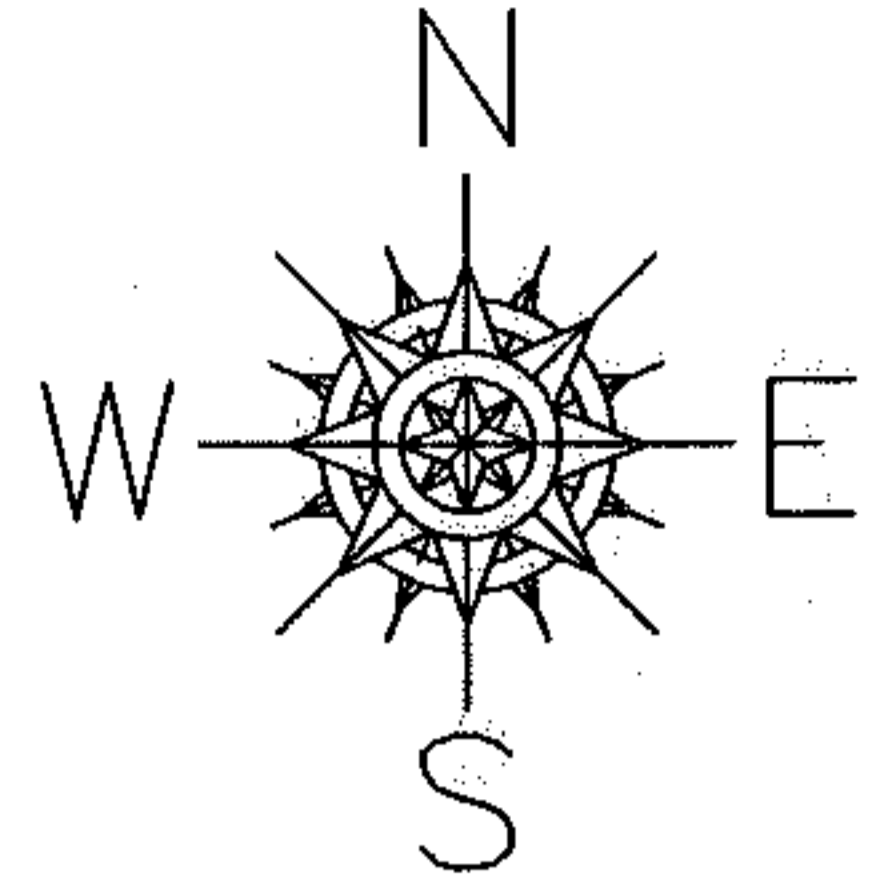


PARENT PARCEL: 06-22-010-000-019

10-02041-A

CHILD PARCEL:

STARTING POINT: INTERSECTION OF C/L OF WEST RIVER RD. AND SOUTH LINE OF O.L.10



**SPLITS/DEEDS PROCESSED**

LORAIN COUNTY TAX MAP DEPARTMENT  
226 MIDDLE AVE. ELYRIA, OHIO

SURVEYED BY: RAY E. HOLLIS  
 CLOSURE: .01:10,000  
 MAP PAGE(S): 6-11  
 APPROVED BY: RRM DATE: 6-21-10  
 SCALE: 1"= 200 PRIOR INST.: 19990619221