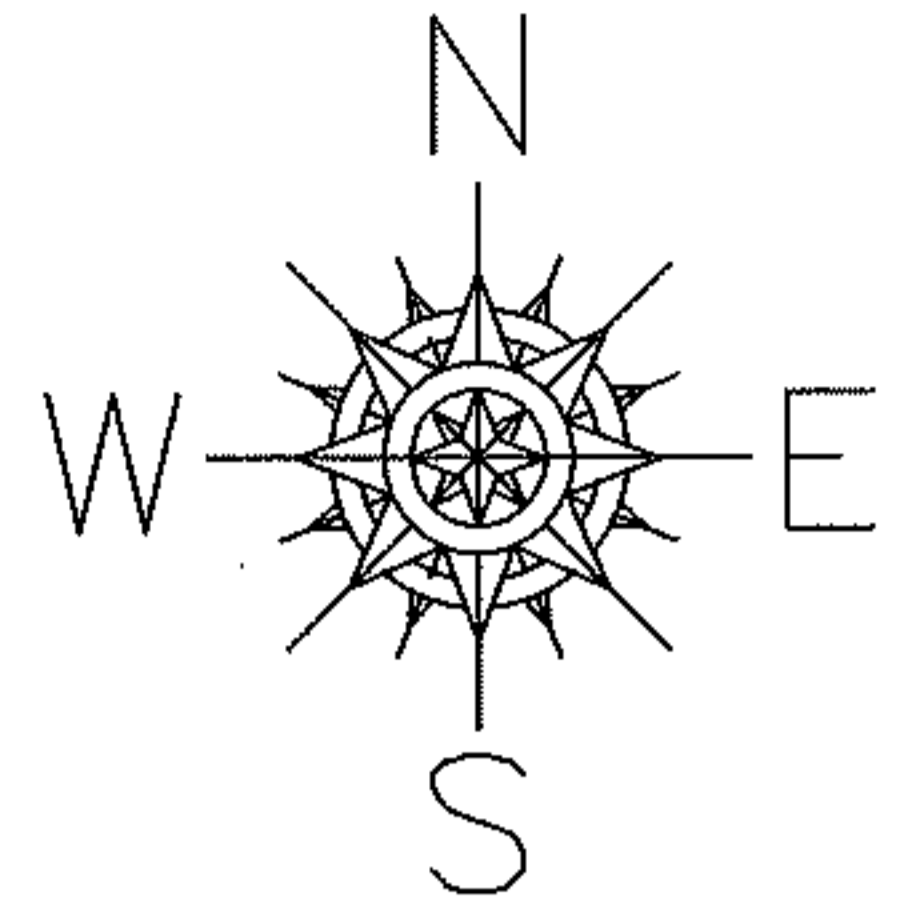


PARENT PARCEL: 05-00-097-103-109

CHILD PARCEL: 05-00-097-103-136,-137

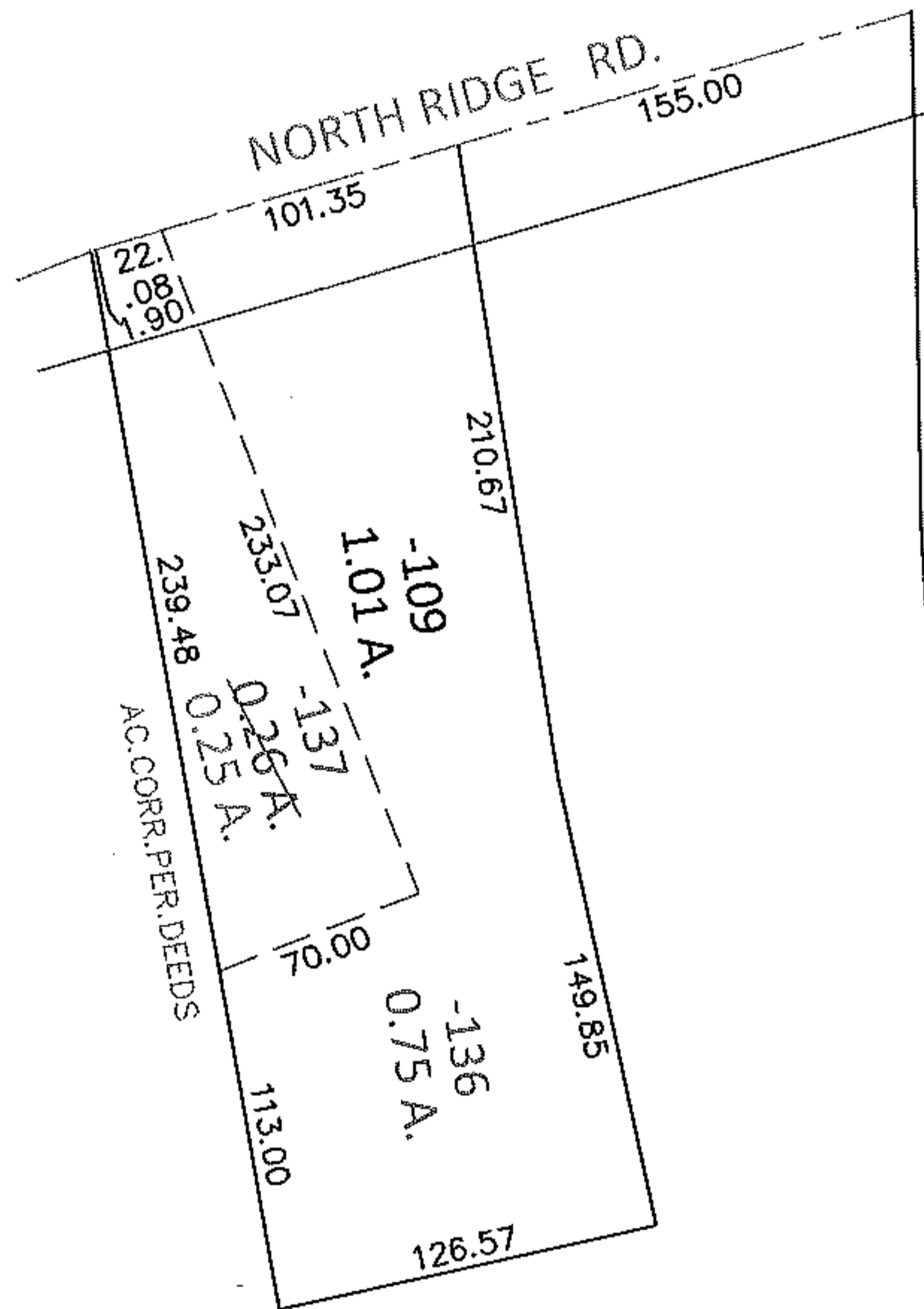
STARTING POINT: NORTHWEST CORNER OF LAND CONVEYED TO JOHN H. & DELORES J. HORVATH (DV 1353/106)

10-02037-U

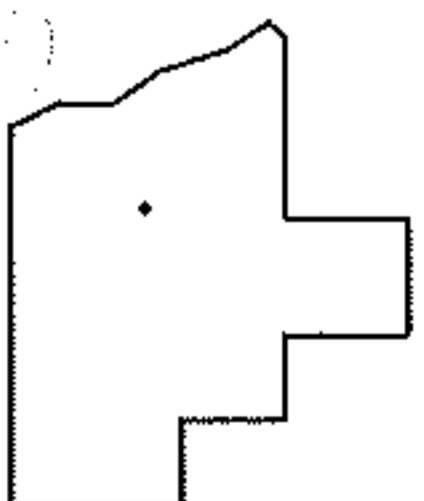


UNCOMBINATION

PER INSTRUMENT 20060142802  
& COURT CASE 10CV166131



REMOVE UPDATE LEGAL



SPLITS/DEEDS PROCESSED

LORAIN COUNTY TAX MAP DEPARTMENT  
226 MIDDLE AVE. ELYRIA, OHIO

SURVEYED BY: N/A

CLOSURE: .01:10,000

MAP PAGE(S): 5-00-097-A

APPROVED BY: RRM DATE: 6-10-10

SCALE: 1"= 100 PRIOR INST.: 20060142802