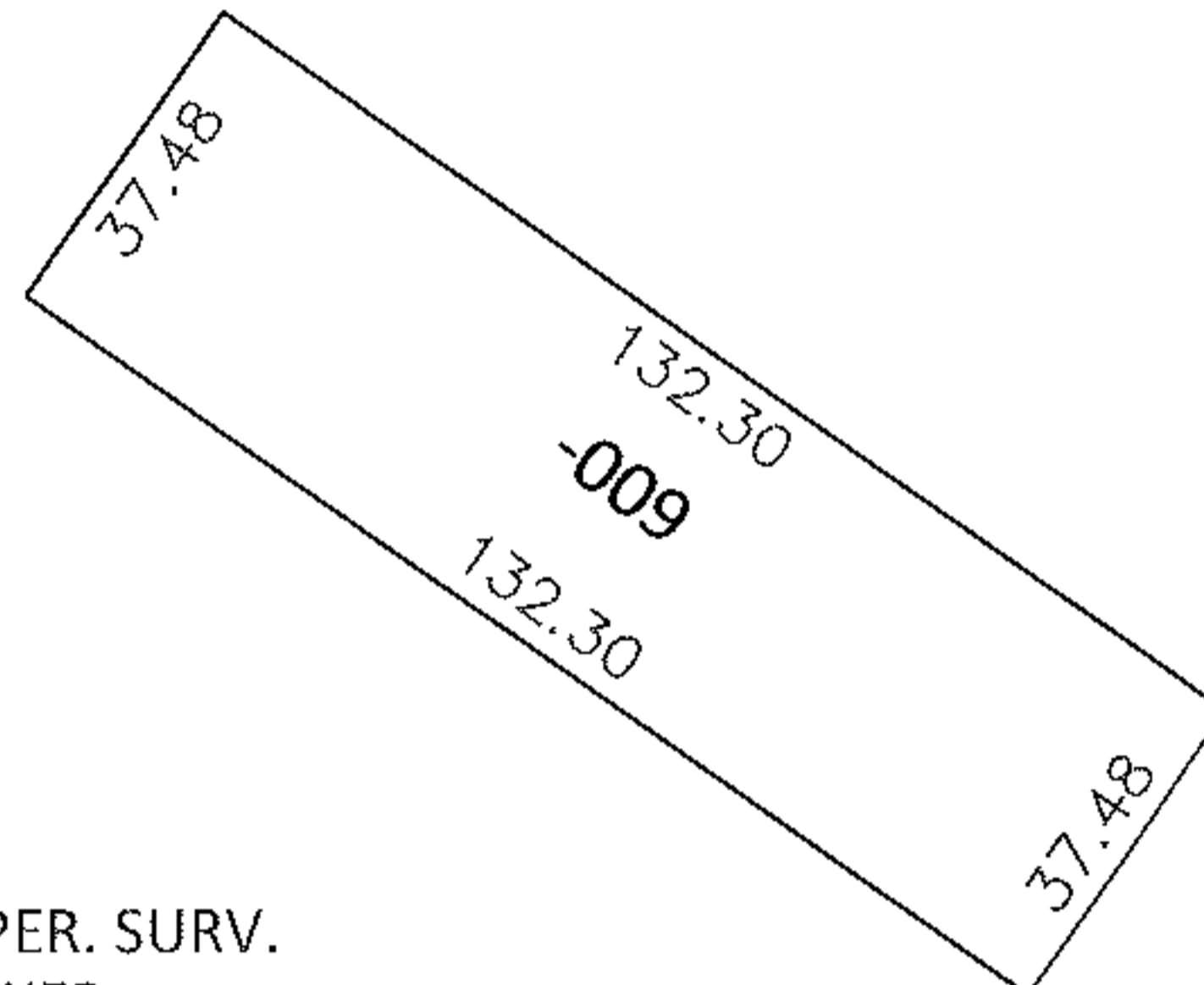
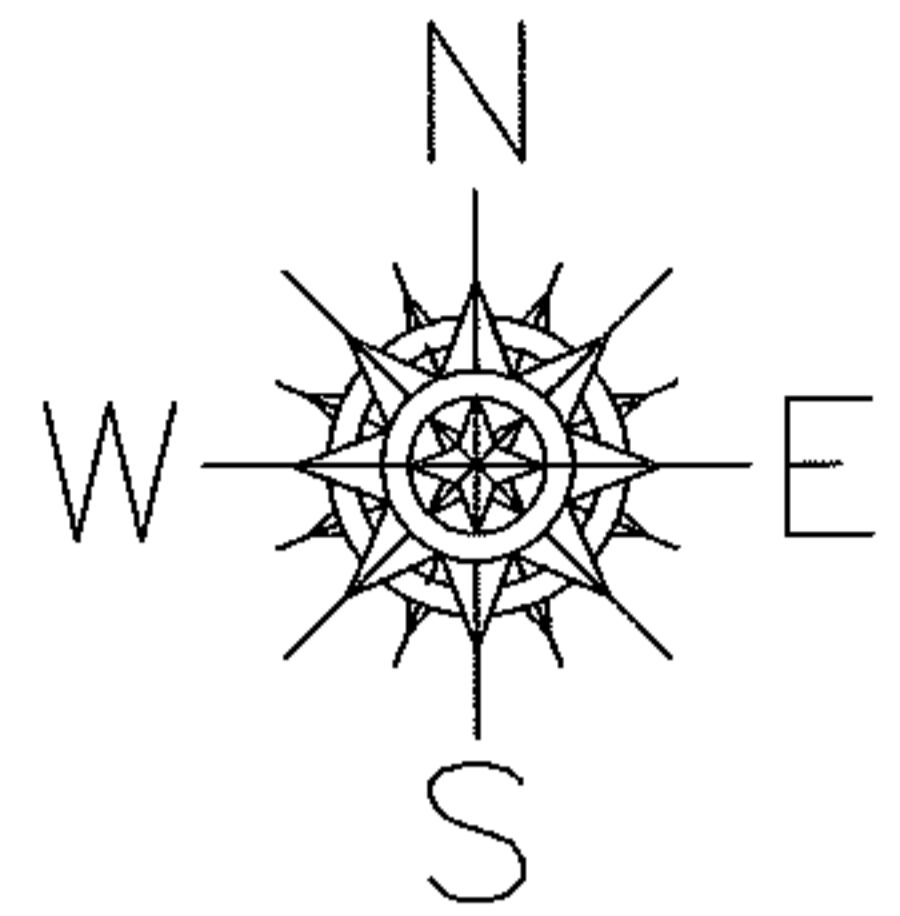


PARENT PARCEL: 06-24-148-000-009

CHILD PARCEL: _____

STARTING POINT: SOUTHEAST CORNER OF LANDS TO GEORGE POWERS(O.R. 1466/944)

10-02029-C

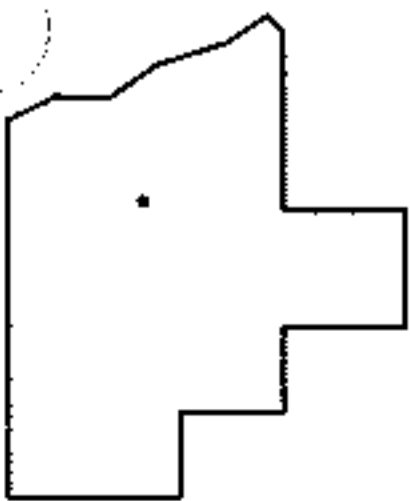
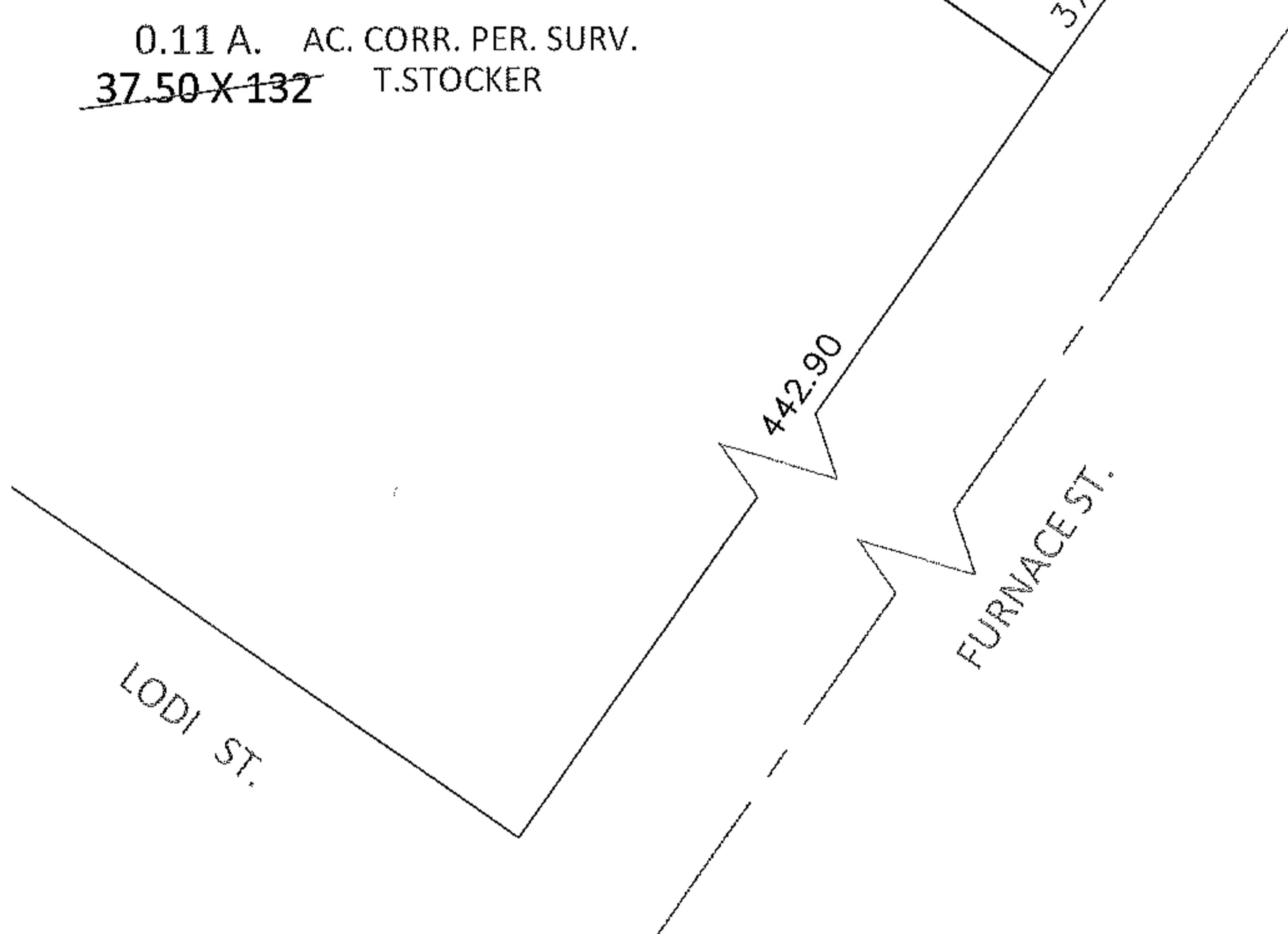


ACREAGE CORRECTION

06-24-148-000-009

0.11 A. AC. CORR. PER. SURV.

~~37.50 X 132~~ T.STOCKER



SPLITS/DEEDS PROCESSED

LORAIN COUNTY TAX MAP DEPARTMENT
226 MIDDLE AVE. ELYRIA, OHIO

SURVEYED BY: TIMOTHY E. STOCKER

CLOSURE: .01:10,000

MAP PAGE(S): 6-100

APPROVED BY: RRM DATE: 5-13-10

SCALE: 1"= 50' PRIOR INST.: 20060147091