

PARENT PARCEL: 20-04-012-000-001

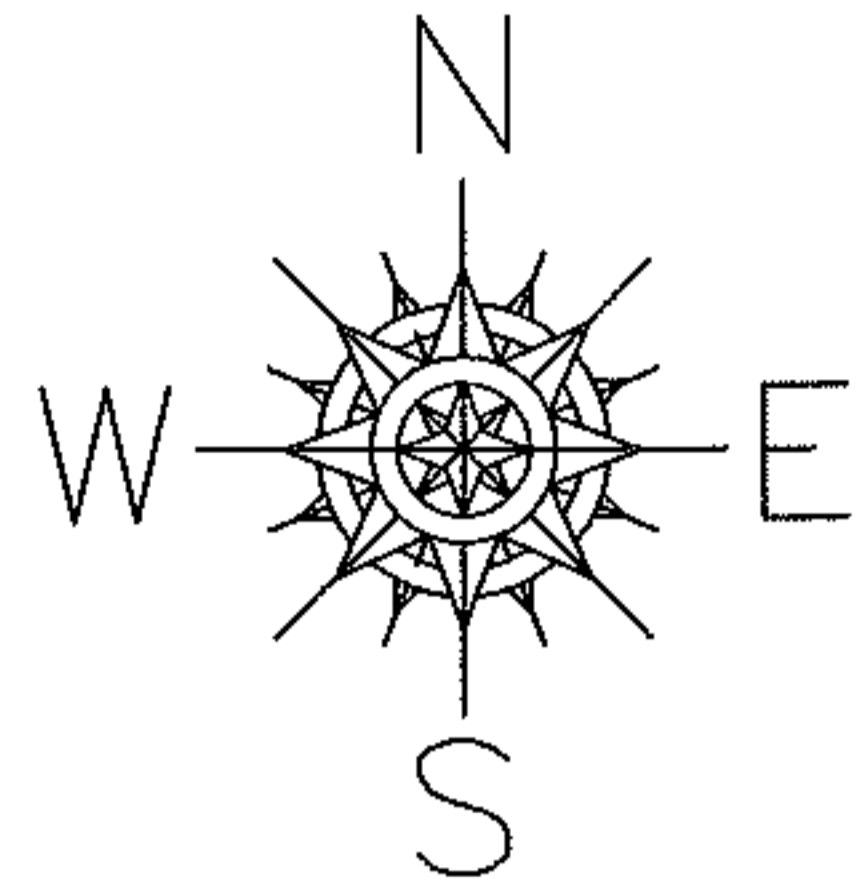
CHILD PARCEL: XX-XX-XXX-XXX-XXX

STARTING POINT: 2 CHAINS WEST OF THE WEST LINE OF VERMILION RD. (S.R. 511)

ON THE SOUTH LINE OF NEW LONDON-LAFAYETTE RD. (S.R. 162)

10-02026-C

ACREAGE CORRECTION



20-04-012-000-001

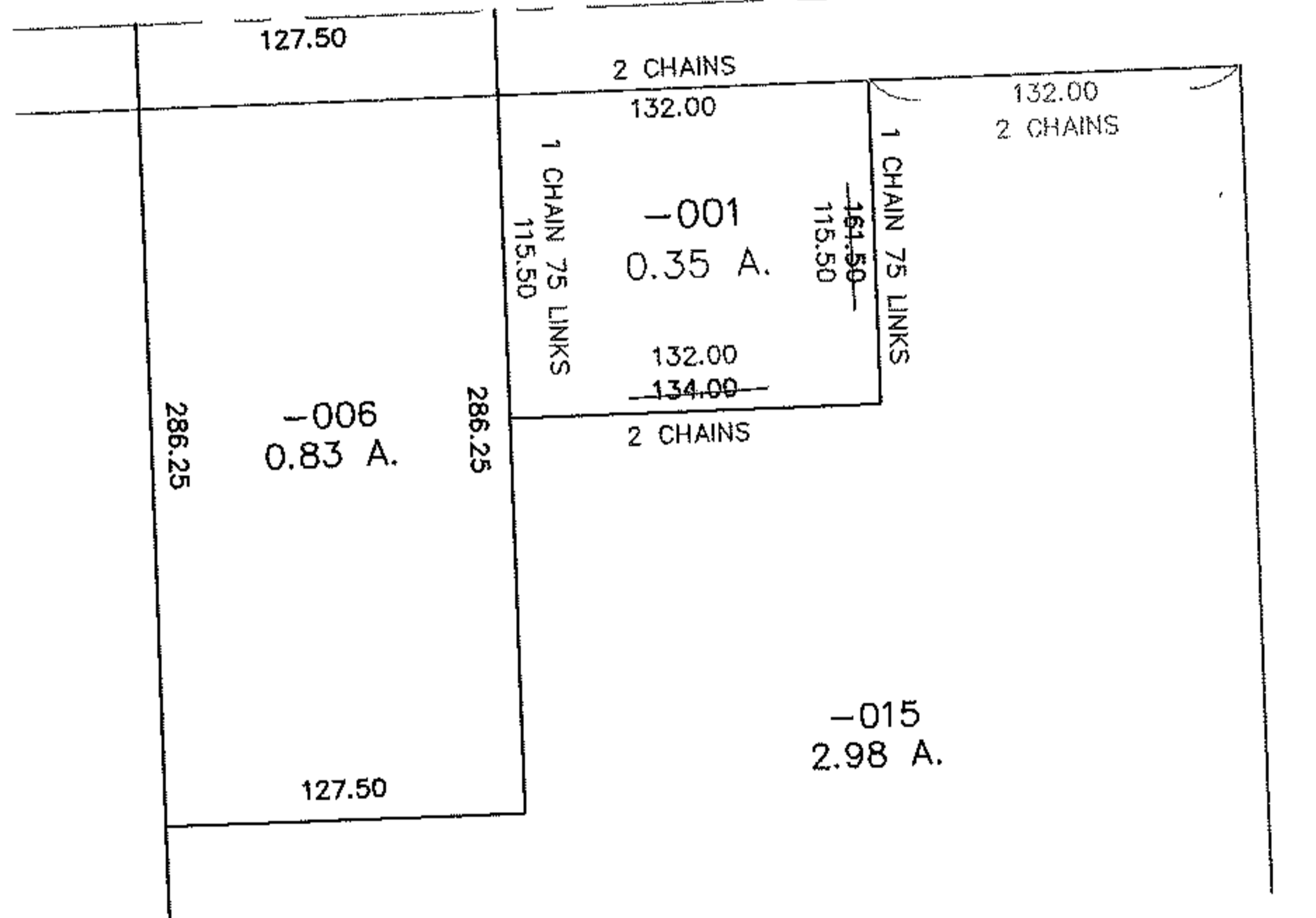
~~NO ACREAGE LISTED~~

0.35 A.

AC. CORR. PER DEED

DV. S PG. 611

NEW LONDON-LAFAYETTE RD (S.R. 162) 60'



PRIOR INSTRUMENT: DV S PG. 611

SPLITS/DEEDS PROCESSED

LORAIN COUNTY TAX MAP DEPARTMENT
226 MIDDLE AVE. ELYRIA, OHIO

SURVEYED BY: XXXXXXXXXXXX

CLOSURE: 0.00 : 10.000

MAP PAGE(S): 20-G

APPROVED BY: TJS DATE: 3/5/10

SCALE: 1" = 100