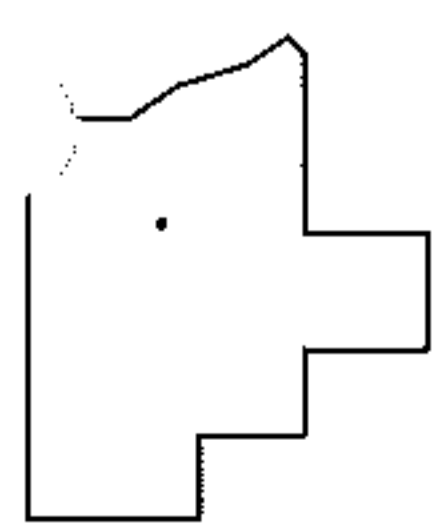
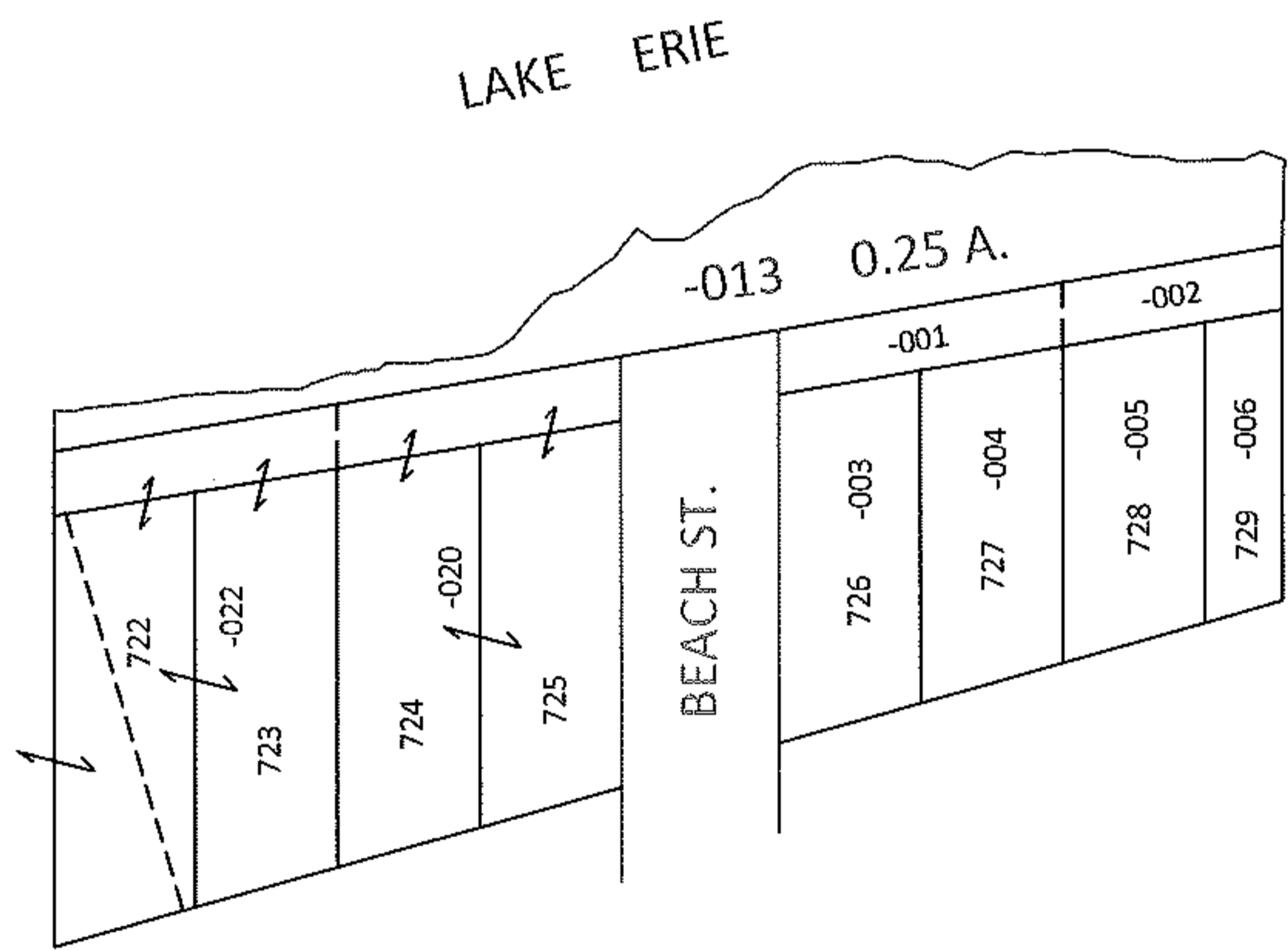
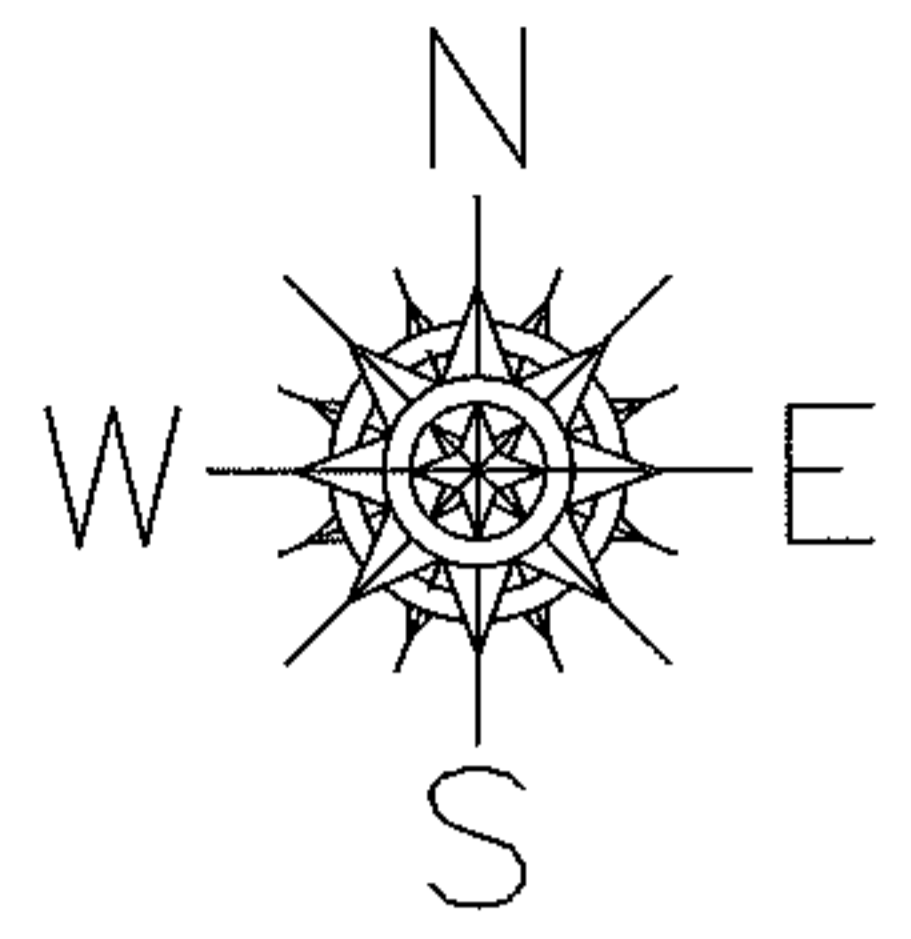


PARENT PARCEL: _____
CHILD PARCEL: 03-00-042-102-013
STARTING POINT: N/A

10-02023-C

ADD TO DUP.
SHEFFIELD PARK
PER. AUDITOR'S OFFICE
03-00-042-102-013
0.25 A.



SPLITS/DEEDS PROCESSED
LORAIN COUNTY TAX MAP DEPARTMENT
226 MIDDLE AVE. ELYRIA, OHIO

SURVEYED BY: N/A
CLOSURE: N/A
MAP PAGE(S): 3-00-042-A
APPROVED BY: RRM DATE: 4/26/10
SCALE: 1"= 100 PRIOR INST.: VOL.10 PG.21