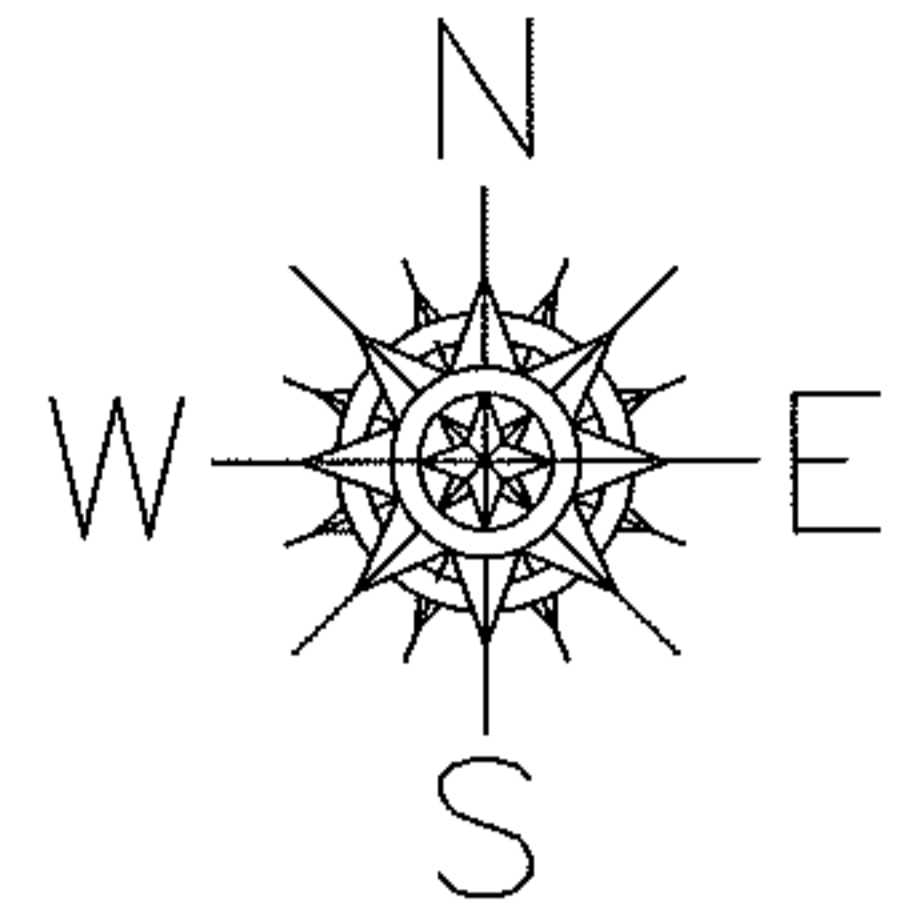


PARENT PARCEL: 05-00-023-112-038,-039

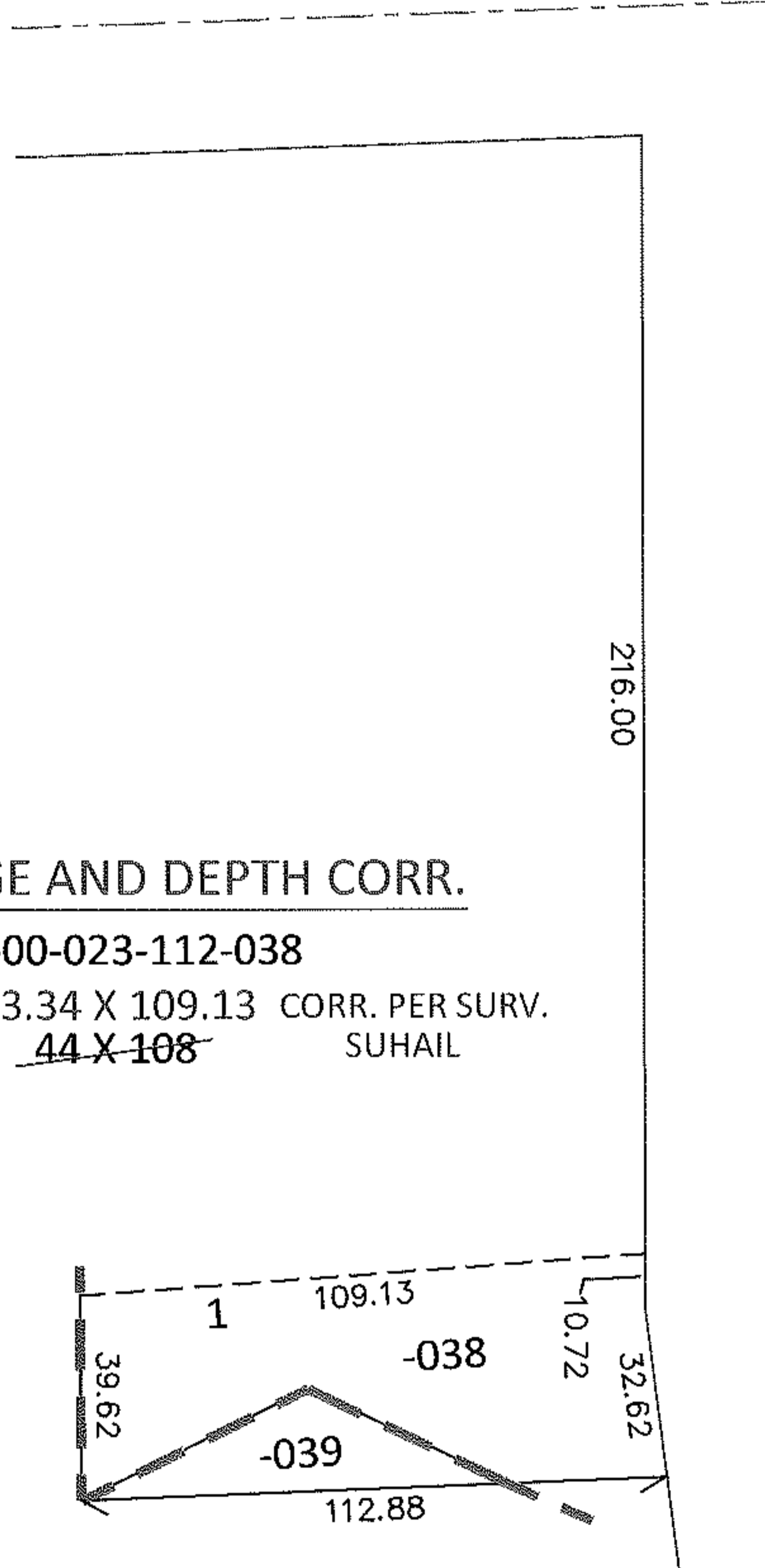
CHILD PARCEL: _____

STARTING POINT: INTERSECTION OF SOUTH R.O.W. LINE OF CORNELL AVE. AND WEST R.O.W. LINE OF HARRIS ST.

10-02021-C



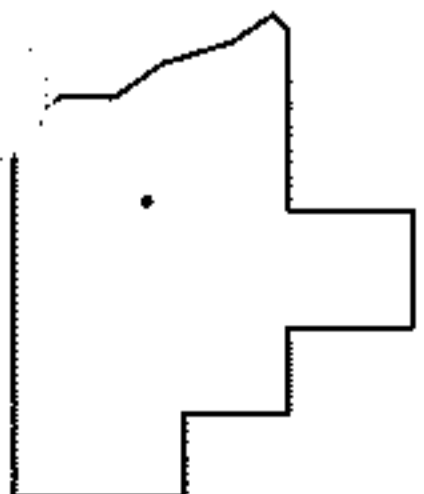
CORNELL AVE.



FRONTAGE AND DEPTH CORR.

05-00-023-112-038

43.34 X 109.13 CORR. PER SURV.
~~44 X 108~~ SUHAIL



SPLITS/DEEDS PROCESSED

LORAIN COUNTY TAX MAP DEPARTMENT
226 MIDDLE AVE. ELYRIA, OHIO

SURVEYED BY: SUHAIL & SUHAIL

CLOSURE: .01:10,000

MAP PAGE(S): 5-00-023-A

APPROVED BY: RRM DATE: 4/26/10

SCALE: 1"= 50 PRIOR INST.: DV 1043/115