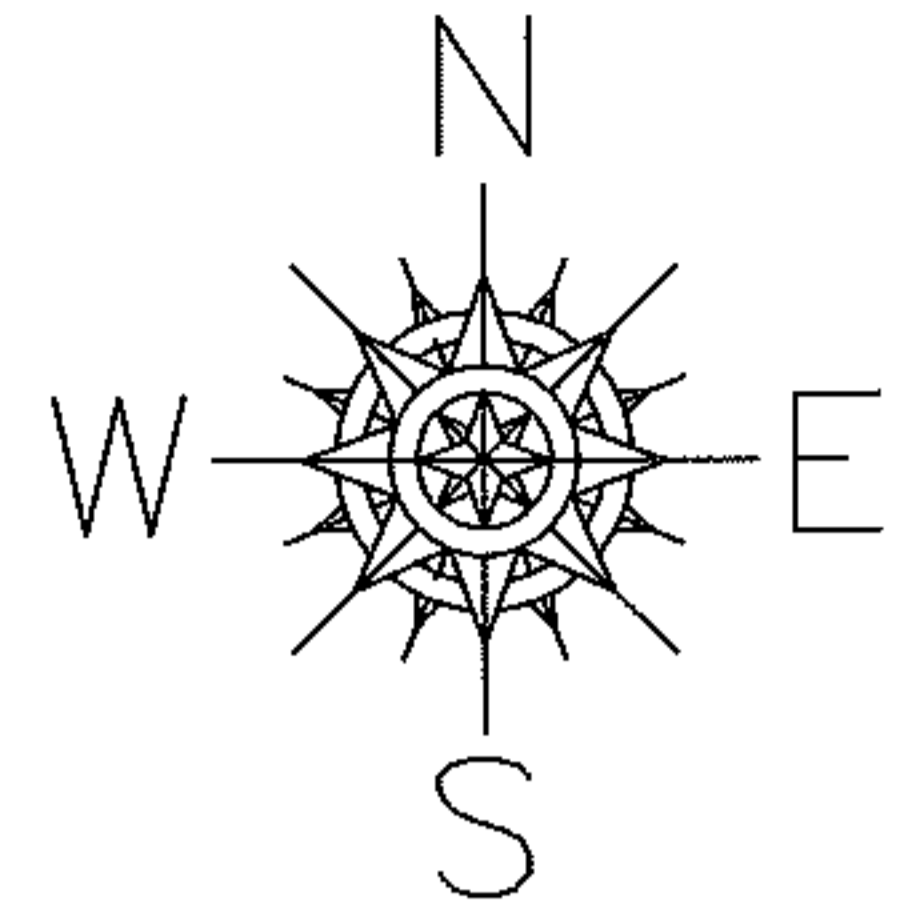


PARENT PARCEL: 07-00-027-104-015

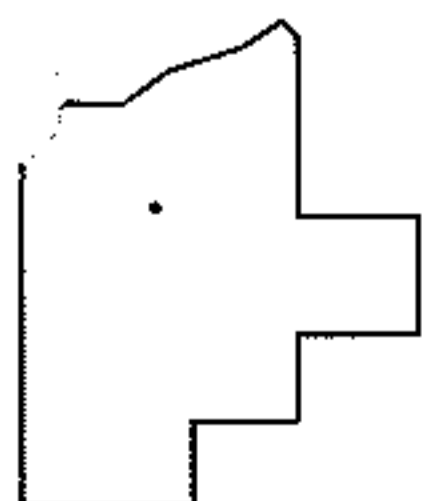
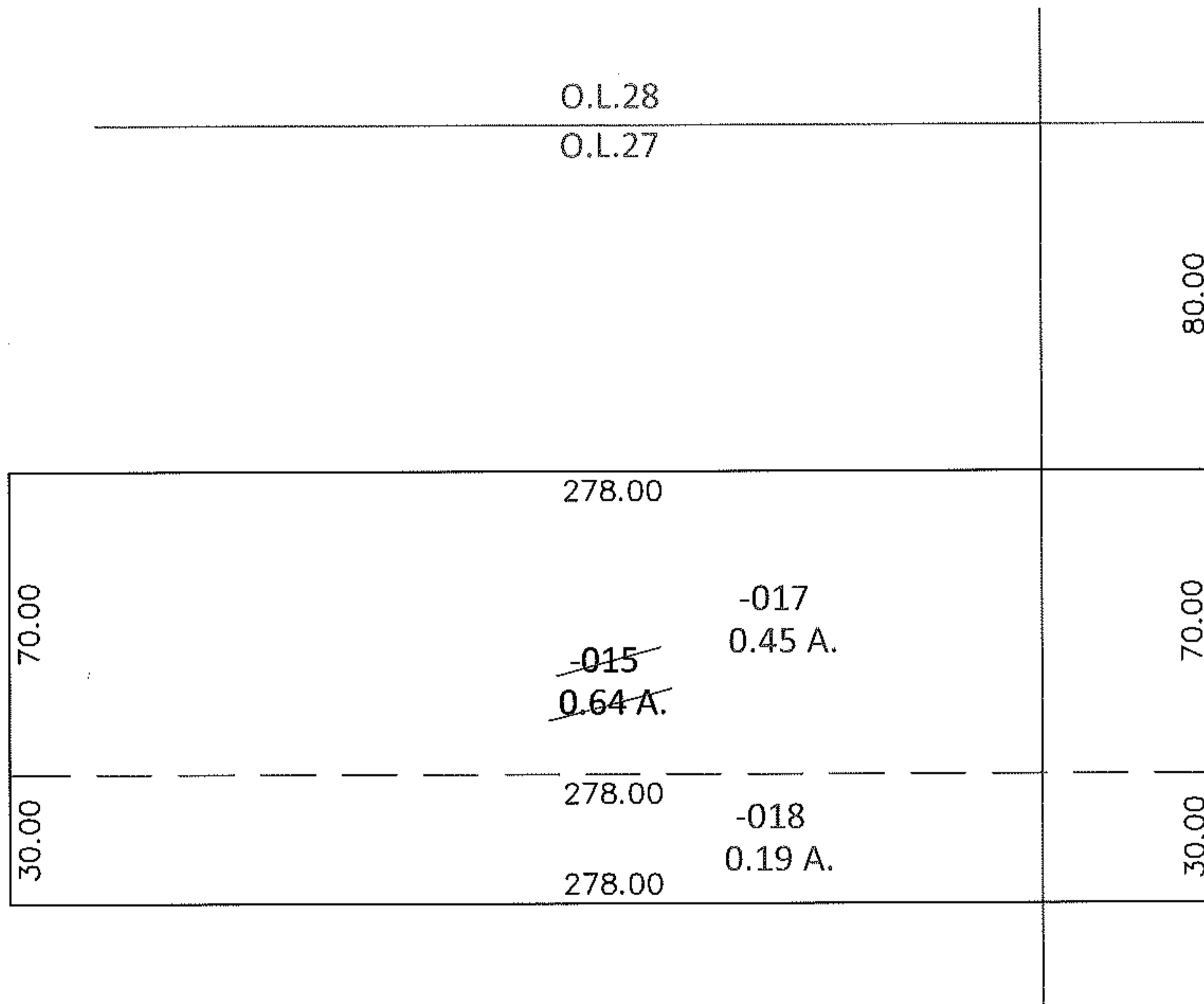
CHILD PARCEL: 07-00-027-104-017, -018

STARTING POINT: NORTHEAST CORNER OF O.L. 27

10-02015-U



UNCOMBINATION
PER PRIORS AND COURT CASE
NO. 09CV164997



SPLITS/DEEDS PROCESSED

LORAIN COUNTY TAX MAP DEPARTMENT
226 MIDDLE AVE. ELYRIA, OHIO

SURVEYED BY: N/A

CLOSURE: N/A

MAP PAGE(S): 7-00-027-B

APPROVED BY: RRM DATE: 4/15/10

SCALE: 1"= 50 PRIOR INST.: 19920209140