

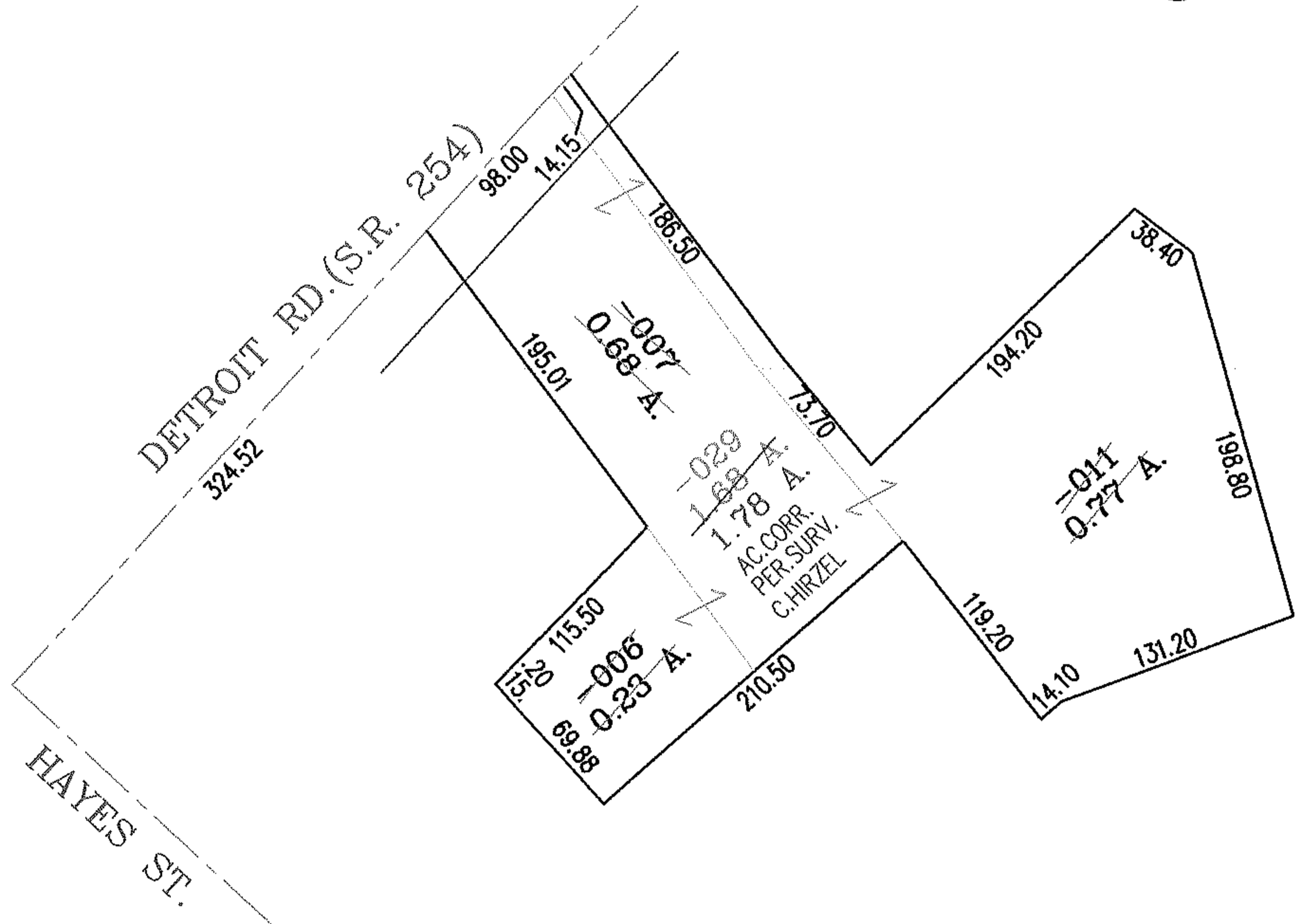
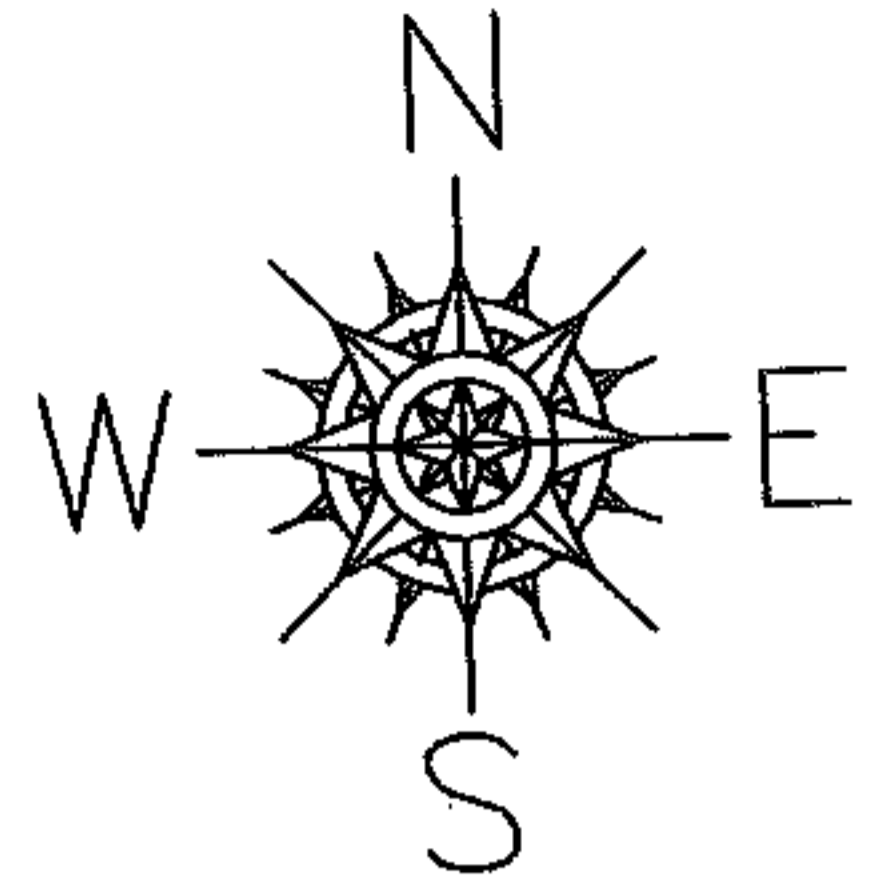
RASTER

PARENT PARCEL: 04-00-011-103-006, -007, -011

CHILD PARCEL: 04-00-011-103-029

STARTING POINT: INTERSECTION OF C/L OF HAYES RD. AND C/L OF S.R. 254

05-02009



SPLITS/DEEDS PROCESSED

LORAIN COUNTY TAX MAP DEPARTMENT
226 MIDDLE AVE. ELYRIA, OHIO

SURVEYED BY: CHRISTOPHER M. HIRZEL

CLOSURE: .01:10.000

MAP PAGE(S): 04-00-011-B

APPROVED BY: RRM DATE: 9-22-05

SCALE: 1" = 100' PRIOR INSTRUMENT: 20040046921