

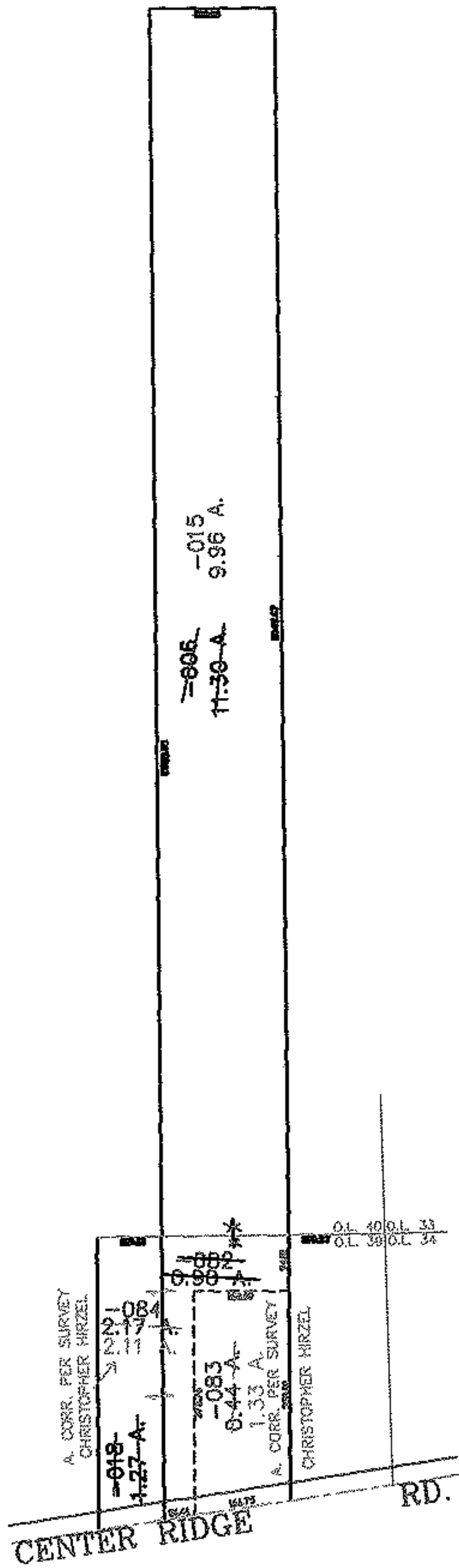
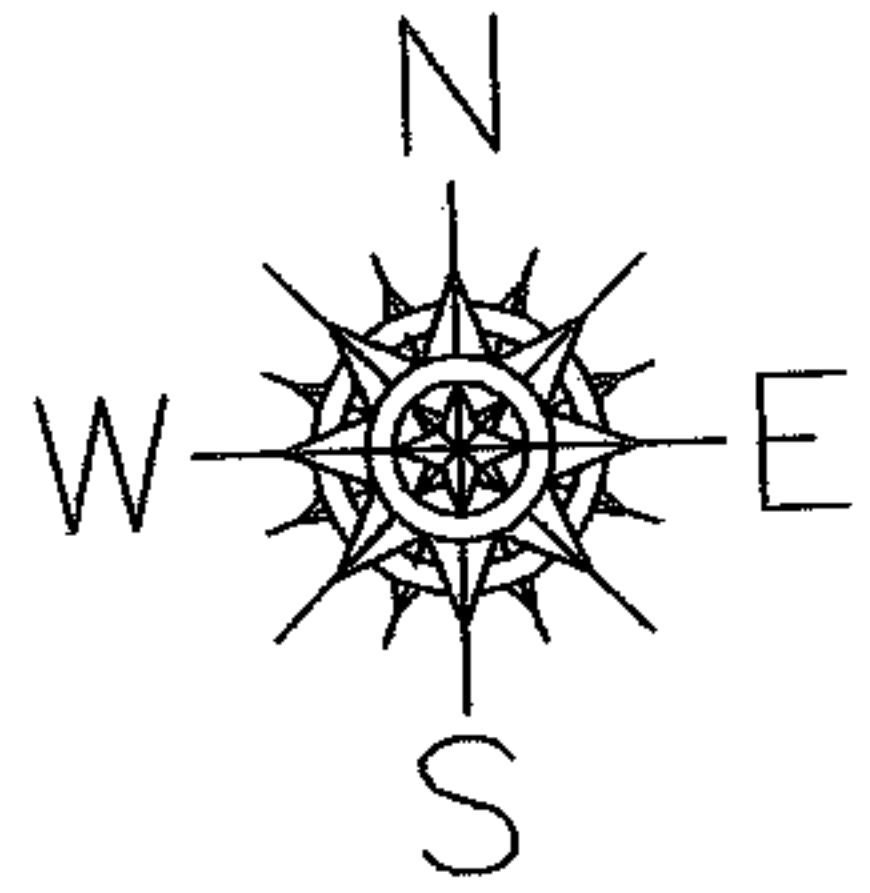
RASTER

PARENT PARCEL: 07-00-040-000-006, 07-00-039-000-018

CHILD PARCEL: 07-00-040-000-015, 07-00-039-000-082 THRU -084

STARTING POINT: SOUTHEASTERLY CORNER OF O.L. 39 & 40

05-02007



SPLITS/DEEDS PROCESSED

LORAIN COUNTY TAX MAP DEPARTMENT
226 MIDDLE AVE. ELYRIA, OHIO

SURVEYED BY: CHRISTOPHER HIRZEL

CLOSURE: 0.00 : 10.000

MAP PAGE(S): 07-00-039-B 7-E

APPROVED BY: JAH DATE: 9-20-05

SCALE: 1" = 400 PRIOR INSTRUMENT: DV 758/241