

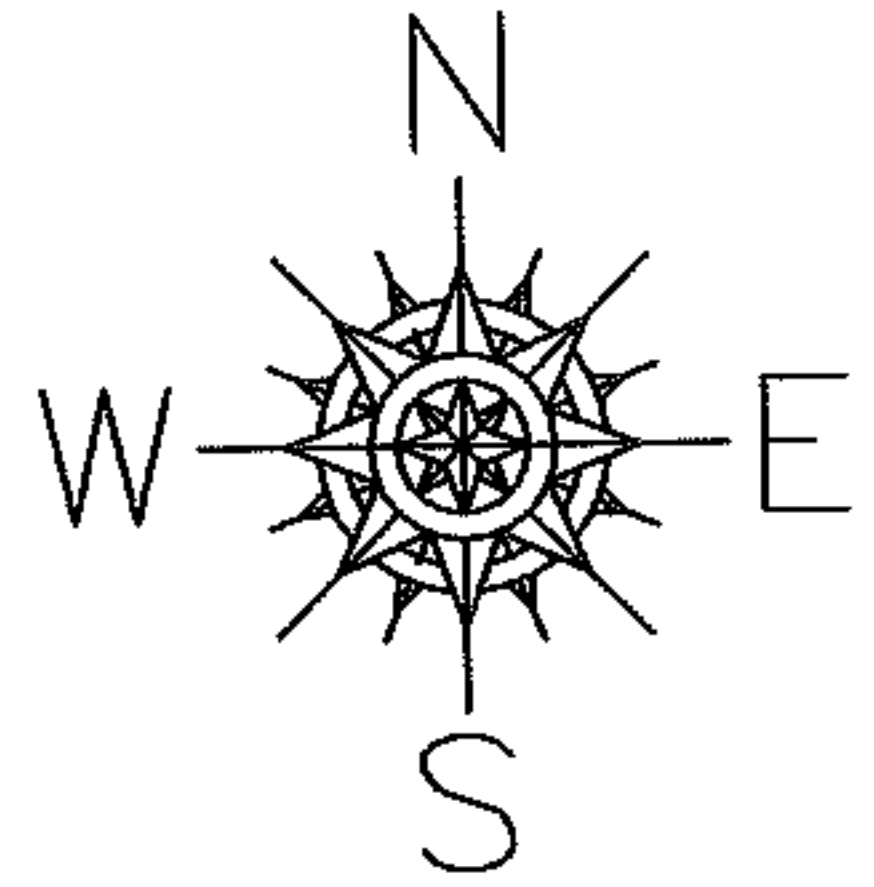
RASTER

PARENT PARCEL: 07-00-017-129-040

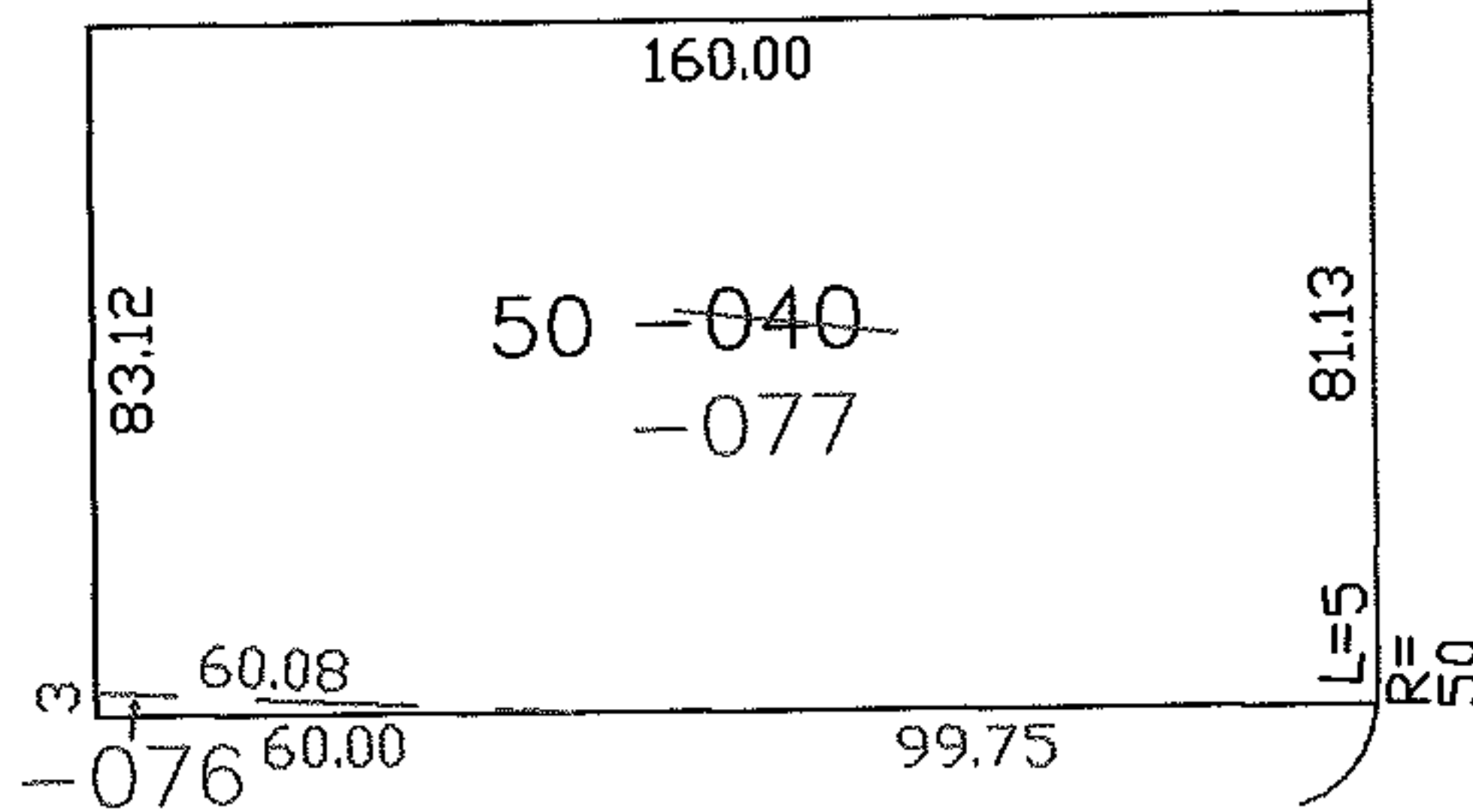
CHILD PARCEL: 07-00-017-129-076, -077

STARTING POINT: SOUTHEAST CORNER OF S/L 50 & RIGHT-OF-WAY OPAL ST.

05-02003



CENTER GATE MILLS SUBD NO 1
VOL 31 PGS 44-46



OPAL ST.

SURVEYED BY: DANE HAPONEK
CLOSURE: 0.00 : 10.000
MAP PAGE(S): 07-00-017-D
APPROVED BY: JAH DATE: 09-13-05
SCALE: 1"= 100 PRIOR INSTRUMENT: VOL 31/44

SPLITS/DEEDS PROCESSED

LORAIN COUNTY TAX MAP DEPARTMENT
226 MIDDLE AVE. ELYRIA, OHIO

