

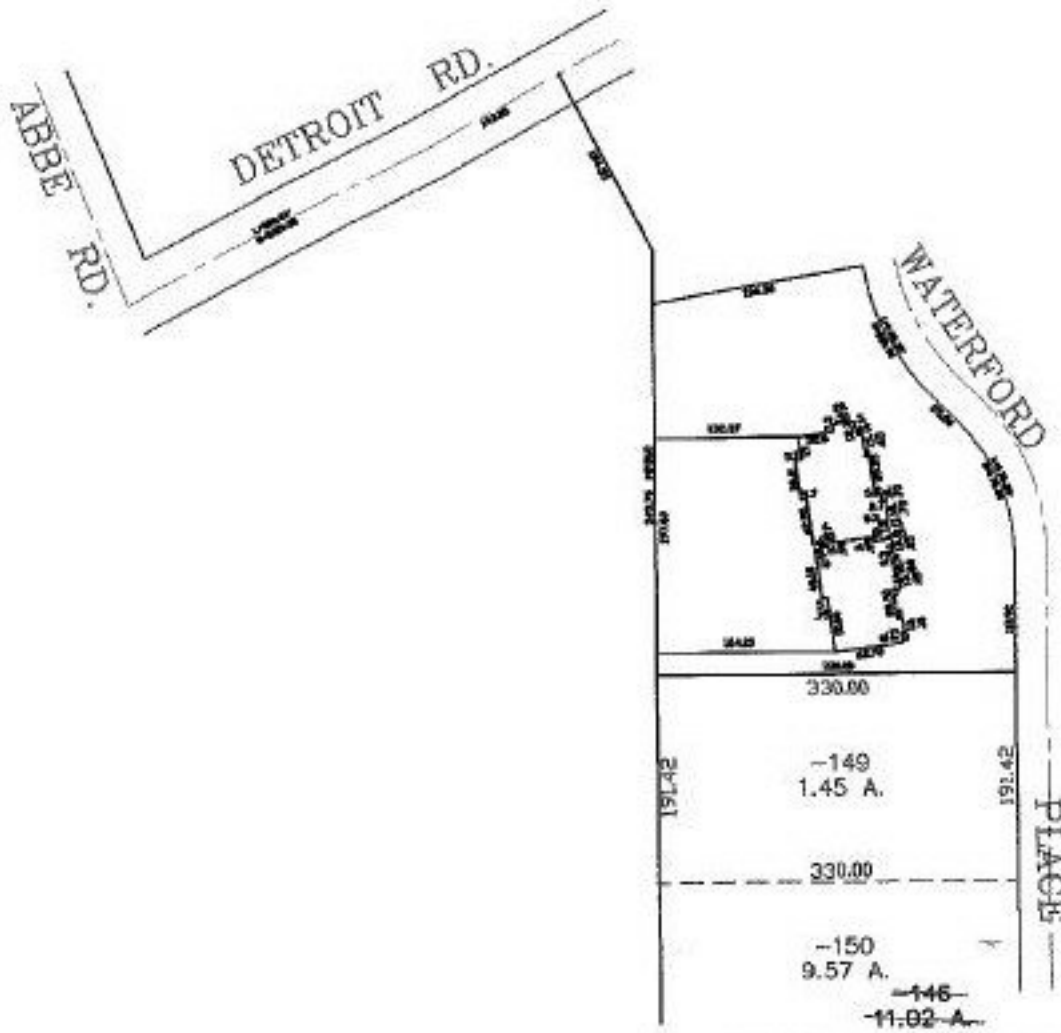
RASTER

PARENT PARCEL: 03-00-001-000-146

CHILD PARCEL: 03-00-001-000-149, -150

STARTING POINT: CENTERLINE OF ABBE RD. & DETROIT RD.

NO. 01274



REMAINDER WILL BE SURVEYED WHEN PLATTED



**SPLITS/DEEDS PROCESSED**  
LORAIN COUNTY TAX MAP DEPARTMENT  
226 MIDDLE AVE. ELYRIA, OHIO

SURVEYED BY: RAYMOND W. FOOS  
 CLOSURE: 0.00 : 10.000  
 MAP PAGE(S): 03-00-001-A  
 APPROVED BY: JAH DATE: 12-12-02  
 SCALE: 1" = 200 PRIOR INSTRUMENT: PA 73/40 & 41