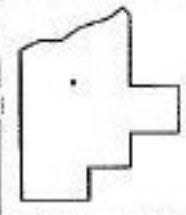
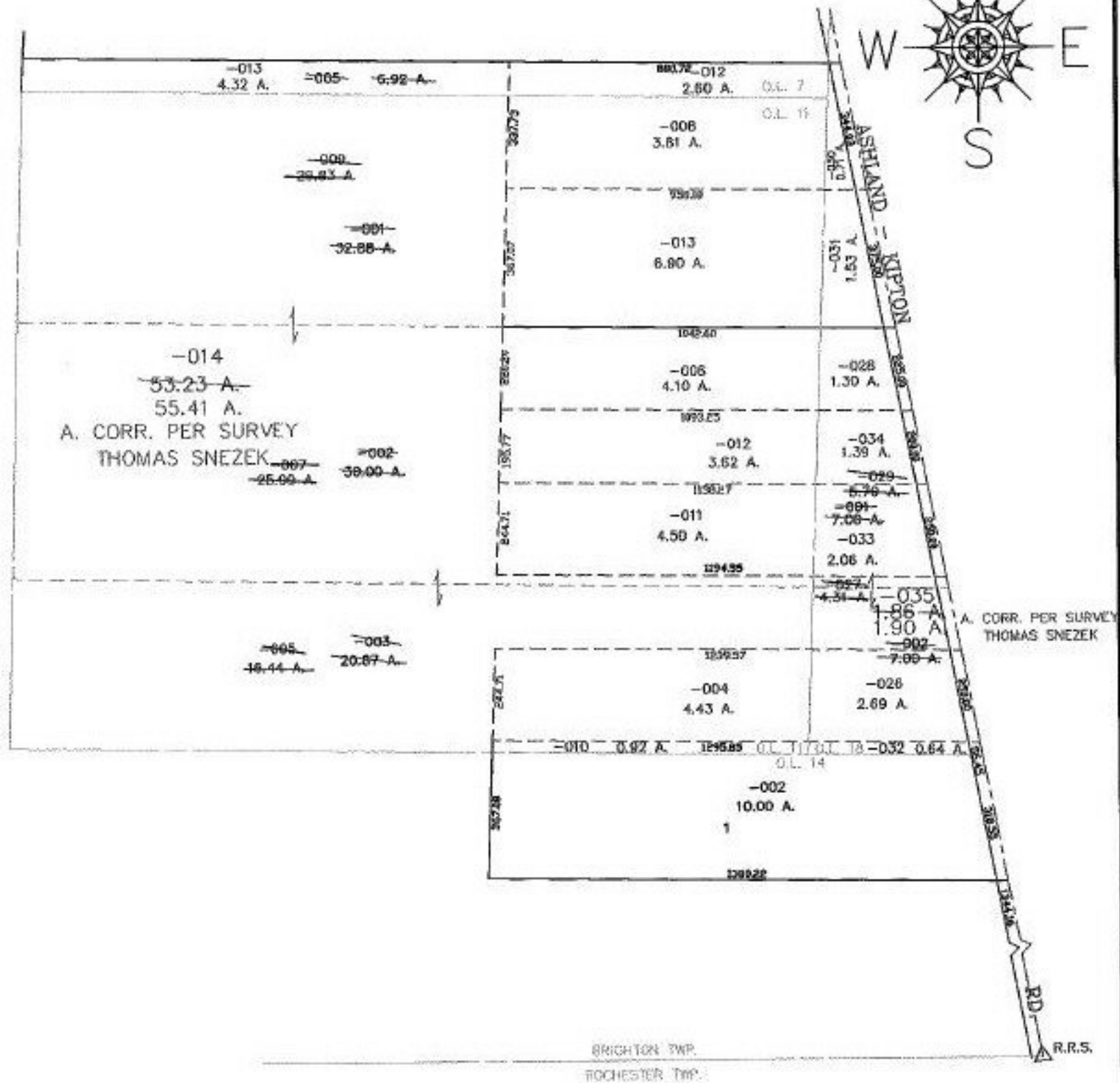


PARENT PARCEL: 17-06-018-000-002, -001 17-06-011-000-003, -002, -001 *SEE BELOW
CHILD PARCEL: 17-06-007-000-012, -013 17-06-011-000-004 THRU -014 **SEE BELOW
STARTING POINT: CENTERLINE OF ASHLAND-KIPTON RD. & O.L. 14

NO. 01250

*17-06-007-000-005

**17-06-018-000-026 THRU -035



SPLITS/DEEDS PROCESSED
LORAIN COUNTY TAX MAP DEPARTMENT
226 MIDDLE AVE. ELYRIA, OHIO

SURVEYED BY: THOMAS M. SNEZEK
CLOSURE: 0.00 : 10.000
MAP PAGE(S): 17-F
APPROVED BY: JAH DATE: 11-25-02
SCALE: 1" = 400' PRIOR INSTRUMENT: 2002857870