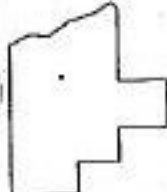
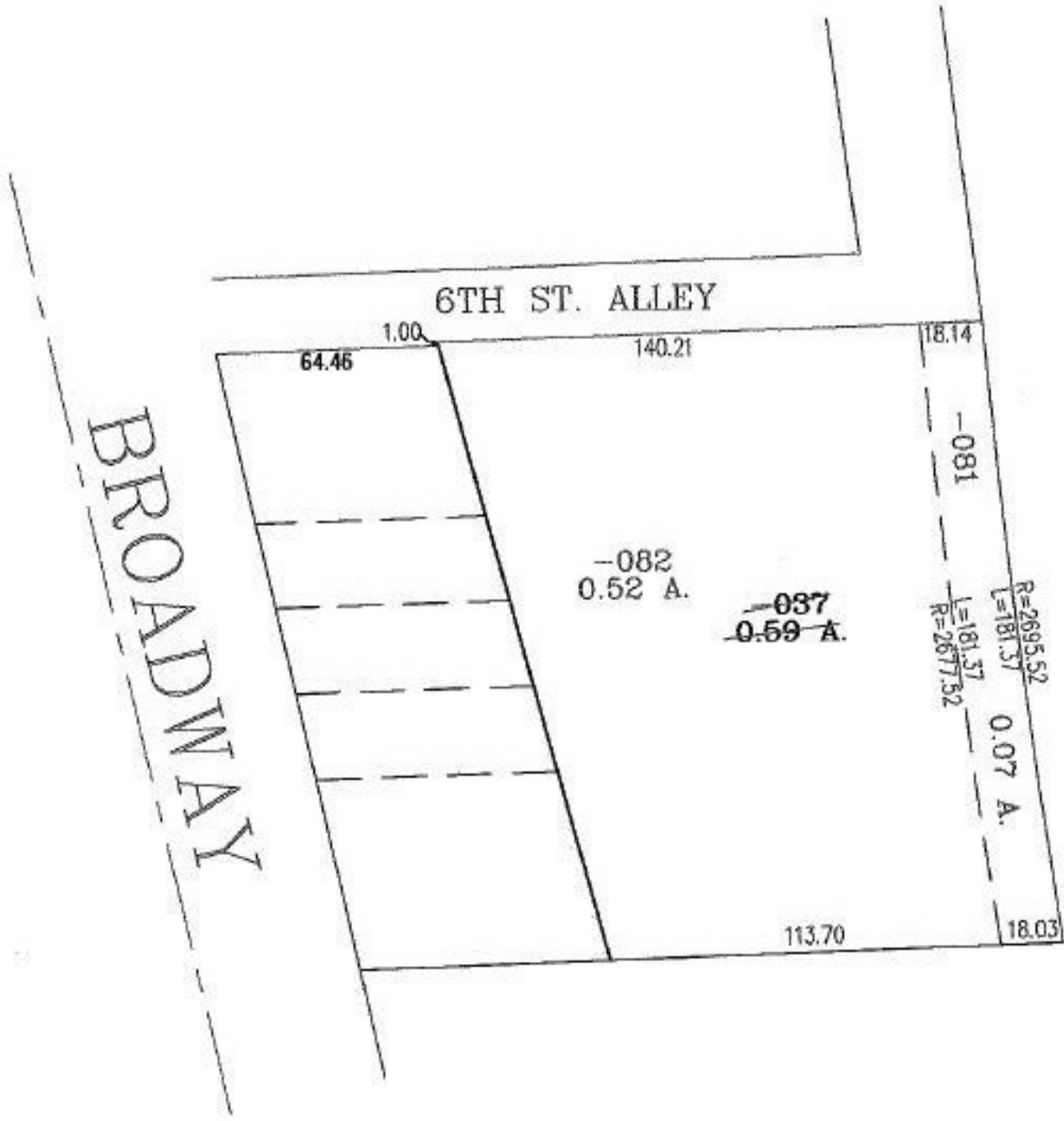


PARENT PARCEL: 02-01-004-101-037

CHILD PARCEL: 02-01-004-101-081, -082

STARTING POINT: INTERSECTION OF EAST R.O.W. LINE OF BROADWAY AND SOUTH R.O.W. OF 6TH ST.

NO. 01227



**SPLITS/DEEDS PROCESSED**  
 LORAIN COUNTY TAX MAP DEPARTMENT  
 226 MIDDLE AVE. ELYRIA, OHIO

SURVEYED BY: MARK ALLEN YEAGER  
 CLOSURE: .00:10.000  
 MAP PAGE(S): 02-01-004-B  
 APPROVED BY: RRM DATE: 10-14-02  
 SCALE: 1" = 50' PRIOR INSTRUMENT: