

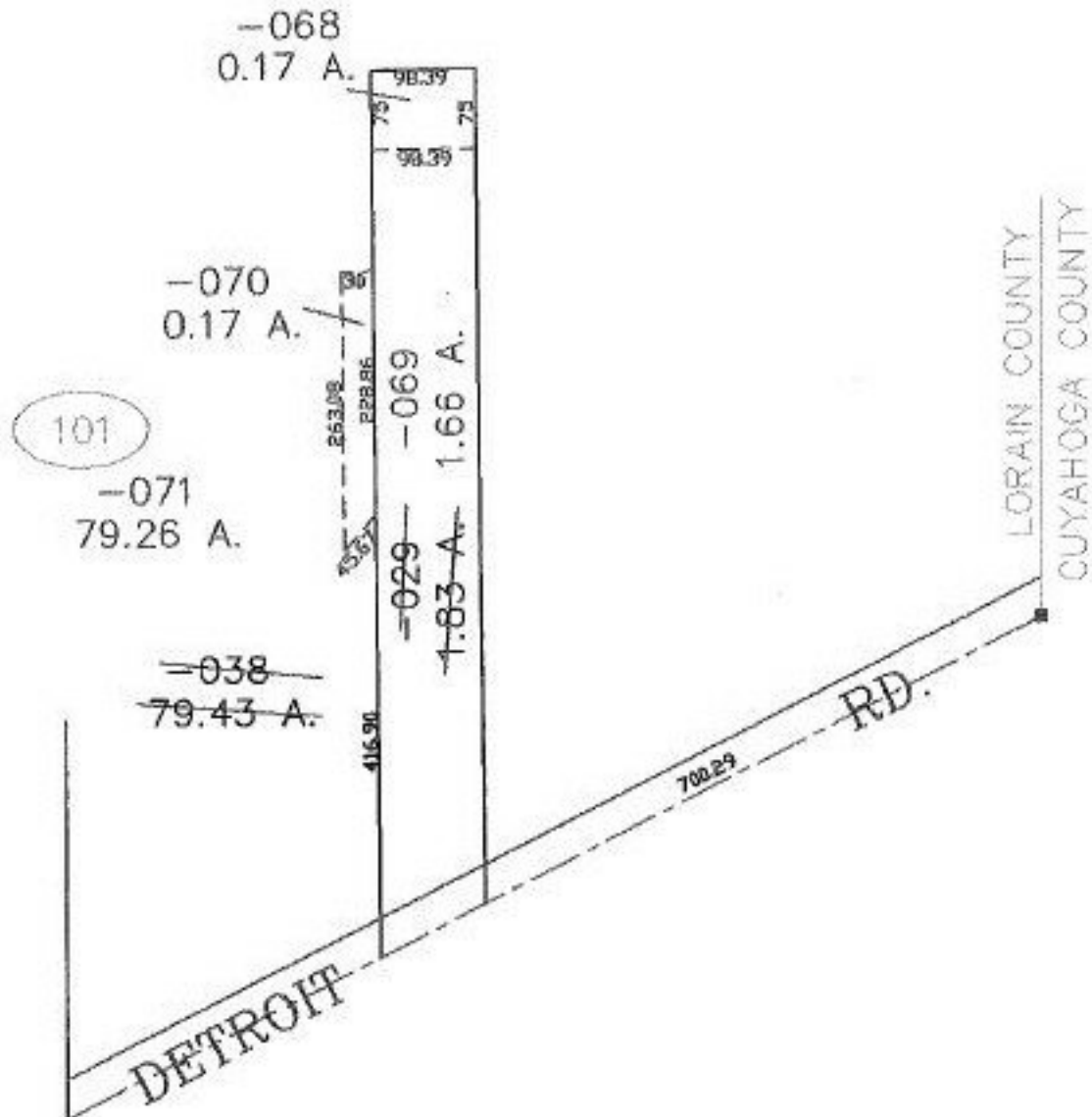
RASTER

PARENT PARCEL: 04-00-027-101-029

CHILD PARCEL: 04-00-027-101-069 THRU -071

STARTING POINT: CENTERLINE OF DETROIT RD. & LORAIN COUNTY CORP LINE

NO. 01215



SPLITS/DEEDS PROCESSED
 LORAIN COUNTY TAX MAP DEPARTMENT
 226 MIDDLE AVE. ELYRIA, OHIO

SURVEYED BY: JIM RESAR
 CLOSURE: 0.00 : 10.000
 MAP PAGE(S): 4-00-027-D
 APPROVED BY: JAH DATE: 9-27-02
 SCALE: 1" = 200' PRIOR INSTRUMENT: 20010784406