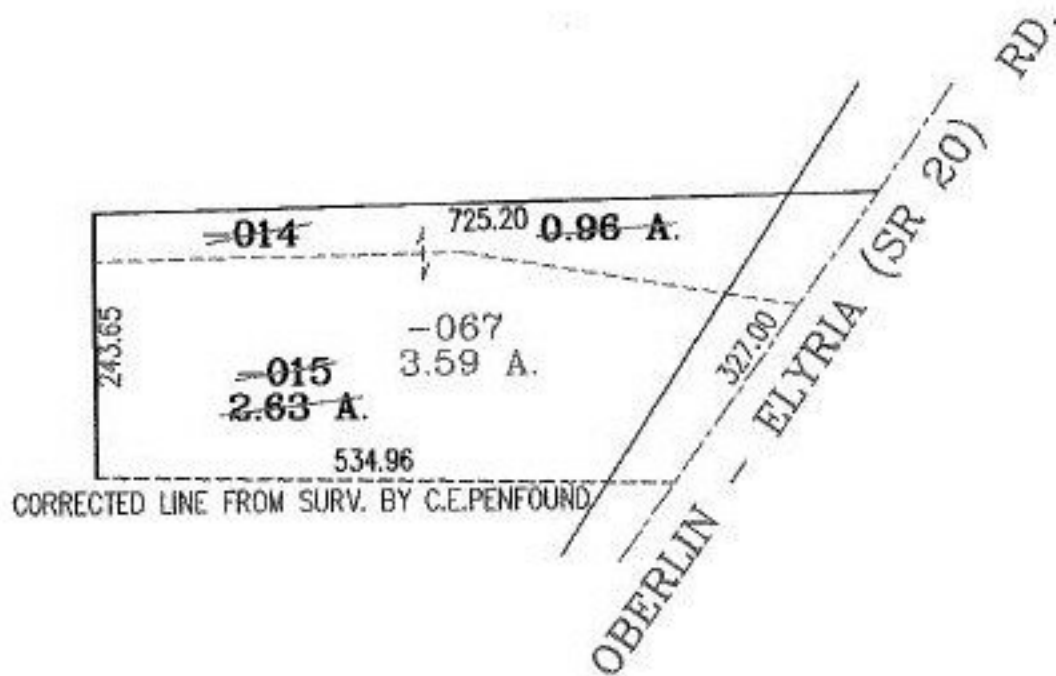


PARENT PARCEL: 09-00-089-000-014,-015

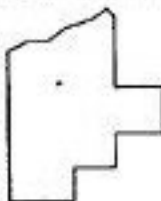
CHILD PARCEL: 09-00-089-000-067

STARTING POINT: AT A POINT IN THE C/L OF OBERLIN - ELYRIA RD.(SR 20)

NO. 01201



CORRECTED LINE FROM SURV. BY C.E.PENFOUND



SPLITS/DEEDS PROCESSED
LORAIN COUNTY TAX MAP DEPARTMENT
226 MIDDLE AVE. ELYRIA, OHIO

SURVEYED BY: C.E. PENFOUND

CLOSURE: N/A

MAP PAGE(S): 9-00-089-B

APPROVED BY: BRM DATE: 9-10-02

SCALE: 1" = 200' PRIOR INSTRUMENT: