

PARENT PARCEL: 04-00-024-116-205

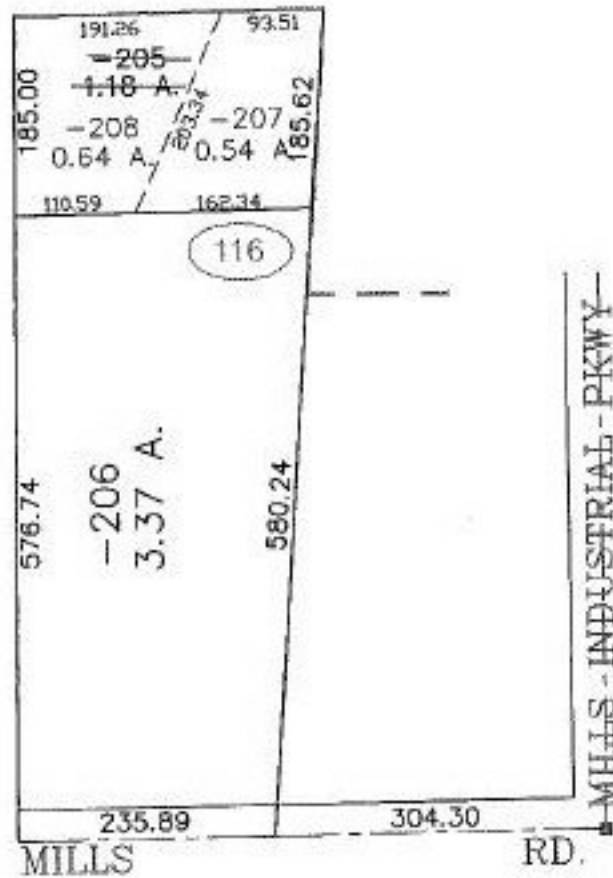
CHILD PARCEL: 04-00-024-116-207, -208

STARTING POINT: CENTERLINE OF MILLS RD. & MILLS INDUSTRIAL PKWY.

NO. 01198



REDTAIL DEVELOPMENT NO. 4
VOL. 60 PG. 62-63



SPLITS/DEEDS PROCESSED

LORAIN COUNTY TAX MAP DEPARTMENT
226 MIDDLE AVE. ELYRIA, OHIO

SURVEYED BY: DAVID ELWELL

CLOSURE: 0.00 : 10.000

MAP PAGE(S): 4-00-024-G

APPROVED BY: TJS DATE: 10/25/10

SCALE: 1" = 200' PRIOR INSTRUMENT: 20010780891