

PARENT PARCEL: 04-00-024-116-066

CHILD PARCEL: 04-00-024-116-068, -069

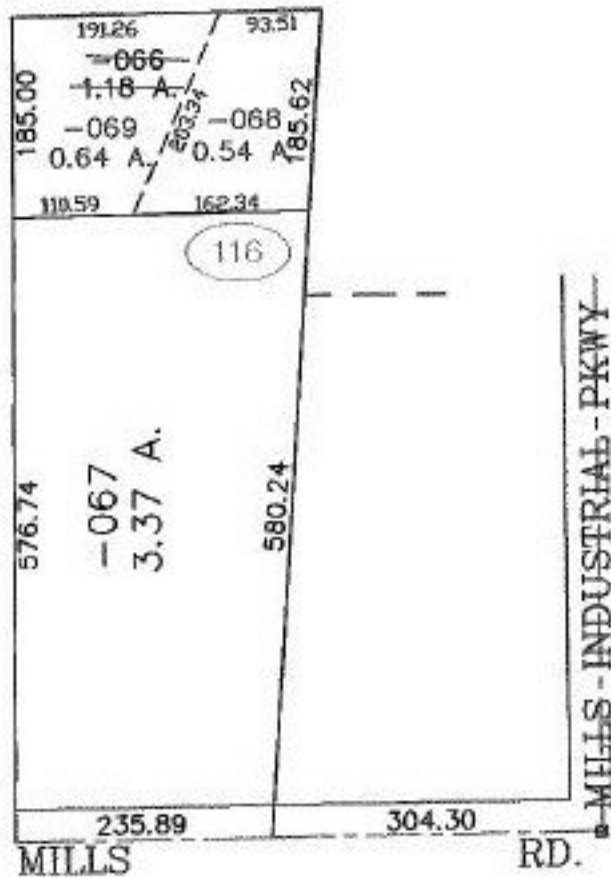
STARTING POINT: CENTERLINE OF MILLS RD. & MILLS INDUSTRIAL PKWY.

NO. 01198

V O I D



REDTAIL DEVELOPMENT NO. 4
VOL. 60 PG. 62-63



SPLITS/DEEDS PROCESSED
LORAIN COUNTY TAX MAP DEPARTMENT
226 MIDDLE AVE. ELYRIA, OHIO

SURVEYED BY: DAVID ELWELL
 CLOSURE: 0.00 : 10.000
 MAP PAGE(S): 4-00-024-G
 APPROVED BY: JAH DATE: 9-9-02
 SCALE: 1" = 200' PRIOR INSTRUMENT: 20010780891