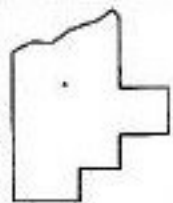
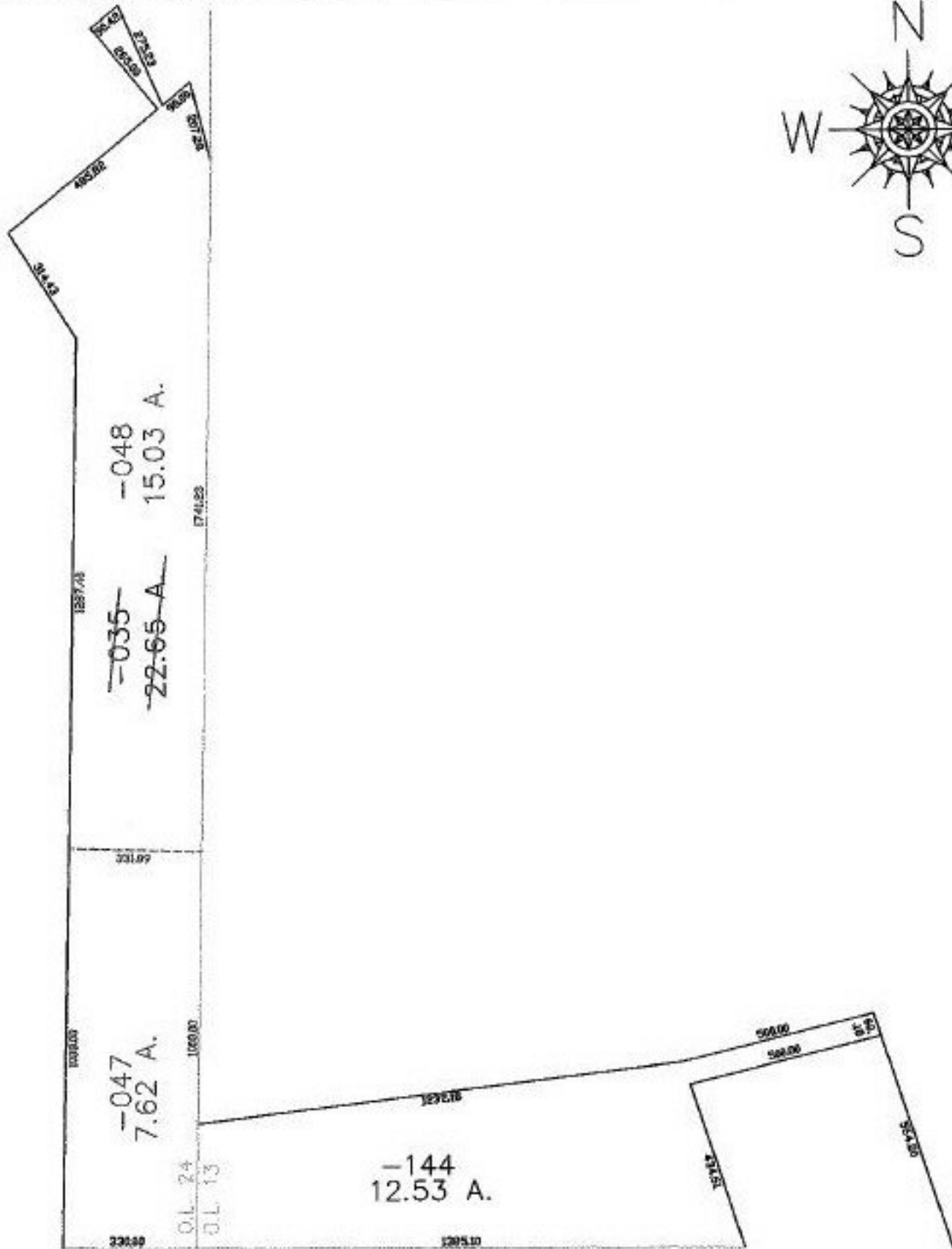


PARENT PARCEL: 07-00-024-102-035

CHILD PARCEL: 07-00-024-102-047, -048

STARTING POINT: INTERSECTION OF O.L. 24 & O.L. 13

NO. 01196



**SPLITS/DEEDS PROCESSED**  
**LORAIN COUNTY TAX MAP DEPARTMENT**  
 226 MIDDLE AVE. ELYRIA, OHIO

SURVEYED BY: DANE HAPONEK  
 CLOSURE: 0.00 : 10.000  
 MAP PAGE(S): 7-00-024-D  
 APPROVED BY: JAH DATE: 9-3-02  
 SCALE: 1" = 400 PRIOR INSTRUMENT: OR 507/470