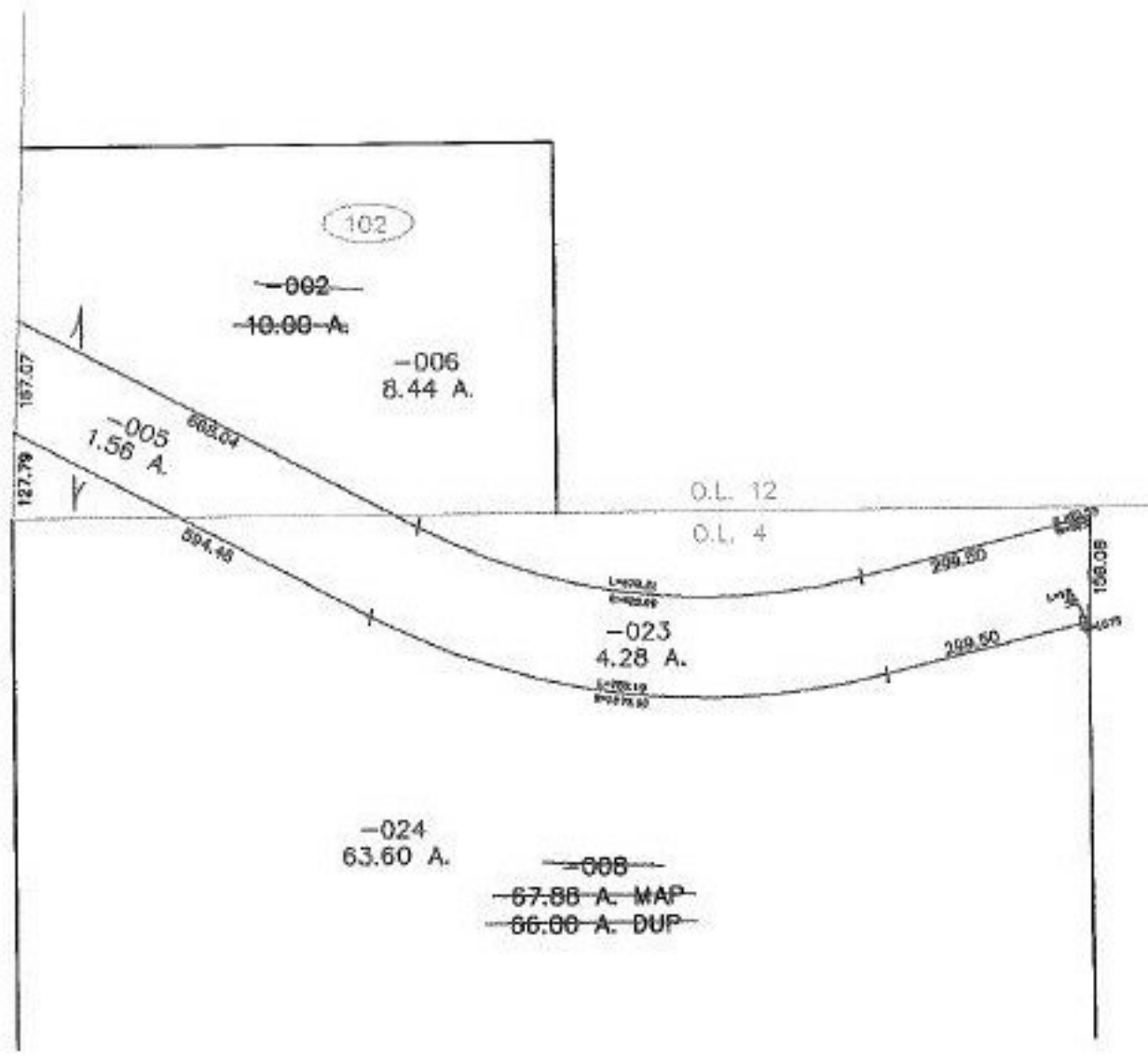


RASTER

PARENT PARCEL: 06-24-012-102-002, 06-24-004-000-008
CHILD PARCEL: 06-24-012-102-005, -006 06-24-004-000-023, -024
STARTING POINT: SOUTHWEST CORNER OF O.L. 12 & O.L. 4

NO. 01181



SPLITS/DEEDS PROCESSED
LORAIN COUNTY TAX MAP DEPARTMENT
226 MIDDLE AVE. ELYRIA, OHIO

SURVEYED BY: MARK A. YEAGER
CLOSURE: 0.00 : 10.000
MAP PAGE(S): 6-114
APPROVED BY: JAH DATE: 9-19-02
SCALE: 1" = 300' PRIOR INSTRUMENT: 970479529