

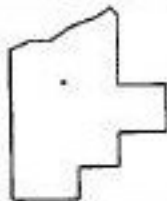
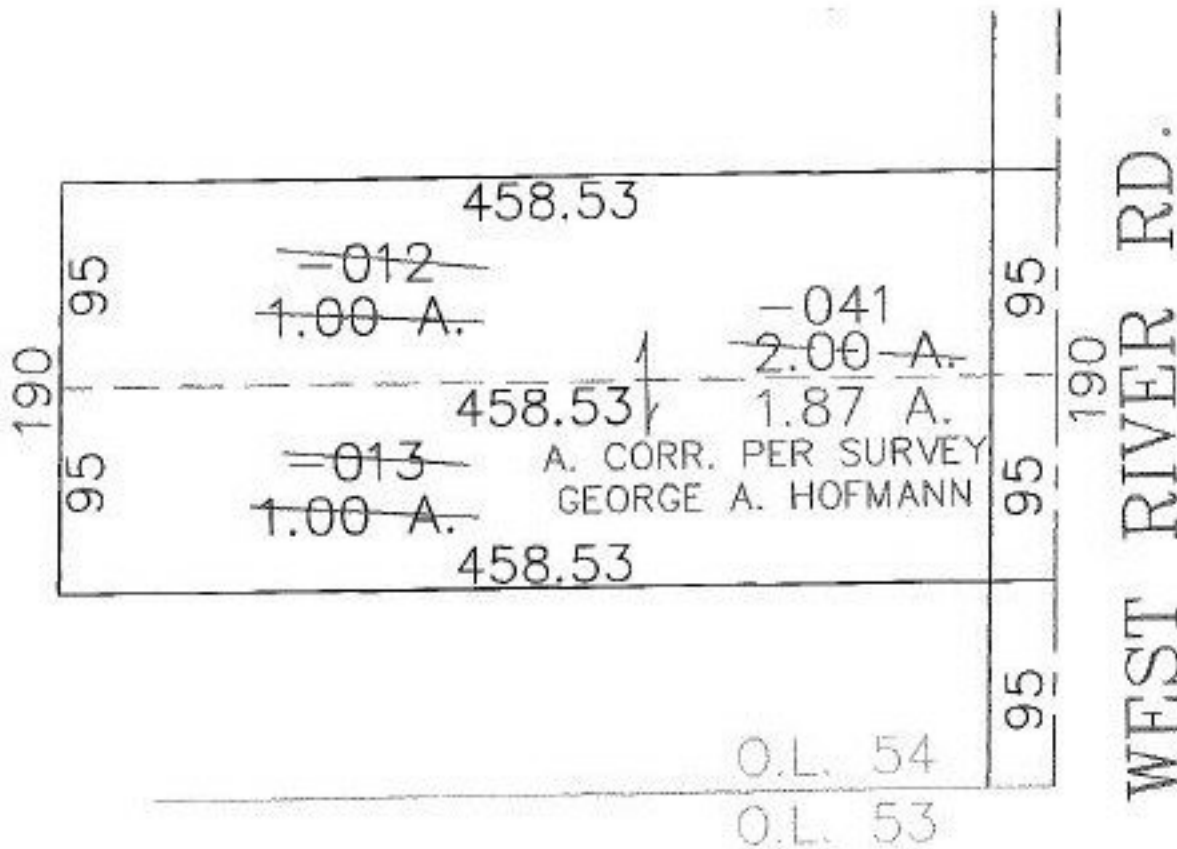
RASTER

NO. 01172

PARENT PARCEL: 12-00-054-000-012, -013

CHILD PARCEL: 12-00-054-000-041

STARTING POINT: CENTERLINE OF WEST RIVER RD. & O.L. 54



**SPLITS/DEEDS PROCESSED**

LORAIN COUNTY TAX MAP DEPARTMENT  
226 MIDDLE AVE. ELYRIA, OHIO

SURVEYED BY: GEORGE A. HOFMANN

CLOSURE: 0.00 : 10.000

MAP PAGE(S): 12-00-054-B

APPROVED BY: JAH DATE: 8-6-02

SCALE: 1" = 100 PRIOR INSTRUMENT: 2000069988