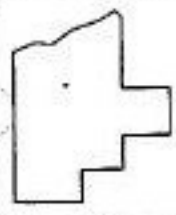
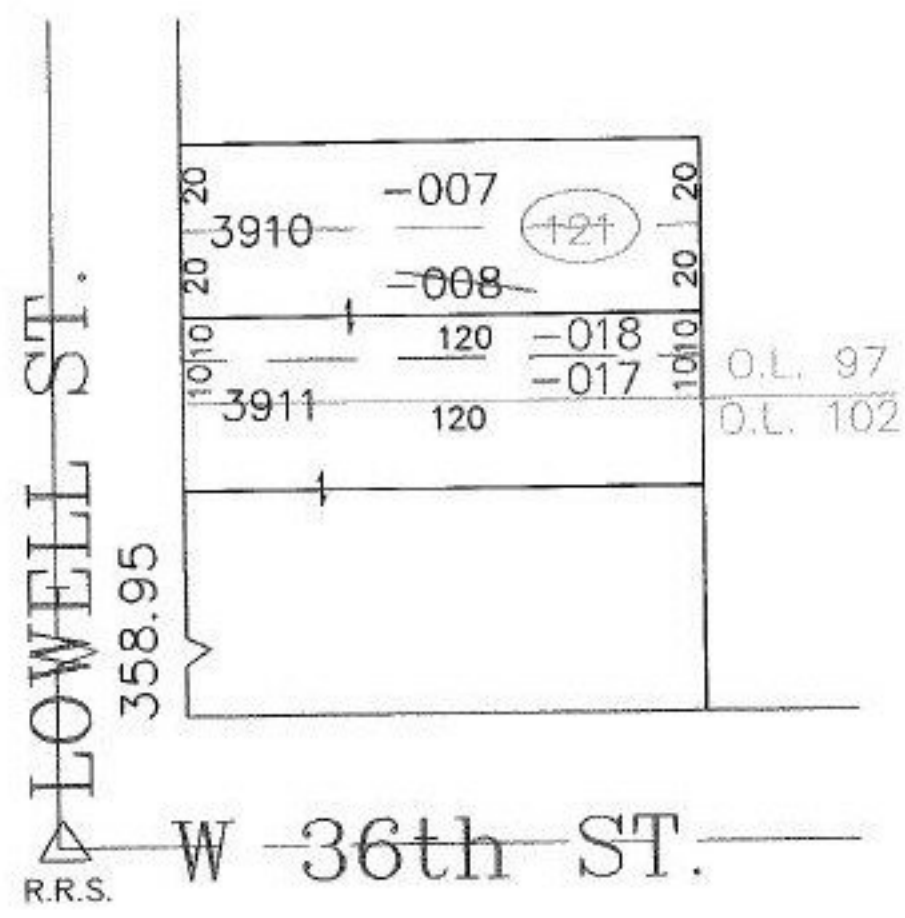
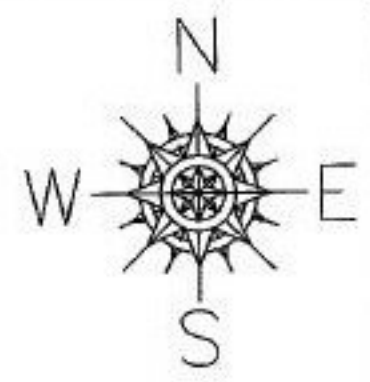


RASTER

PARENT PARCEL: 03-00-097-121-008
CHILD PARCEL: 03-00-097-121-017, -018
STARTING POINT: SIDELINE OF LOWELL ST. & W. 36th ST.

NO. 01171



SPLITS/DEEDS PROCESSED
LORAIN COUNTY TAX MAP DEPARTMENT
226 MIDDLE AVE. ELYRIA, OHIO

SURVEYED BY: DANE HAPONEK
CLOSURE: 0.00 : 10.000
MAP PAGE(S): 3-00-097-B
APPROVED BY: JAH DATE: 8-5-02
SCALE: 1" = 50' PRIOR INSTRUMENT: PL VOL 6 PG 13